



14 Jun 2023  
14 June 2023  
P.U. (A) 183

WARTA KERAJAAN PERSEKUTUAN

*FEDERAL GOVERNMENT  
GAZETTE*

PERINTAH HAD LAJU  
(LEBUH RAYA BERTINGKAT SUNGAI BESI-ULU KELANG)  
(PINDAAN) 2023

*SPEED LIMIT  
(SUNGAI BESI-ULU KELANG ELEVATED EXPRESSWAY)  
(AMENDMENT) ORDER 2023*

DISIARKAN OLEH/  
*PUBLISHED BY*  
JABATAN PEGUAM NEGARA/  
*ATTORNEY GENERAL'S CHAMBERS*

## AKTA PENGANGKUTAN JALAN 1987

PERINTAH HAD LAJU (LEBUH RAYA BERTINGKAT SUNGAI BESI-ULU KELANG)  
(PINDAAN) 2023

PADA menjalankan kuasa yang diberikan oleh subseksyen 69(2) Akta Pengangkutan Jalan 1987 [*Akta 333*], Menteri membuat perintah yang berikut:

**Nama dan permulaan kuat kuasa**

1. (1) Perintah ini bolehlah dinamakan **Perintah Had Laju (Lebuh Raya Bertingkat Sungai Besi-Ulu Kelang) (Pindaan) 2023**.

(2) Perintah ini mula berkuat kuasa pada 15 Jun 2023.

**Pindaan Jadual Pertama**

2. Perintah Had Laju (Lebuh Raya Bertingkat Sungai Besi-Ulu Kelang) 2022 [*P.U. (A) 293/2022*], yang disebut "Perintah ibu" dalam Perintah ini, dipinda dalam Jadual Pertama dengan memasukkan selepas butiran (*m*) butiran yang berikut:

(1) <i>Jalan</i>	(2) <i>Had Laju (km/j)</i>
( <i>n</i> ) Laluan utama di kilometer 0.000 di koordinat U -68308.891, T 20957.479, GDM2000 dan berakhir di kilometer 6.0 di koordinat U -66717.553, T 25387.755, GDM2000 bagi laluan arah Ulu Kelang.	80
( <i>o</i> ) Laluan utama di kilometer 6.0 di koordinat U -66717.553, T 25387.755, GDM2000 dan berakhir di kilometer 6.773 di koordinat U -67058.889, T 26072.028, GDM2000 bagi laluan arah Ulu Kelang.	60
( <i>p</i> ) Laluan utama di kilometer 6.773 di koordinat U -67058.889, T 26072.028, GDM2000 dan berakhir di kilometer 7.128 di koordinat U -66766.516, T 26937.495, GDM2000 bagi laluan arah Ulu Kelang.	80



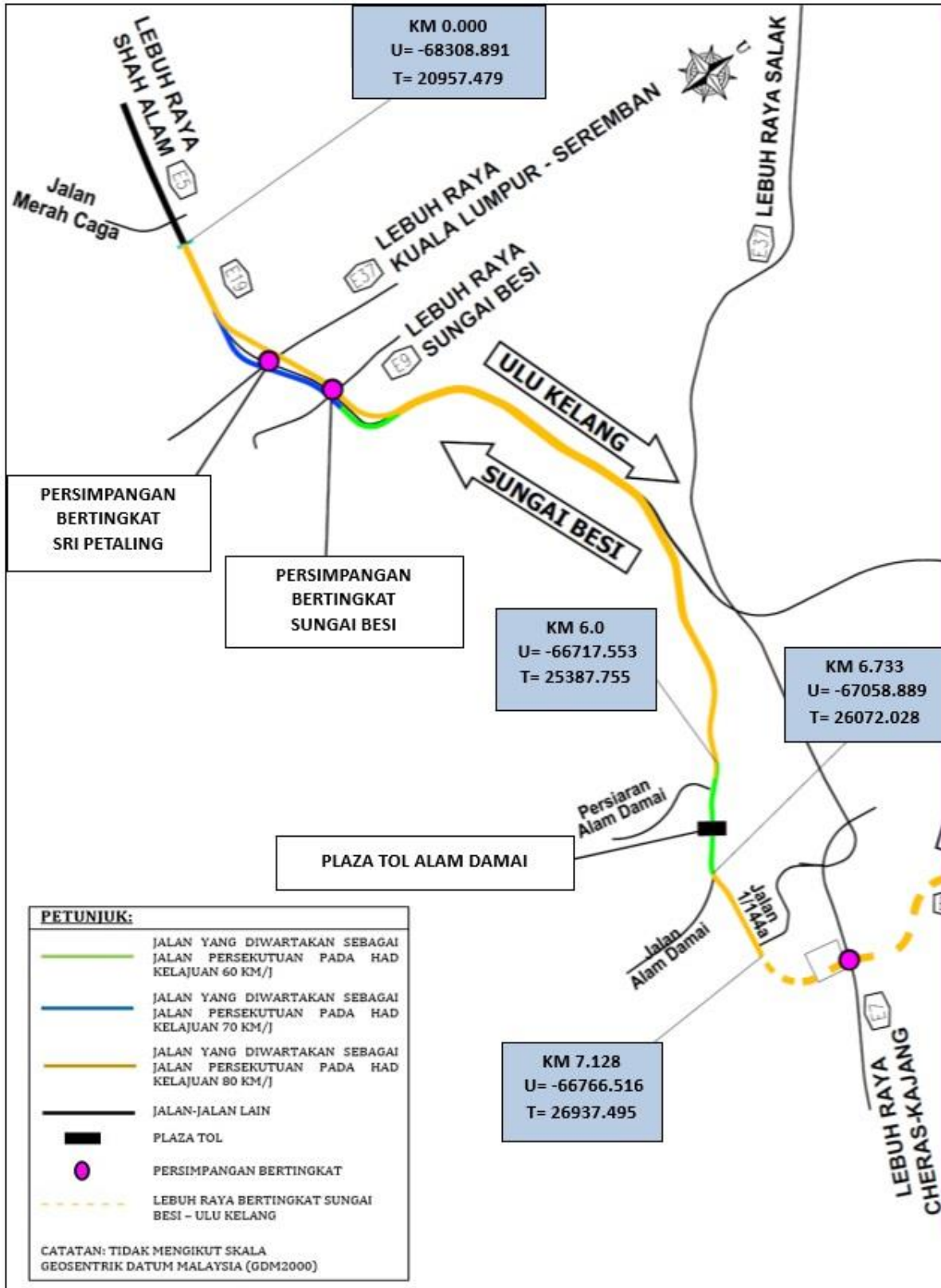
(1) <i>Jalan</i>	(2) <i>Had Laju (km/j)</i>
(iii) Had Sempadan Penyenggaraan di koordinat U -68197.045, T 21718.515, GDM2000 dan berakhir di Had Sempadan Penyenggaraan di koordinat U -43370.458, T 21923.201, GDM2000-MS30;	50
(iv) Had Sempadan Penyenggaraan di koordinat U -68095.477, T 21982.165, GDM2000 dan berakhir di koordinat U -57198.712, T 21026.183, GDM2000-MS40;	60
(v) Had Sempadan Penyenggaraan di koordinat U -68187.769, T 21880.79, GDM2000 dan berakhir di Had Sempadan Penyenggaraan di koordinat U -67589.525, T 21785.017, GDM2000-MS50; dan	50
(vi) Had Sempadan Penyenggaraan di koordinat U -68102.524, T 21992.173, GDM2000 dan berakhir di Had Sempadan Penyenggaraan di koordinat U -68497.073, T 21961.872, GDM2000-MS60.	60
(w) Persimpangan Bertingkat Sungai Besi dari—	
(i) Had Sempadan Penyenggaraan di koordinat U -67804.192, T 22329.446, GDM2000 dan berakhir di Had Sempadan Penyenggaraan di koordinat U -67598.717, T 22163.802, GDM2000-MB10;	60
(ii) Had Sempadan Penyenggaraan di koordinat U -67978.528, T 22270.387, GDM2000 dan berakhir di koordinat U -68208.329, T 22280.057, GDM2000-MB20; dan	50

(1) <i>Jalan</i>	(2) <i>Had Laju (km/j)</i>
(iii) Had Sempadan Penyenggaraan di koordinat U -67910.186, T 22288.66, GDM2000 dan berakhir di Had Sempadan Penyenggaraan di koordinat U -68149.438, T 22240.299, GDM2000-MB30.	40".

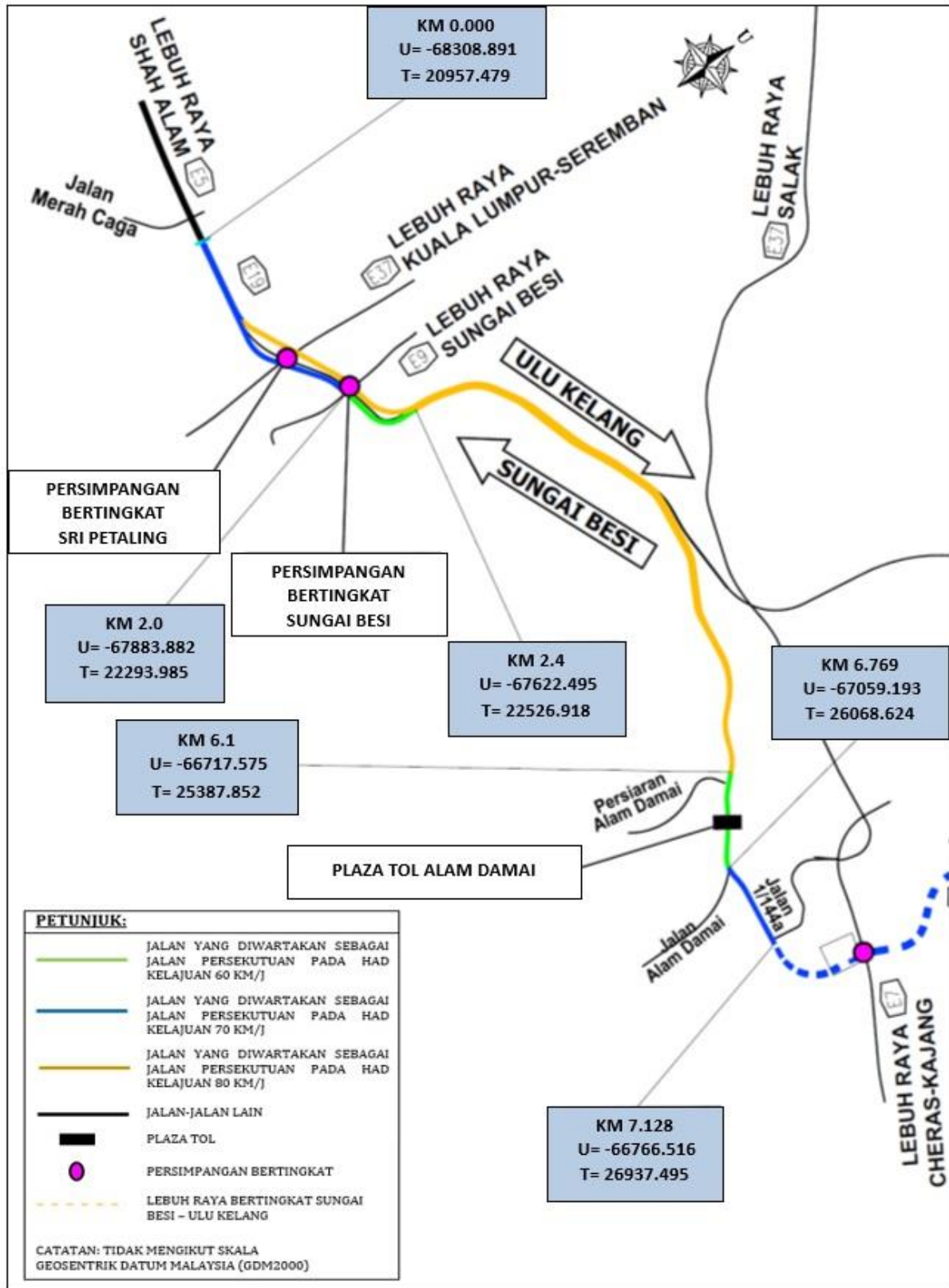
### **Pindaan Jadual Kedua**

3. Jadual Kedua kepada Perintah ibu dipinda dengan memasukkan selepas PETA 13 - PERSIMPANGAN BERTINGKAT BUKIT ANTARABANGSA peta yang berikut:

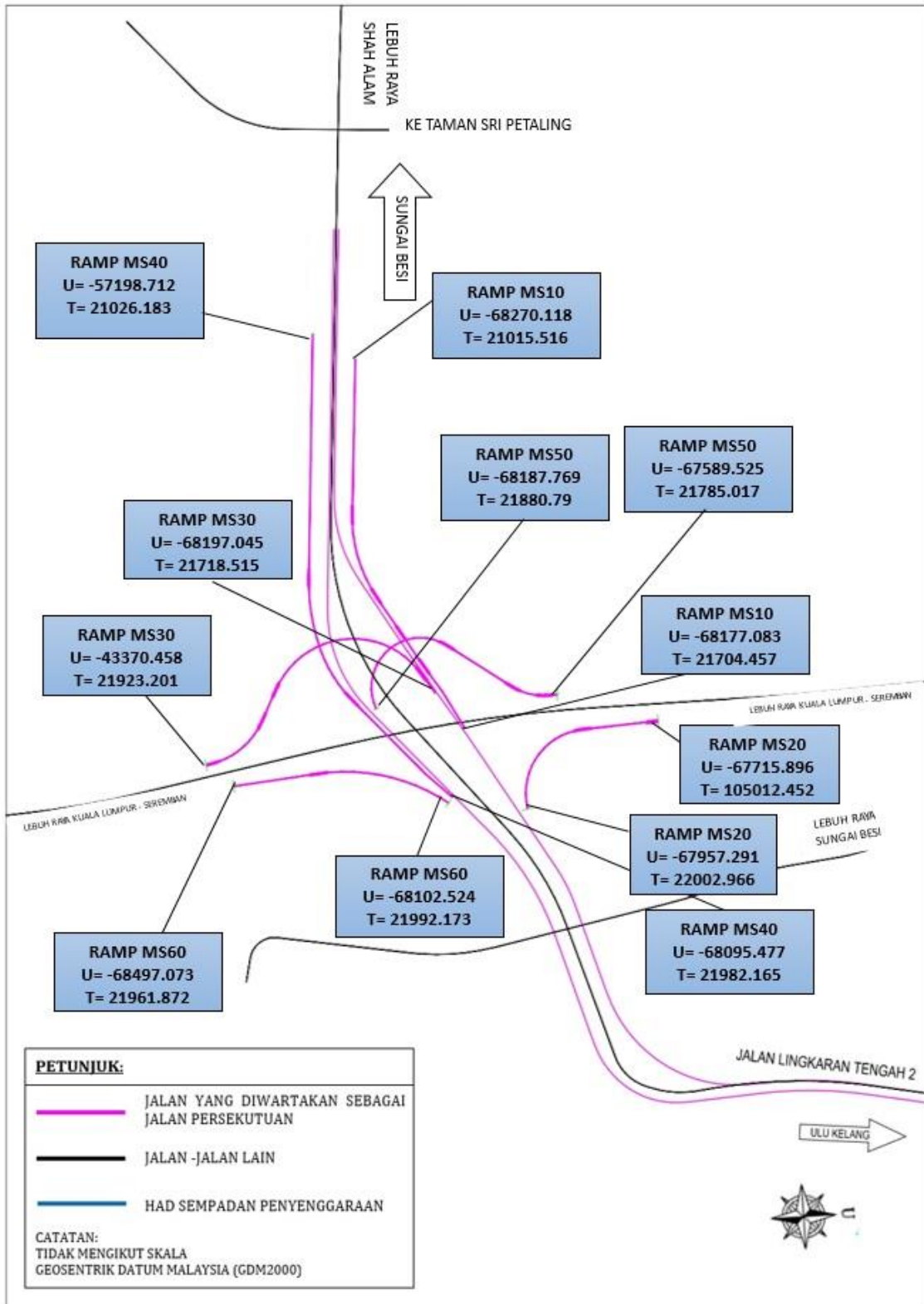
“PETA 14 - LALUAN UTAMA PERSIMPANGAN BERTINGKAT SUNGAI BESI-ULU KELANG  
(ARAH ULU KELANG)



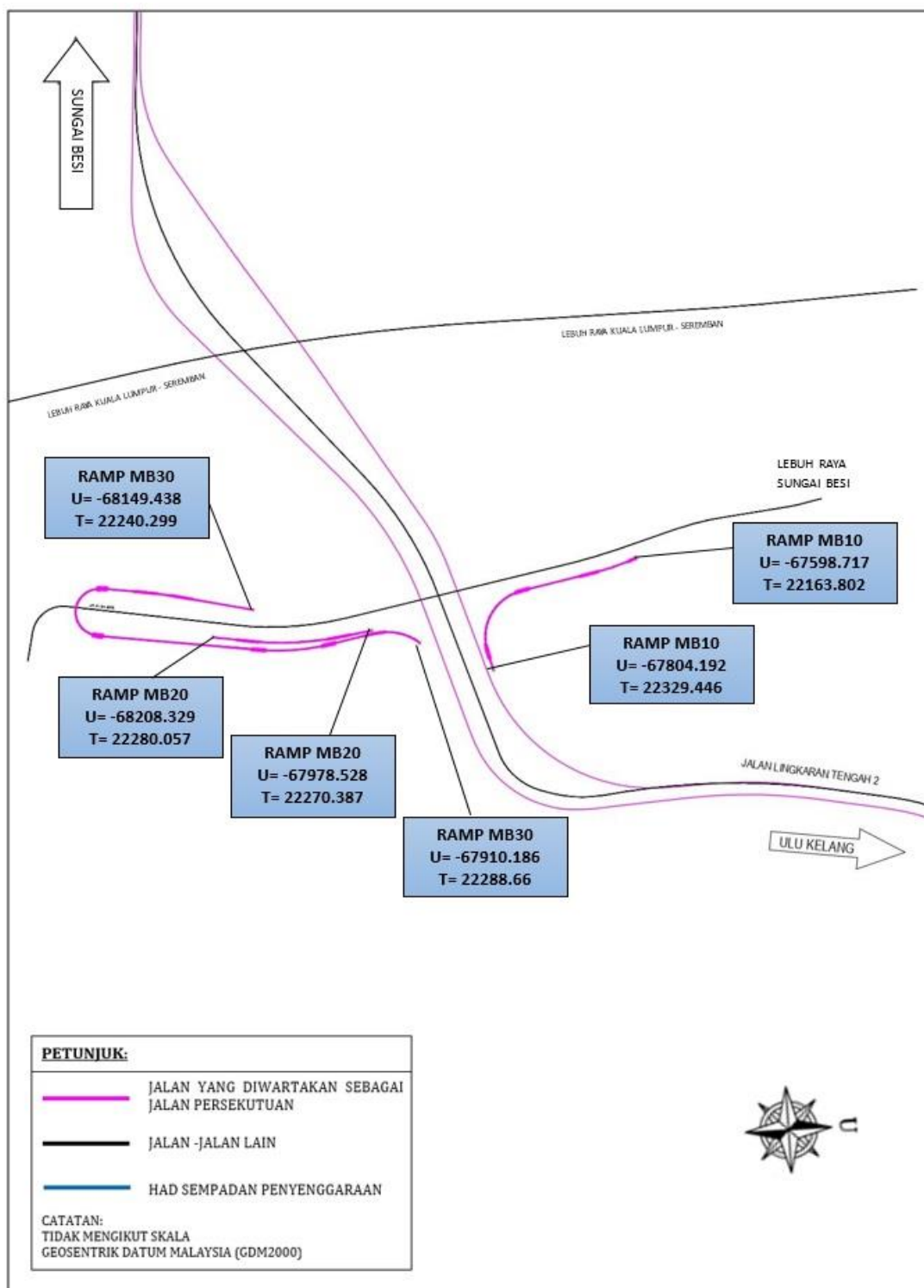
PETA 15 - LALUAN UTAMA PERSIMPANGAN BERTINGKAT SUNGAI BESI-ULU KELANG  
(ARAH SUNGAI BESI)



PETA 16 - PERSIMPANGAN BERTINGKAT SRI PETALING



PETA 17 - PERSIMPANGAN BERTINGKAT SUNGAI BESI



Dibuat 13 Jun 2023  
[KKR.100-1/2/24; PN(PU2)460/Jld. 125]

DATO SRI ALEXANDER NANTA LINGGI  
*Menteri Kerja Raya*

## ROAD TRANSPORT ACT 1987

SPEED LIMIT (SUNGAI BESI-ULU KELANG ELEVATED EXPRESSWAY) (AMENDMENT)  
ORDER 2023

IN exercise of the powers conferred by subsection 69(2) of the Road Transport Act 1987 [Act 333], the Minister makes the following order:

**Citation and commencement**

1. (1) This order may be cited as the **Speed Limit (Sungai Besi-Ulu Kelang Elevated Expressway) (Amendment) Order 2023**.

(2) This Order comes into operation on 15 June 2023.

**Amendment of First Schedule**

2. The Speed Limit (Sungai Besi-Ulu Kelang Elevated Expressway) Order 2022 [P.U. (A) 293/2022], which is referred to as the “principal Order” in this Order, is amended in the First Schedule by inserting after item (m) the following items:

(1) <i>Road</i>	(2) <i>Speed Limit (km/h)</i>
(n) The main route at kilometre 0.000 at coordinates N -68308.891, E 20957.479, GDM2000 and ending at kilometre 6.0 at coordinates N -66717.553, E 25387.755, GDM2000 for Ulu Kelang bound.	80
(o) The main route at kilometre 6.0 at coordinates N -66717.553, E 25387.755, GDM2000 and ending at kilometre 6.773 at coordinates N -67058.889, E 26072.028, GDM2000 for Ulu Kelang bound.	60
(p) The main route at kilometre 6.773 at coordinates N -67058.889, E 26072.028, GDM2000 and ending at kilometre 7.128 at coordinates N -66766.516, E 26937.495, GDM2000 for Ulu Kelang bound.	80



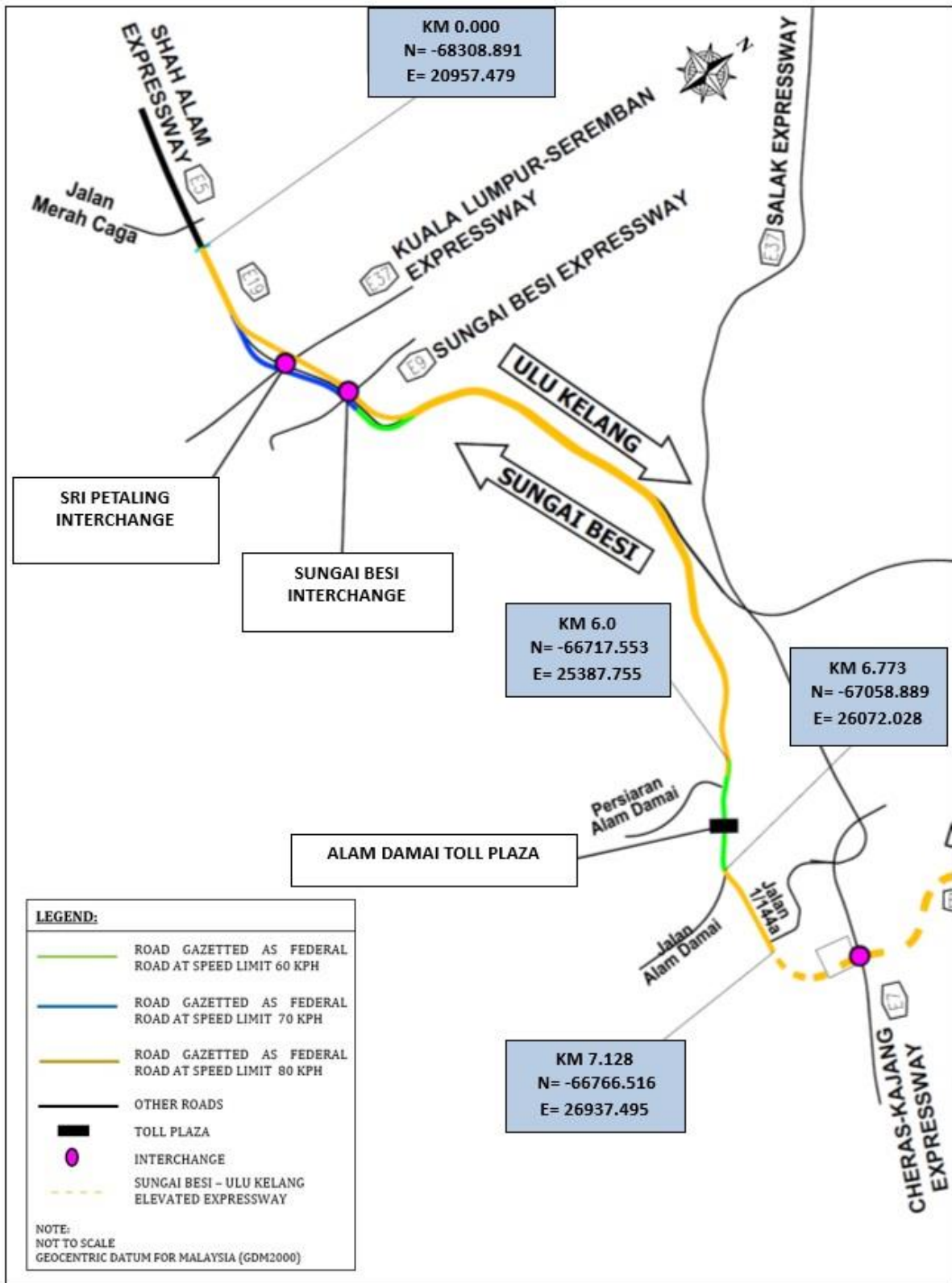
(1) <i>Road</i>	(2) <i>Speed Limit (km/h)</i>
(iii) Limit of Maintenance Responsibility at coordinates N -68197.045, E 21718.515, GDM2000 and ending at Limit of Maintenance Responsibility at coordinates N -43370.458, E 21923.201, GDM2000-MS30;	50
(iv) Limit of Maintenance Responsibility at coordinates N -68095.477, E 21982.165, GDM2000 and ending at coordinates N -57198.712, E 21026.183, GDM2000-MS40;	60
(v) Limit of Maintenance Responsibility at coordinates N -68187.769, E 21880.79, GDM2000 and ending at Limit of Maintenance Responsibility at coordinates N -67589.525, E 21785.017, GDM2000-MS50; and	50
(vi) Limit of Maintenance Responsibility at coordinates N -68102.524, E 21992.173, GDM2000 and ending at Limit of Maintenance Responsibility at coordinates N -68497.073, E 21961.872, GDM2000-MS60.	60
(w) Sungai Besi Interchange from—	
(i) Limit of Maintenance Responsibility at coordinates N -67804.192, E 22329.446, GDM2000 and ending at Limit of Maintenance Responsibility at coordinates N -67598.717, E 22163.802, GDM2000-MB10;	60
(ii) Limit of Maintenance Responsibility at coordinates N -67978.528, E 22270.387, GDM2000 and ending at coordinates N -68208.329, E 22280.057, GDM2000-MB20; and	50

(1) <i>Road</i>	(2) <i>Speed Limit (km/h)</i>
(iii) Limit of Maintenance Responsibility at coordinates N -67910.186, E 22288.66, GDM2000 and ending at Limit of Maintenance Responsibility at coordinates N -68149.438, E 22240.299, GDM2000-MB30.	40".

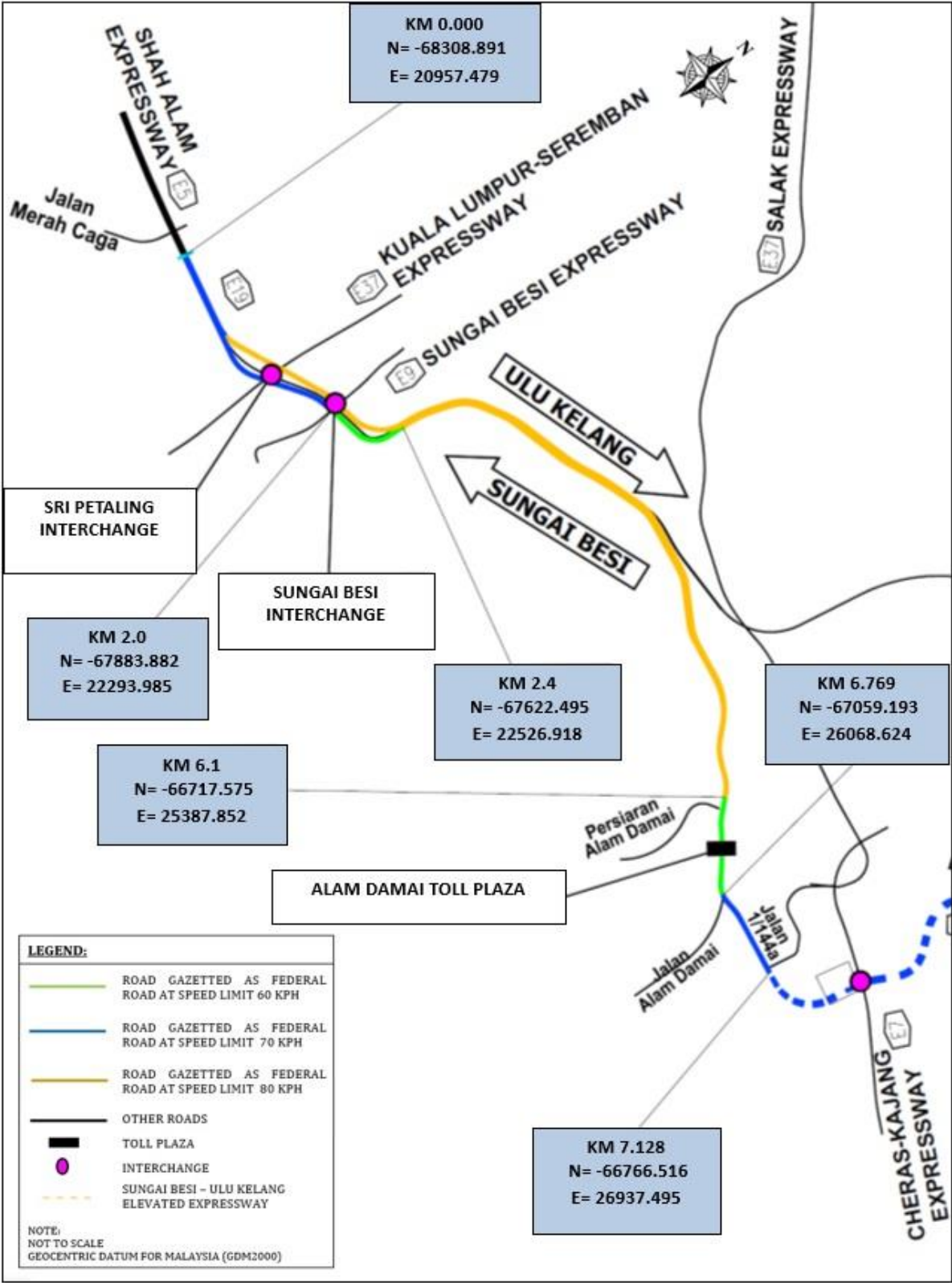
### **Amendment of Second Schedule**

3. The Second Schedule to the principal Order is amended by inserting after MAP 13 - BUKIT ANTARABANGSA INTERCHANGE the following maps:

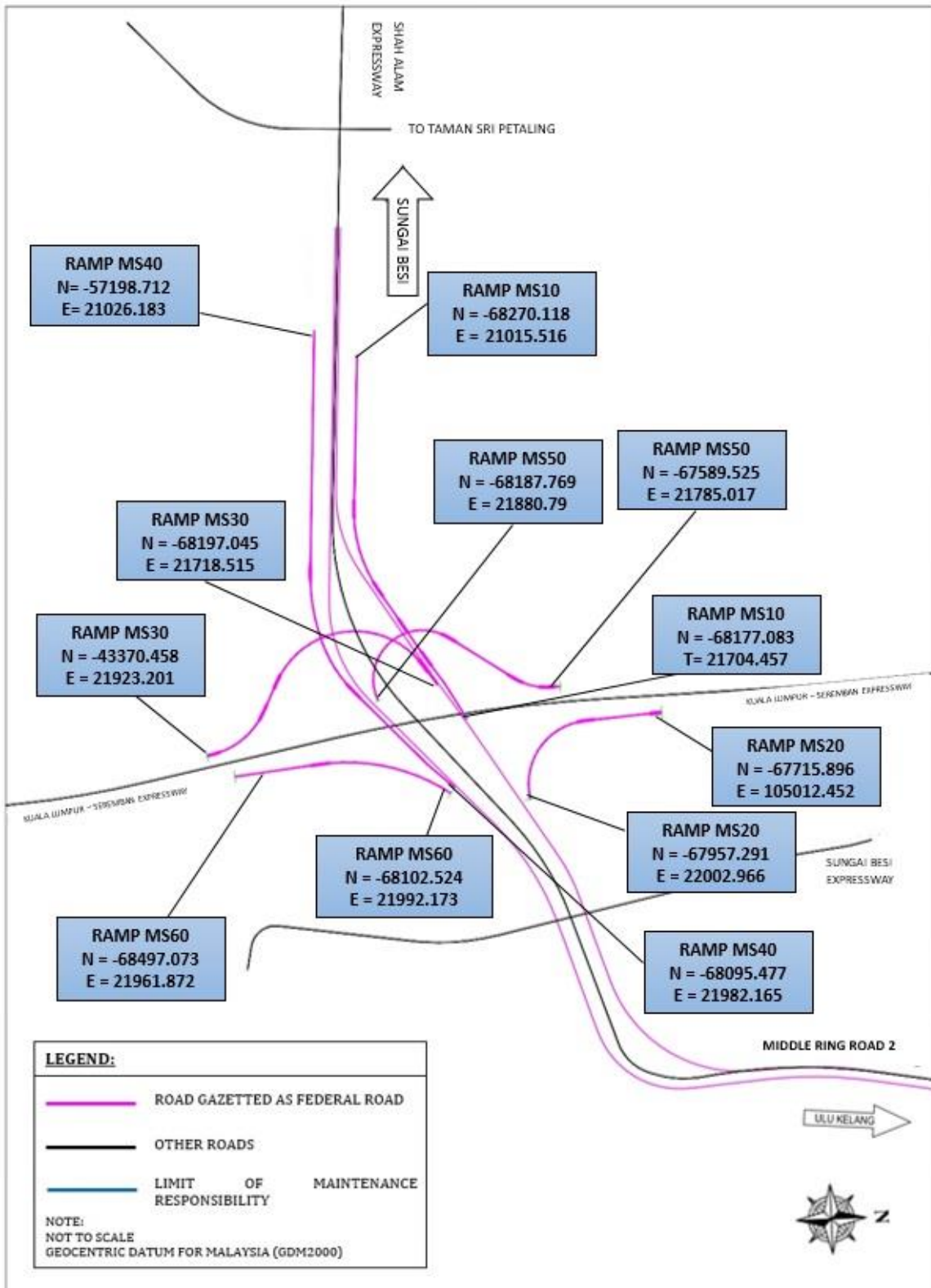
“MAP 14 - MAIN ROUTE SUNGAI BESI-ULU KELANG EXPRESSWAY  
(ULU KELANG BOUND)



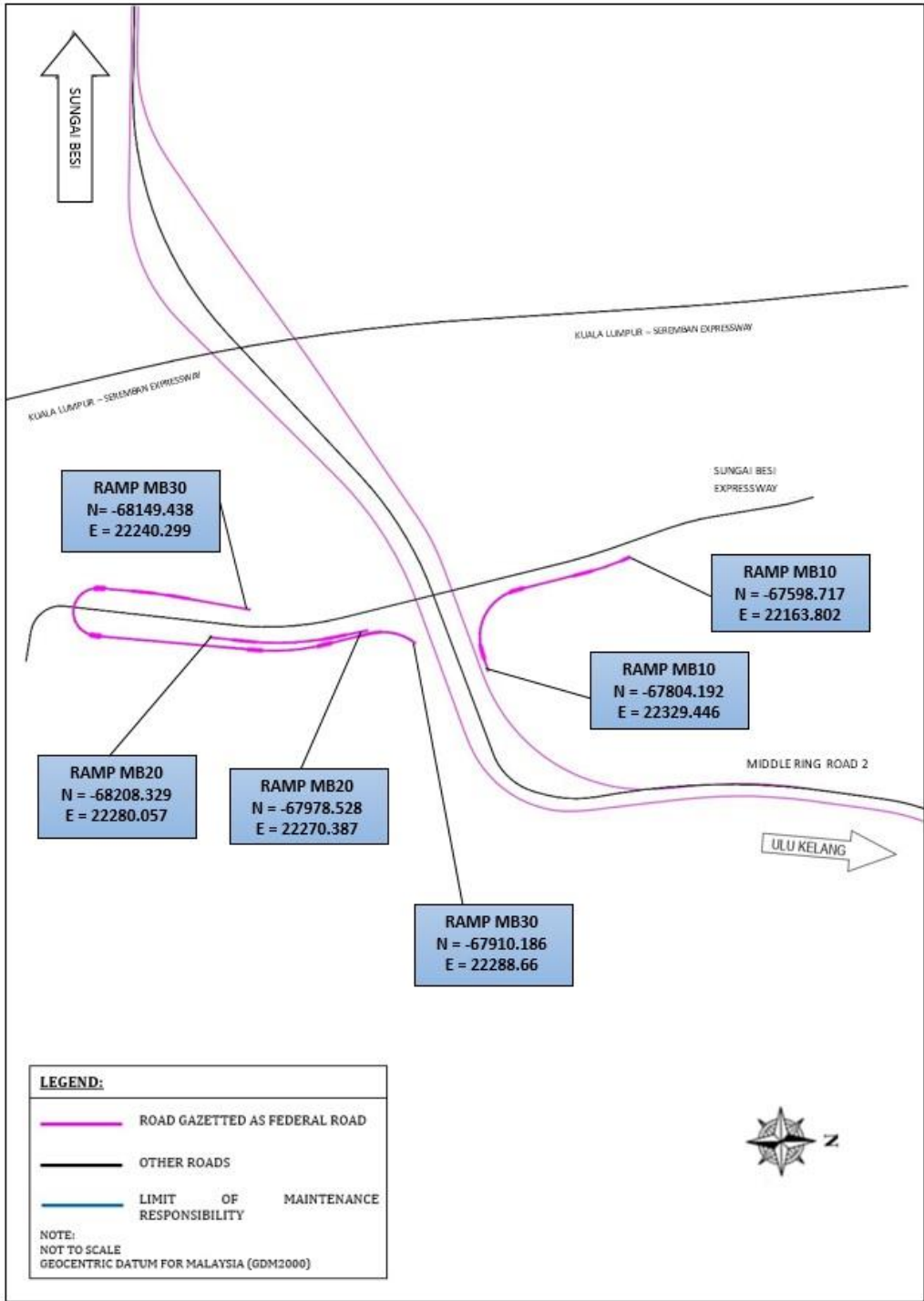
MAP 15 - MAIN ROUTE SUNGAI BESI-ULU KELANG EXPRESSWAY  
(SUNGAI BESI BOUND)



MAP 16 - SRI PETALING INTERCHANGE



MAP 17 - SUNGAI BESI INTERCHANGE



Made 13 June 2023  
[KKR.100-1/2/24; PN(PU2)460/Jld. 125]

DATO SRI ALEXANDER NANTA LINGGI  
*Minister of Works*