



2 November 2023  
2 November 2023  
P.U. (A) 335

WARTA KERAJAAN PERSEKUTUAN

*FEDERAL GOVERNMENT  
GAZETTE*

PERINTAH HAD LAJU  
(LEBUH RAYA SETIAWANGSA-PANTAI)  
(PINDAAN) 2023

*SPEED LIMIT  
(SETIAWANGSA-PANTAI EXPRESSWAY)  
(AMENDMENT) ORDER 2023*

DISIARKAN OLEH/  
PUBLISHED BY  
JABATAN PEGUAM NEGARA/  
ATTORNEY GENERAL'S CHAMBERS

AKTA PENGANGKUTAN JALAN 1987

PERINTAH HAD LAJU (LEBUH RAYA SETIAWANGSA-PANTAI) (PINDAAN) 2023

PADA menjalankan kuasa yang diberikan oleh subseksyen 69(2) Akta Pengangkutan Jalan 1987 [*Akta 333*], Menteri membuat perintah yang berikut:

**Nama dan permulaan kuat kuasa**

1. (1) Perintah ini bolehlah dinamakan **Perintah Had Laju (Lebuh Raya Setiawangsa-Pantai) (Pindaan) 2023**.

(2) Perintah ini mula berkuat kuasa pada 3 November 2023.

**Pindaan perenggan 2**

2. Perintah Had Laju (Lebuh Raya Setiawangsa-Pantai) 2021 [*P.U. (A) 456/2021*], yang disebut “Perintah ibu” dalam Perintah ini, dipinda dengan menggantikan subperenggan 2(2) dengan subperenggan yang berikut:

“(2) Jalan dengan had laju yang dinyatakan dalam subperenggan (1) ditunjukkan dalam peta dalam Jadual Kedua.”.

**Pindaan Jadual Pertama**

3. Perintah ibu dipinda dalam Jadual Pertama—

(a) dalam subbutiran (e)(i), dengan memotong perkataan “dan”;

(b) dalam butiran (f), dengan menggantikan noktah di hujung butiran itu dengan koma bernoktah; dan

(c) dengan memasukkan selepas butiran (f) butiran yang berikut:

	(1) Jalan	(2) Had Laju (km/j)
<i>(g)</i>	Laluan utama di kilometer -0.031 di koordinat U 345048.296, T 407457.781 Grid RSO GDM2000 dan berakhir di kilometer 0.850 di koordinat U 344686.970, T 407936.190 Grid RSO GDM2000 arah utara;	40
<i>(h)</i>	Laluan utama di kilometer 0.850 di koordinat U 344686.970, T 407936.190 Grid RSO GDM2000 dan berakhir di kilometer 2.650 di koordinat U 344459.717, T 409658.270 Grid RSO GDM2000 arah utara;	60
<i>(i)</i>	Laluan utama di kilometer 1.550 di koordinat U 344662.631, T 408638.490 Grid RSO GDM2000 dan berakhir di kilometer 2.650 di koordinat U 344459.717, T 409658.270 Grid RSO GDM2000 arah selatan;	60
<i>(j)</i>	Laluan utama di kilometer 2.650 di koordinat U 344459.717, T 409658.270 Grid RSO GDM2000 dan berakhir di kilometer 4.120 di koordinat U 343683.386, T 410812.215 Grid RSO GDM2000 arah utara dan selatan;	80
<i>(k)</i>	Laluan utama di kilometer 4.120 di koordinat U 343683.386, T 410812.215 Grid RSO GDM2000 dan berakhir di kilometer 4.950 di koordinat U 343581.242, T 411351.868 Grid RSO GDM2000 arah utara dan selatan;	60
<i>(l)</i>	Persimpangan Bertingkat Kerinchi dari RAMP 1A dan 1B di koordinat U 344662.631, T 408638.490 Grid RSO GDM2000 dan berakhir di Had Sempadan Penyenggaraan di koordinat U 344701.475, T 408061.556 Grid RSO GDM2000;	40

	(1) Jalan	(2) Had Laju (km/j)
<i>(m)</i>	Tanjakan Masuk dan Keluar di Jalan Kelang Lama dari—	
	(i) RAMP 1 JKL/A di koordinat U 344430.615, T 409785.635 Grid RSO GDM2000 dan berakhir di Had Sempadan Penyenggaraan di koordinat U 344483.130, T 409524.368 Grid RSO GDM2000; dan	50
	(ii) RAMP 1 JKL/B dari Had Sempadan Penyenggaraan di koordinat U 344437.394, T 410026.641 Grid RSO GDM2000 dan berakhir di koordinat U 344265.786, T 410317.682 Grid RSO GDM2000;	50
<i>(n)</i>	Persimpangan Bertingkat Salak dari—	
	(i) RAMP 2A dari Had Sempadan Penyenggaraan di koordinat U 342944.439, T 411030.996 Grid RSO GDM2000 dan berakhir di koordinat U 343426.377, T 411229.932 Grid RSO GDM2000;	50
	(ii) RAMP 2D di koordinat U 343312.355, T 411266.691 Grid RSO GDM2000 dan berakhir di Had Sempadan Penyenggaraan di koordinat U 343202.052, T 411343.713 Grid RSO GDM2000;	50
	(iii) RAMP 2E dari Had Sempadan Penyenggaraan di koordinat U 343179.702, T 410981.380 Grid RSO GDM2000 dan berakhir di koordinat U 343213.478, T 411109.237 Grid RSO GDM2000; dan	40
	(iv) RAMP 2F di koordinat U 343436.140, T 411283.210 Grid RSO GDM2000 dan berakhir di Had Sempadan Penyenggaraan di koordinat U 342959.687, T 411085.200 Grid RSO GDM2000;	50

	(1) Jalan	(2) Had Laju (km/j)
(o)	Laluan utama di kilometer 5.000 di koordinat U 343581.242, T 411351.868 Grid RSO GDM2000 dan berakhir di kilometer 5.181 di koordinat U 343785.262, T 411496.316 Grid RSO GDM2000 arah utara dan selatan;	60
(p)	Laluan utama di kilometer 5.181 di koordinat U 343785.262, T 411496.316 Grid RSO GDM2000 dan berakhir di kilometer 6.801 di koordinat U 345143.643, T 412377.730 Grid RSO GDM2000 arah utara dan selatan;	80
(q)	Laluan utama di kilometer 6.801 di koordinat U 345143.643, T 412377.730 Grid RSO GDM2000 dan berakhir di kilometer 9.493 di koordinat U 347188.083, T 413925.687 Grid RSO GDM2000 arah utara dan selatan;	60
(r)	Laluan utama di kilometer 9.493 di koordinat U 347188.083, T 413925.687 Grid RSO GDM2000 dan berakhir di kilometer 9.842 di koordinat U 347227.596, T 414236.669 Grid RSO GDM2000 arah utara dan selatan;	50
(s)	Persimpangan Bertingkat Pandan dari—	
	(i) RAMP 3A—	
	(A) di koordinat U 347078.753, T 413819.955 Grid RSO GDM2000 dan berakhir di koordinat U 347242.318, T 413969.610 Grid RSO GDM2000;	50
	(B) di koordinat U 347242.318, T 413969.610 Grid RSO GDM2000 dan berakhir di koordinat U 347315.214, T 413949.057 Grid RSO GDM2000; dan	30

(1) Jalan	(2) Had Laju (km/j)
(C) di koordinat U 347315.214, T 413949.057 Grid RSO GDM2000 dan berakhir di koordinat U 347373.216, T 413756.361 Grid RSO GDM2000;	50
(ii) RAMP 3B dari Had Sempadan Penyenggaraan di koordinat U 347257.626, T 413838.546 Grid RSO GDM2000 dan berakhir di koordinat U 347079.729, T 413818.828 Grid RSO GDM2000;	50
(iii) RAMP 3C—	
(A) dari Had Sempadan Penyenggaraan di koordinat U 347264.157, T 413844.776 Grid RSO GDM2000 dan berakhir di koordinat U 347223.900, T 413945.359 Grid RSO GDM2000; dan	30
(B) di koordinat U 347223.900, T 413945.359 Grid RSO GDM2000 dan berakhir di koordinat U 347245.632, T 414241.377 Grid RSO GDM2000; dan	50
(iv) RAMP 3D di koordinat U 347247.085, T 414241.756 Grid RSO GDM2000 dan berakhir di koordinat U 347348.313, T 413844.202 Grid RSO GDM2000;	50
(t) Laluan utama dua tingkat arah utara di kilometer 9.893 di koordinat U 347227.597, T 414236.670 Grid RSO GDM2000 dan berakhir di kilometer 11.200 di koordinat U 347991.972, T 415064.762 Grid RSO GDM2000;	50
(u) Laluan utama dua tingkat arah utara di kilometer 11.200 di koordinat 347991.972, T 415064.762 Grid RSO GDM2000 dan berakhir di kilometer 12.135 di koordinat U 348404.120, T 415522.088 Grid RSO GDM2000 arah utara dan selatan;	60

(1) Jalan	(2) Had Laju (km/j)
(v) Laluan utama dua tingkat arah selatan di kilometer 9.897 di koordinat U 347237.756, T 414239.323 Grid RSO GDM2000 dan berakhir di kilometer 11.200 di koordinat U 347979.457, T 415057.932 Grid RSO GDM2000;	50
(w) Laluan utama dua tingkat arah selatan di kilometer 11.200 di koordinat U 347979.457, T 415057.932 Grid RSO GDM2000 dan berakhir di kilometer 12.135 di koordinat U 348404.120, T 415522.088 Grid RSO GDM2000;	60
(x) Laluan utama di kilometer 12.135 di koordinat U 348404.120, T 415522.088 Grid RSO GDM2000 dan berakhir di kilometer 14.994 di koordinat U 351413.020, T 415474.962 Grid RSO GDM2000 arah utara dan selatan;	80
(y) Persimpangan Bertingkat Ampang dari—	
(i) RAMP 4A—	
(A) di koordinat U 350228.389, T 415328.818 Grid RSO GDM2000 dan berakhir di koordinat U 350369.025, T 415412.622 Grid RSO GDM2000; dan	30
(B) di koordinat U 350369.025, T 415412.622 Grid RSO GDM2000 dan berakhir di koordinat U 350485.740, T 415413.917 Grid RSO GDM2000;	50
(ii) RAMP 4B—	
(A) dari Had Sempadan Penyenggaraan di koordinat U 350242.026, T 415029.288 Grid RSO GDM2000 dan berakhir di koordinat U 350236.282, T 415416.281 Grid RSO GDM2000;	50

(1) Jalan	(2) Had Laju (km/j)
(B) di koordinat U 350236.282, T 415416.281 Grid RSO GDM2000 dan berakhir di koordinat U 350005.908, T 415556.947, Grid RSO GDM2000; dan	40
(C) di koordinat U 350005.908, T 415556.947 Grid RSO GDM2000 dan berakhir di koordinat U 349899.152, T 415484.426, Grid RSO GDM2000;	30
(iii) RAMP 4C—	
(A) di koordinat U 350307.358, T 415440.550 Grid RSO GDM2000 dan berakhir di koordinat U 350107.377, T 415439.226 Grid RSO GDM2000;	50
(B) di koordinat U 350107.377, T 415439.226 Grid RSO GDM2000 dan berakhir di koordinat U 349982.225, T 415533.449 Grid RSO GDM2000; dan	30
(C) di koordinat U 349982.225, T 415533.449 Grid RSO GDM2000 dan berakhir di Had Sempadan Penyenggaraan di koordinat U 350238.339, T 415613.712 Grid RSO GDM2000;	40
(iv) RAMP 4D—	
(A) di koordinat U 349945.698, T 415439.805 Grid RSO GDM2000 dan berakhir di koordinat U 349822.743, T 415420.760 Grid RSO GDM2000;	50
(B) di koordinat U 349822.743, T 415420.760 Grid RSO GDM2000 dan berakhir di koordinat U 350171.934, T 415225.002 Grid RSO GDM2000; dan	30

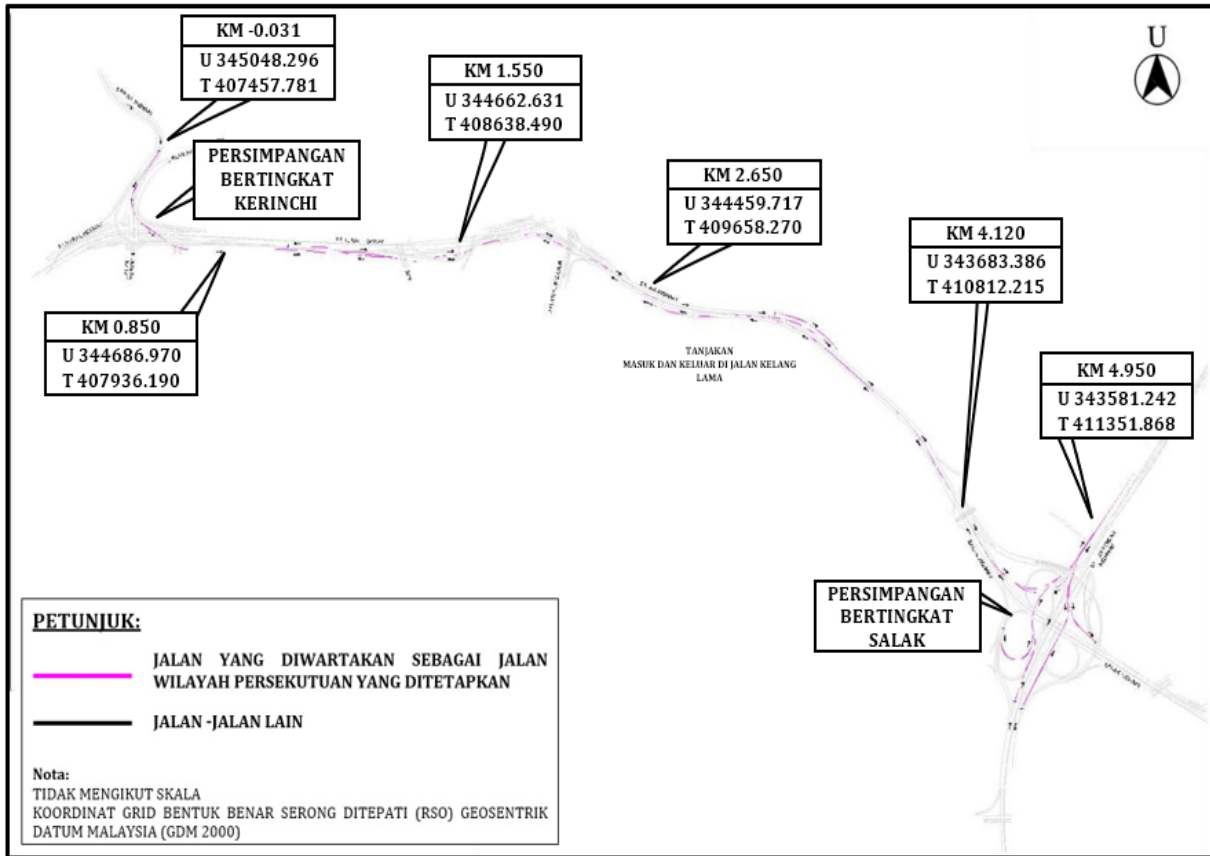
(1) Jalan	(2) Had Laju (km/j)
(C) di koordinat U 350171.934, T 415225.002 Grid RSO GDM2000 dan berakhir di Had Sempadan Penyenggaraan di koordinat U 350207.492, T 414990.056 Grid RSO GDM2000;	50
(z) Laluan utama di kilometer 15.000 di koordinat U 351413.020, T 415474.962 Grid RSO GDM2000 dan berakhir di kilometer 15.620 di koordinat U 351968.011, T 415748.972 Grid RSO GDM2000 arah utara dan selatan;	80
(aa) Laluan utama di kilometer 15.620 di koordinat U 351968.011, T 415748.972 Grid RSO GDM2000 dan berakhir di kilometer 16.400 di koordinat U 352706.498, T 415985.744 Grid RSO GDM2000 arah utara dan selatan; dan	60
(bb) Persimpangan Bertingkat Setiawangsa dari—	
(i) Ramp 5A—	
(A) dari Had Sempadan Penyenggaraan di koordinat U 352066.115, T 415763.573 Grid RSO GDM2000 dan di koordinat U 351716.678, T 415616.390 Grid RSO GDM2000 dan berakhir di koordinat U 352259.493, T 415813.054 Grid RSO GDM2000;	40
(B) di koordinat U 352259.493, T 415813.054 Grid RSO GDM2000 dan berakhir di koordinat U 352373.605, T 415731.046 Grid RSO GDM2000; dan	30
(C) di koordinat U 352373.605, T 415731.046 Grid RSO GDM2000 dan berakhir di Had Sempadan Penyenggaraan di koordinat U 352392.427, T 415674.092 Grid RSO GDM2000;	40

(1) Jalan	(2) Had Laju (km/j)
(ii) Ramp 5E dari Had Sempadan Penyenggaraan di koordinat U 352307.408, T 416107.863 Grid RSO GDM2000 dan berakhir di koordinat U 352225.452, T 415862.971 Grid RSO GDM2000; dan	40
(iii) Ramp 5G di koordinat U 352541.346, T 415493.874 Grid RSO GDM2000 dan berakhir di koordinat U 351887.877, T 415732.835 Grid RSO GDM2000.	40".

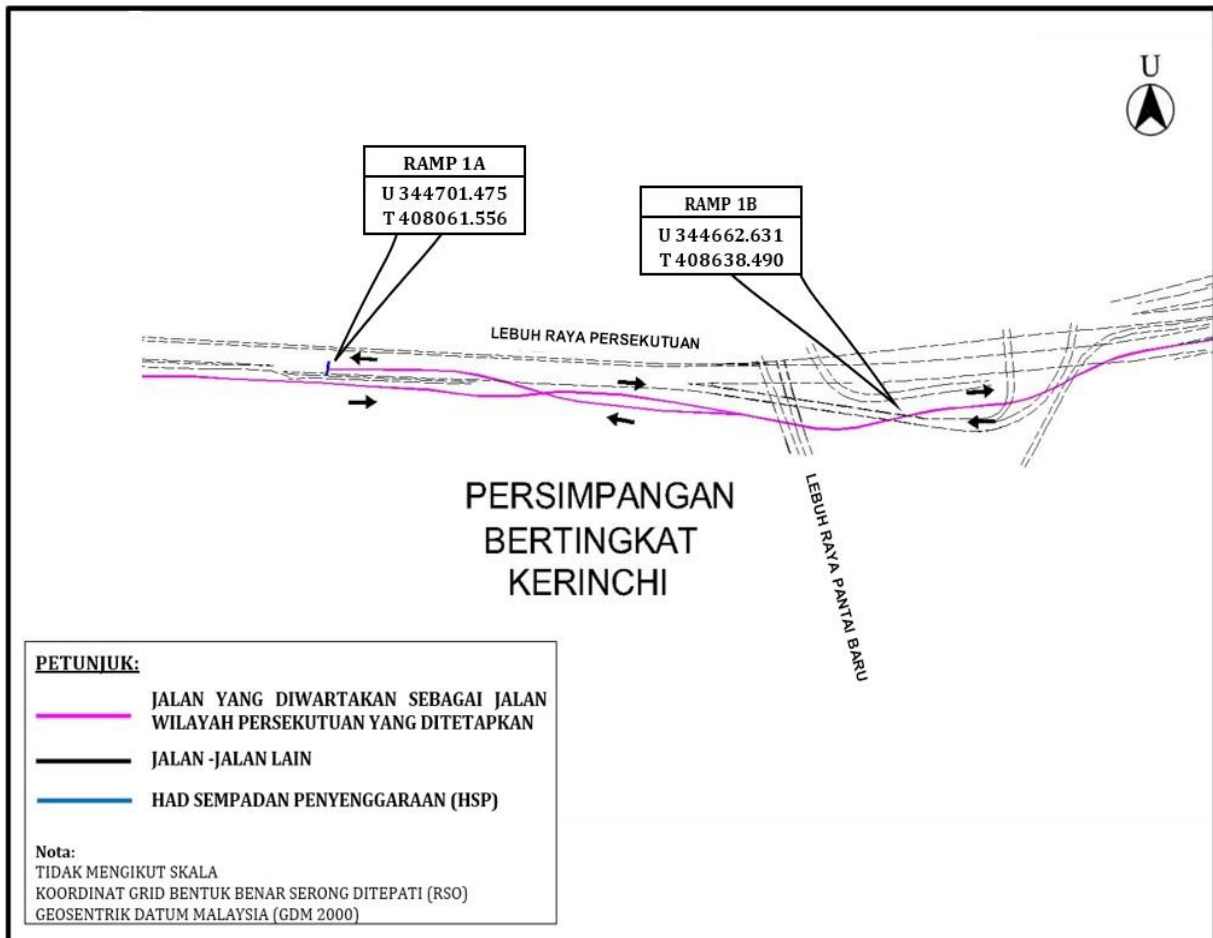
### **Pindaan Jadual Kedua**

3. Perintah ibu dipinda dalam Jadual Kedua dengan memasukkan selepas PETA 5 - PERSIMPANGAN BERTINGKAT TAMAN MELATI peta yang berikut:

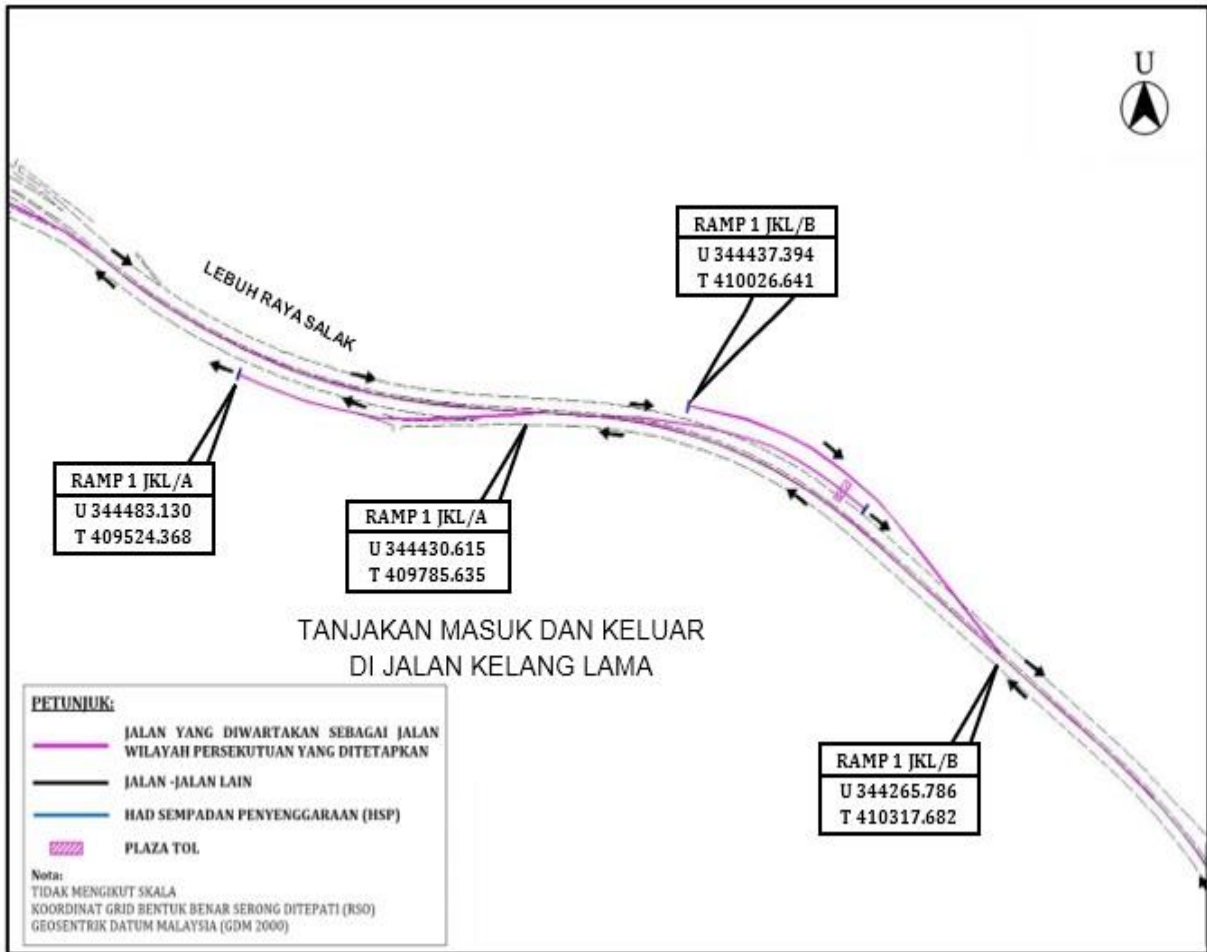
“PETA 6 - LALUAN UTAMA DARI PERSIMPANGAN BERTINGKAT KERINCHI  
KE PERSIMPANGAN SALAK



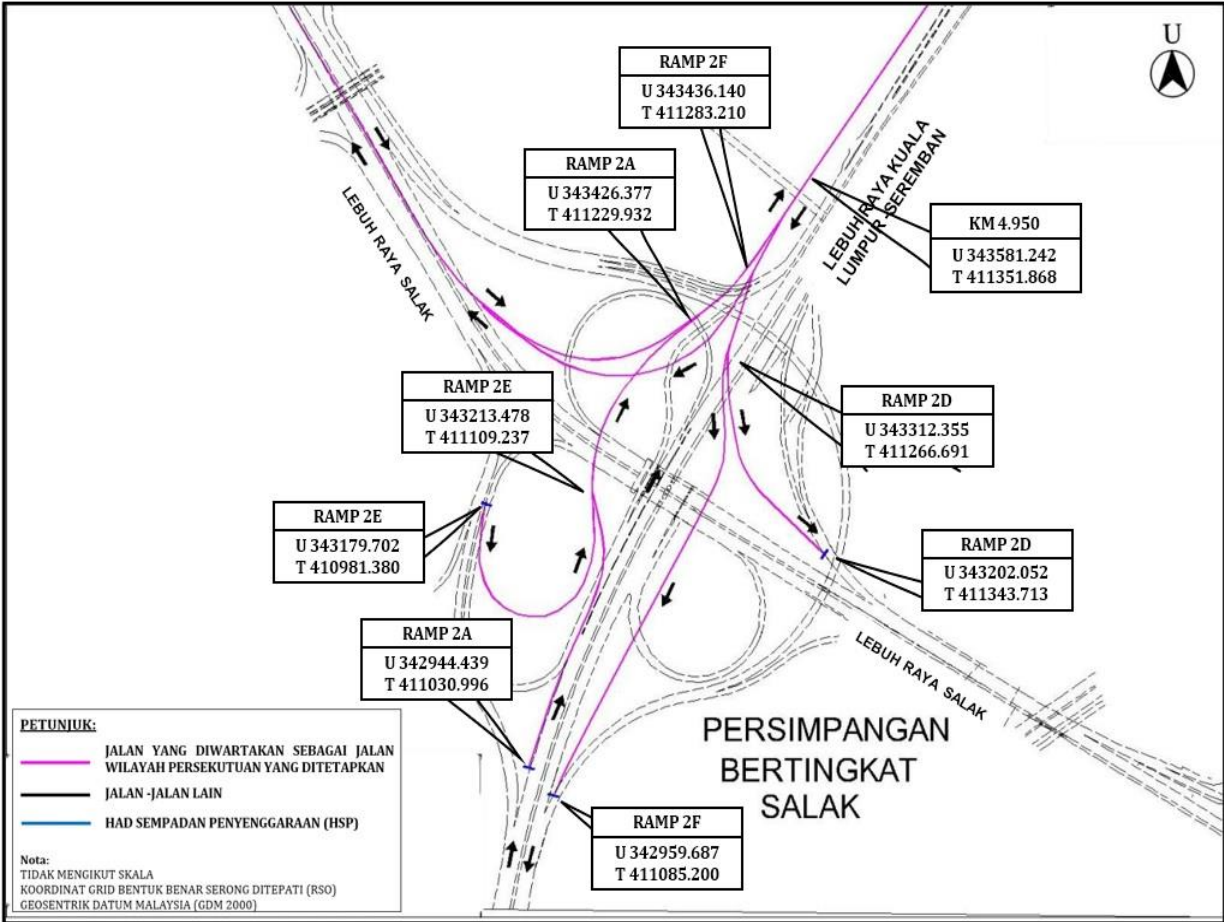
PETA 7 - PERSIMPANGAN BERTINGKAT KERINCHI



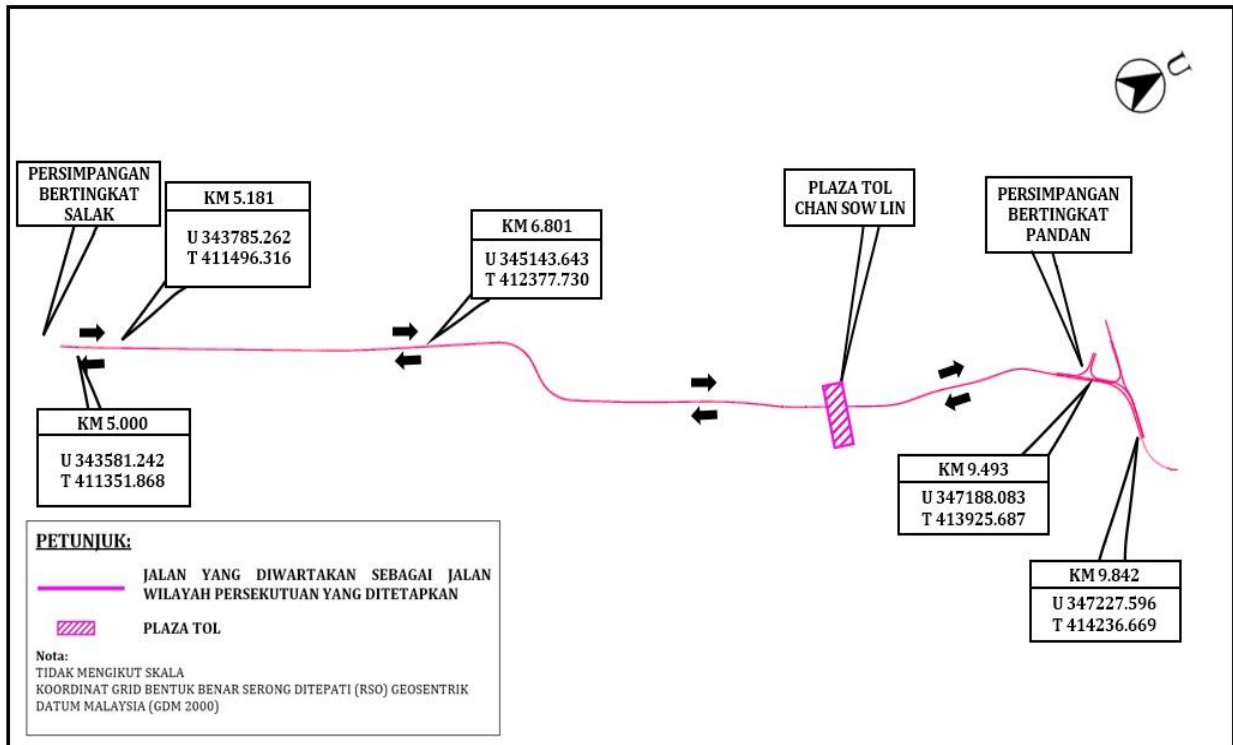
PETA 8 - TANJAKAN MASUK DAN KELUAR DI JALAN KELANG LAMA



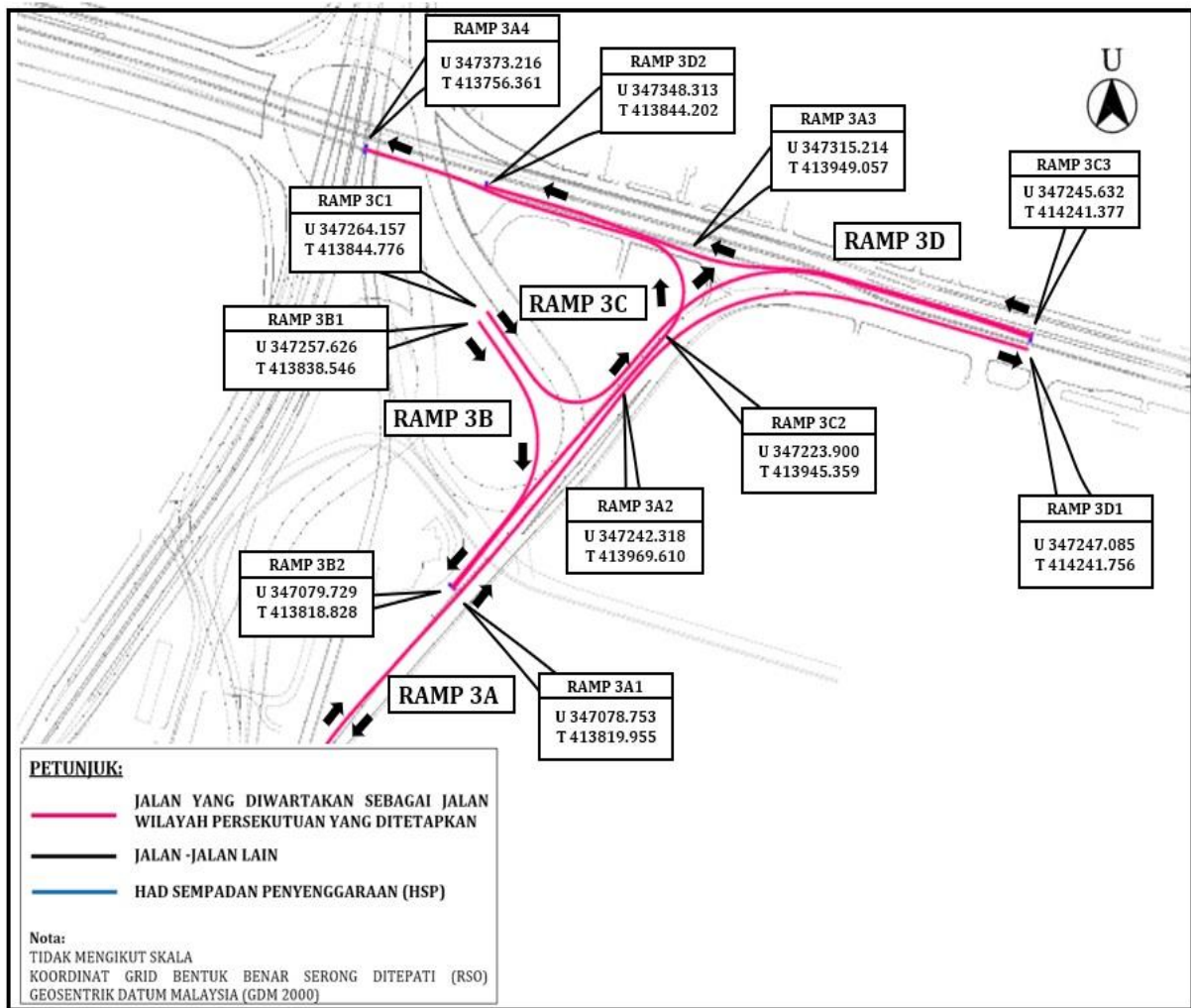
PETA 9 - PERSIMPANGAN BERTINGKAT SALAK



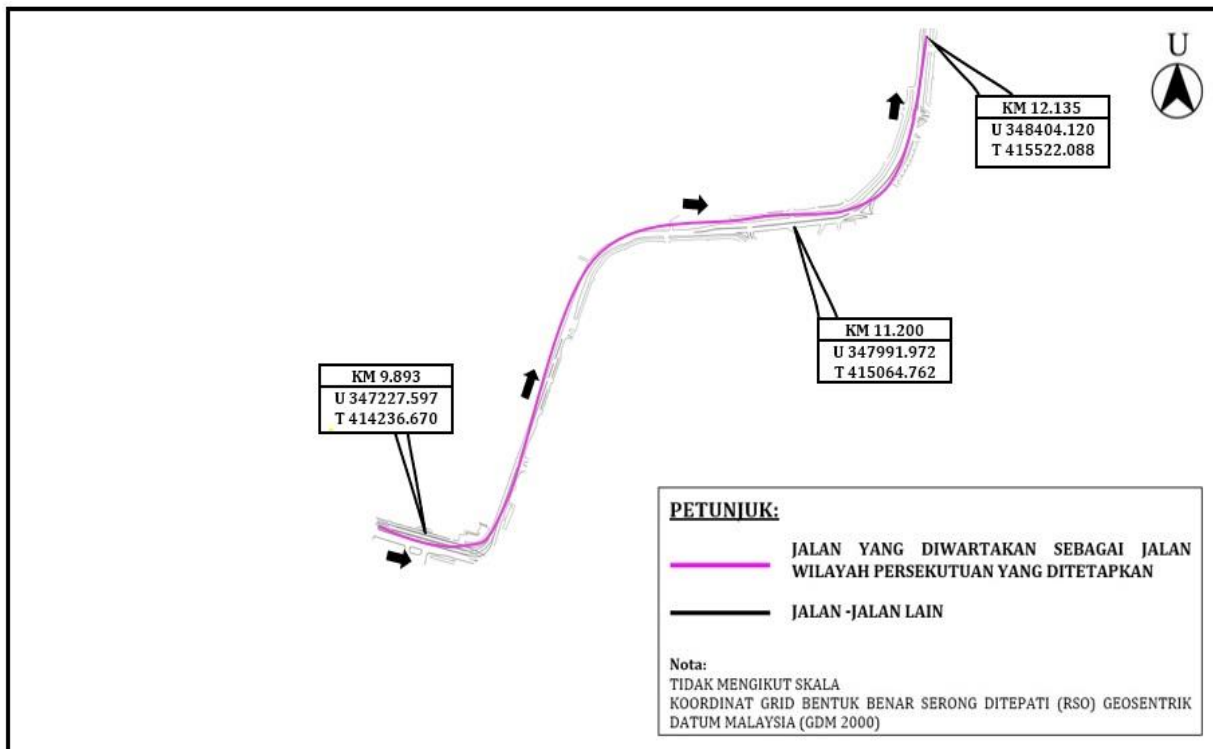
PETA 10 - LALUAN UTAMA DUA TINGKAT DARI PERSIMPANGAN BERTINGKAT SALAK  
KE PERSIMPANGAN BERTINGKAT PANDAN



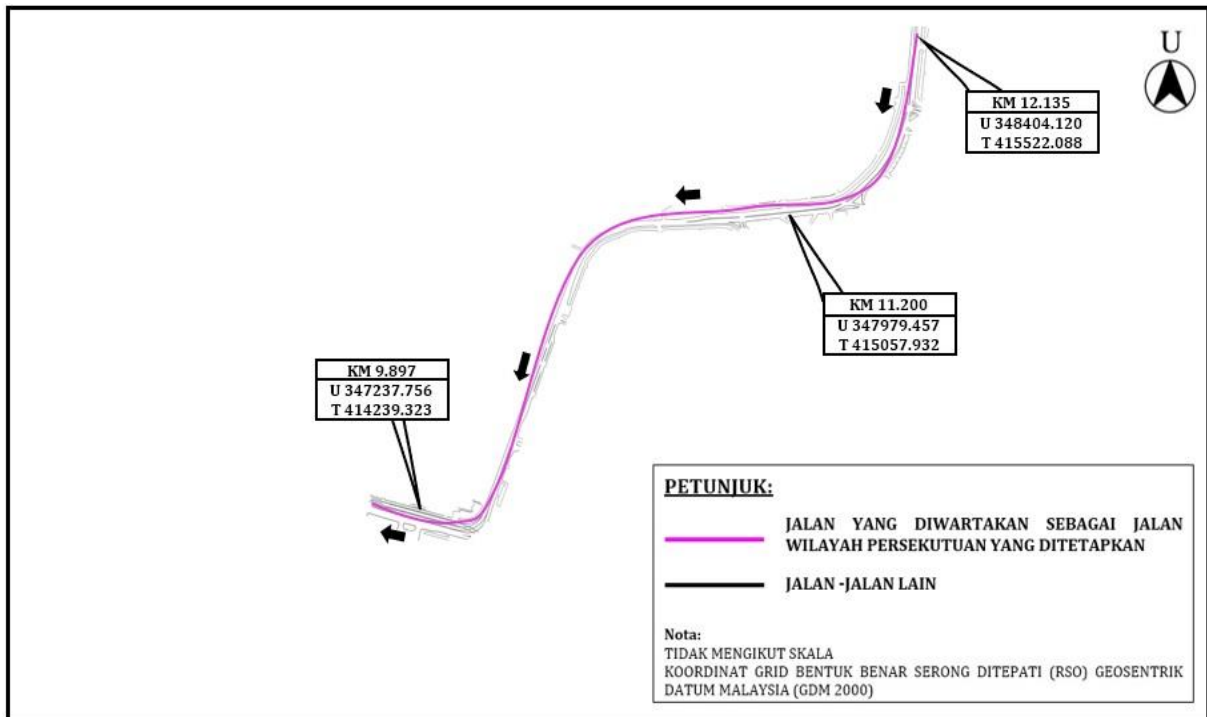
PETA 11 - PERSIMPANGAN BERTINGKAT PANDAN



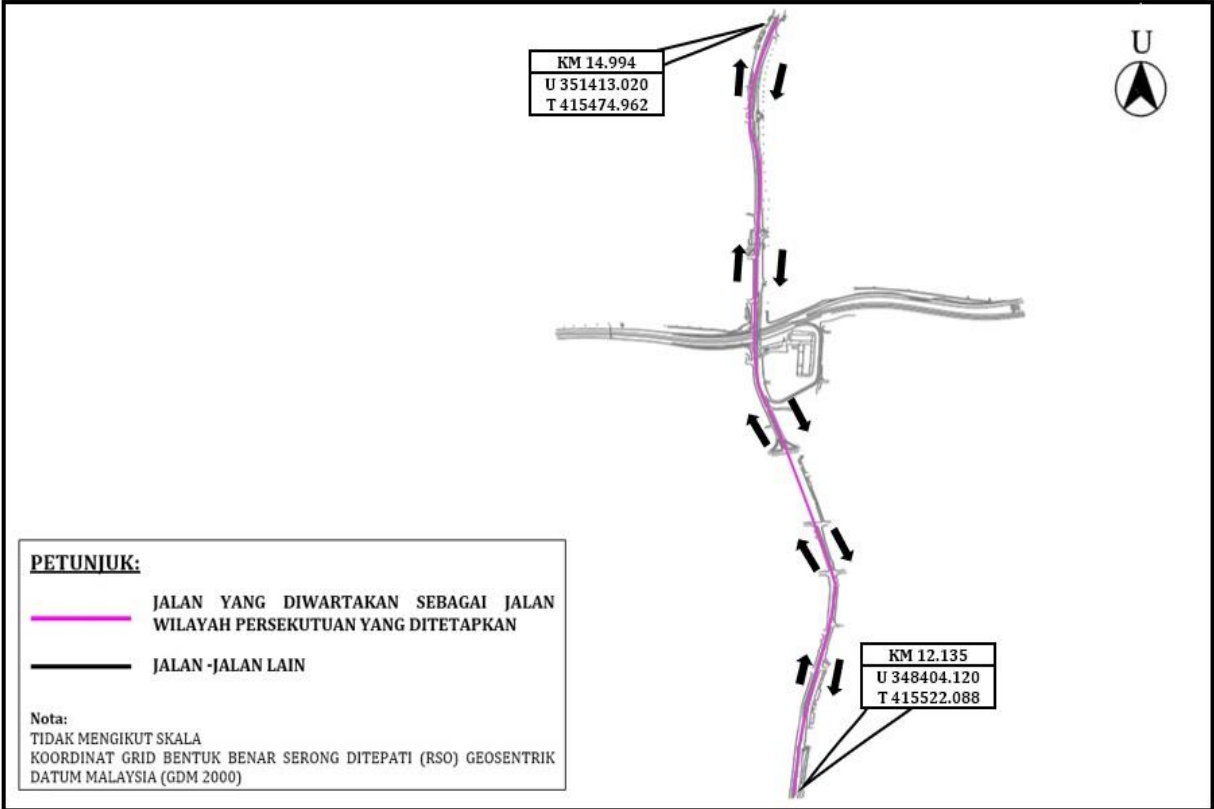
PETA 12 - LALUAN UTAMA DUA TINGKAT ARAH UTARA



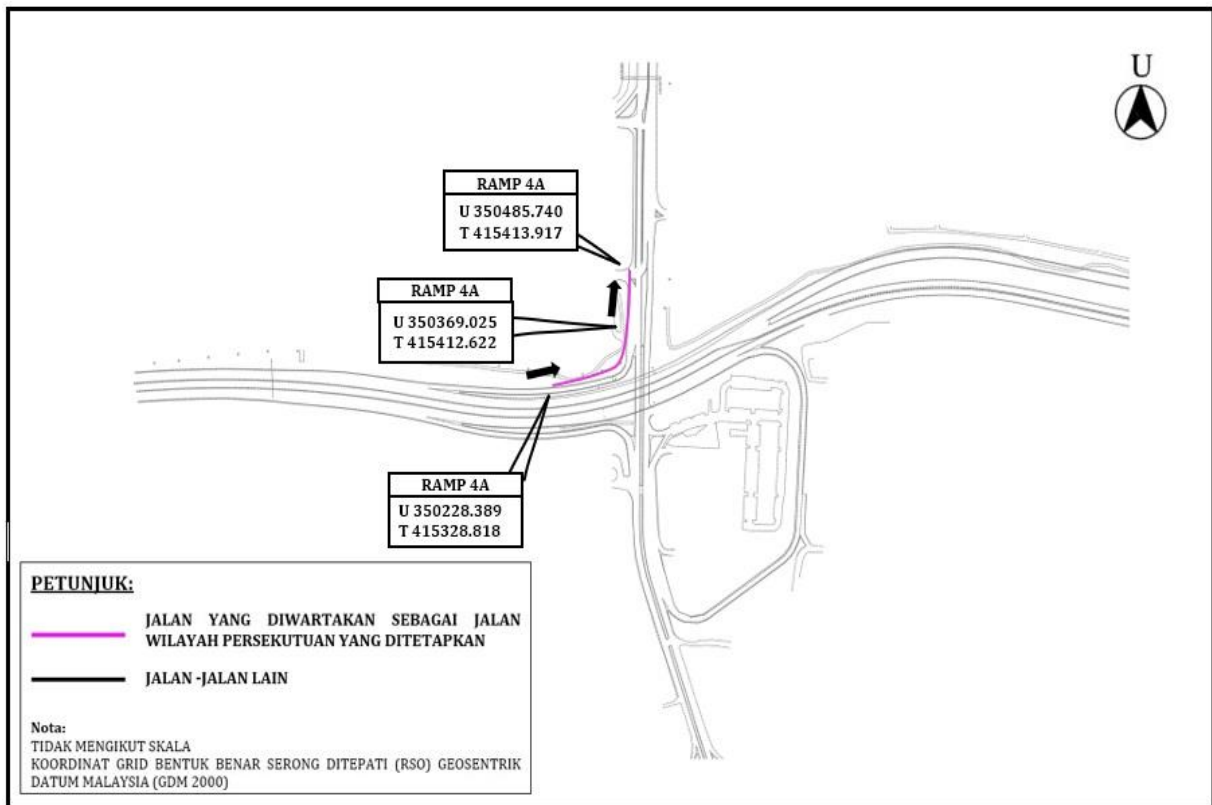
PETA 13 - LALUAN UTAMA DUA TINGKAT ARAH SELATAN



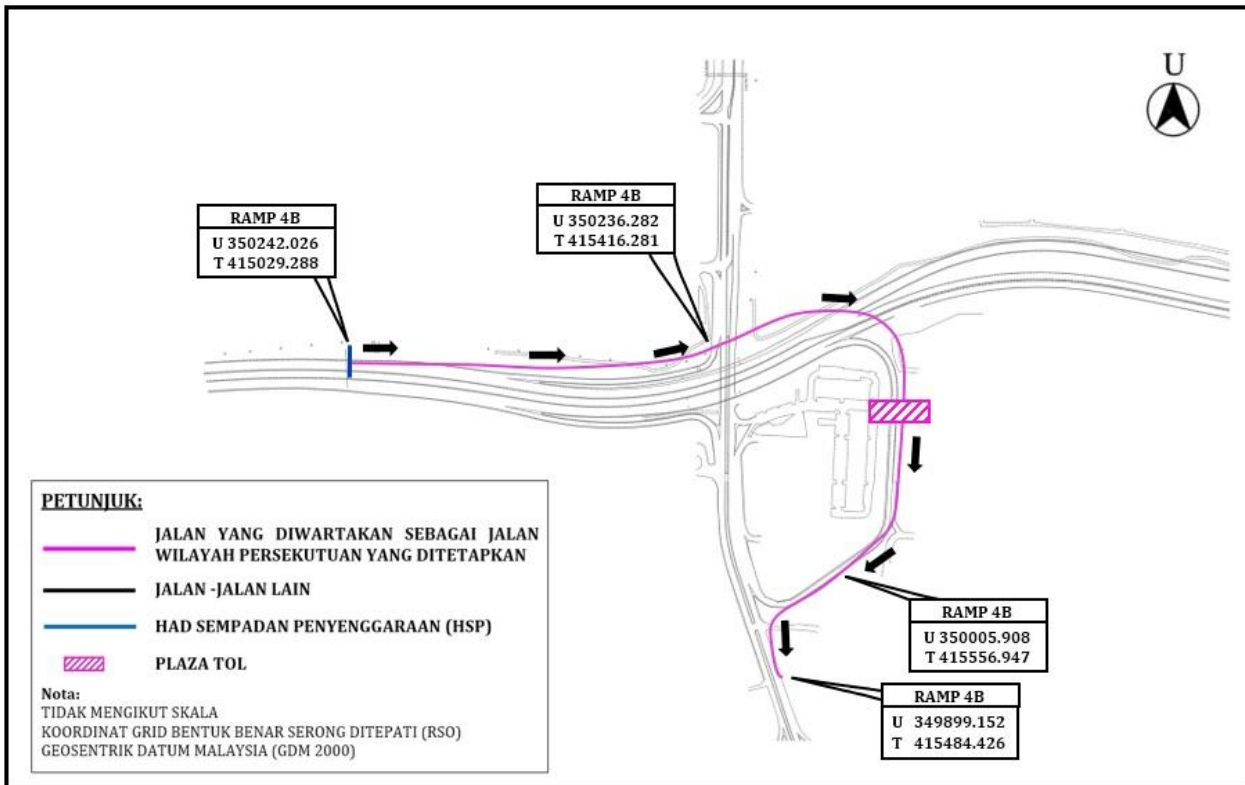
PETA 14 - LALUAN UTAMA



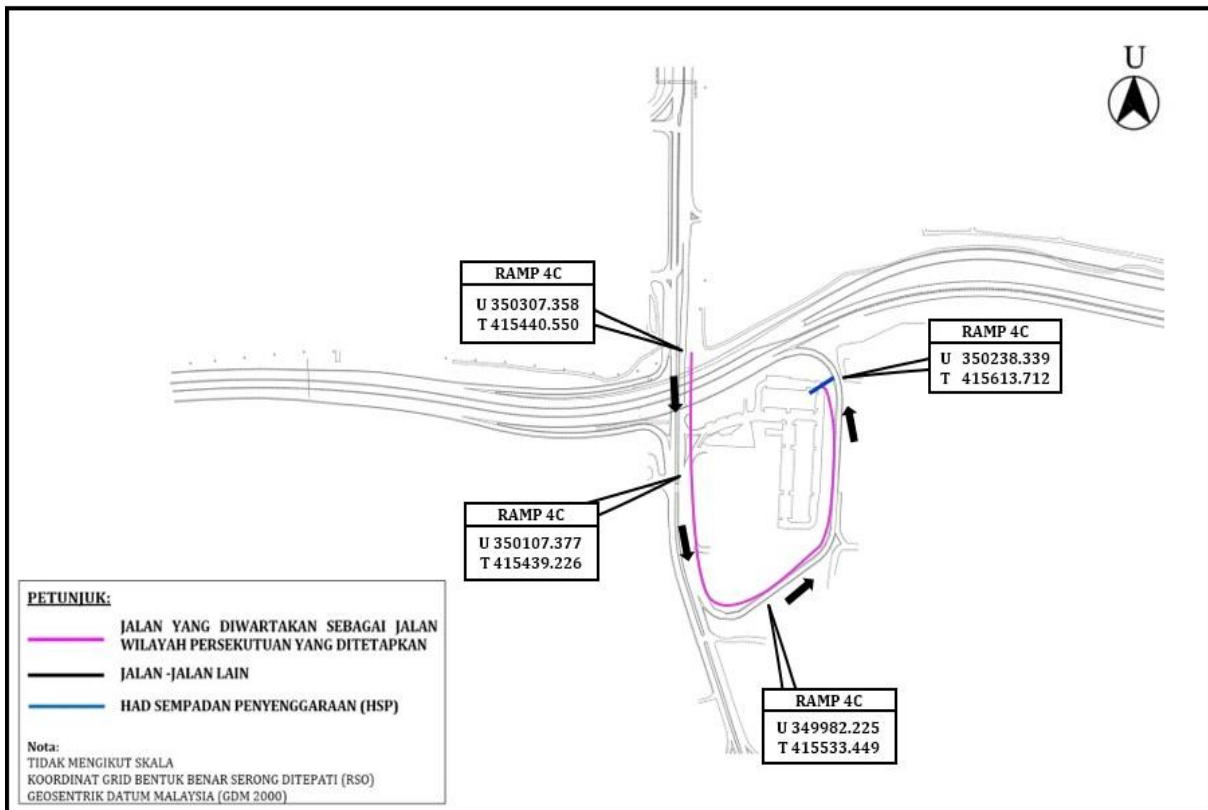
PETA 15 – PERSIMPANGAN BERTINGKAT AMPANG RAMP 4A



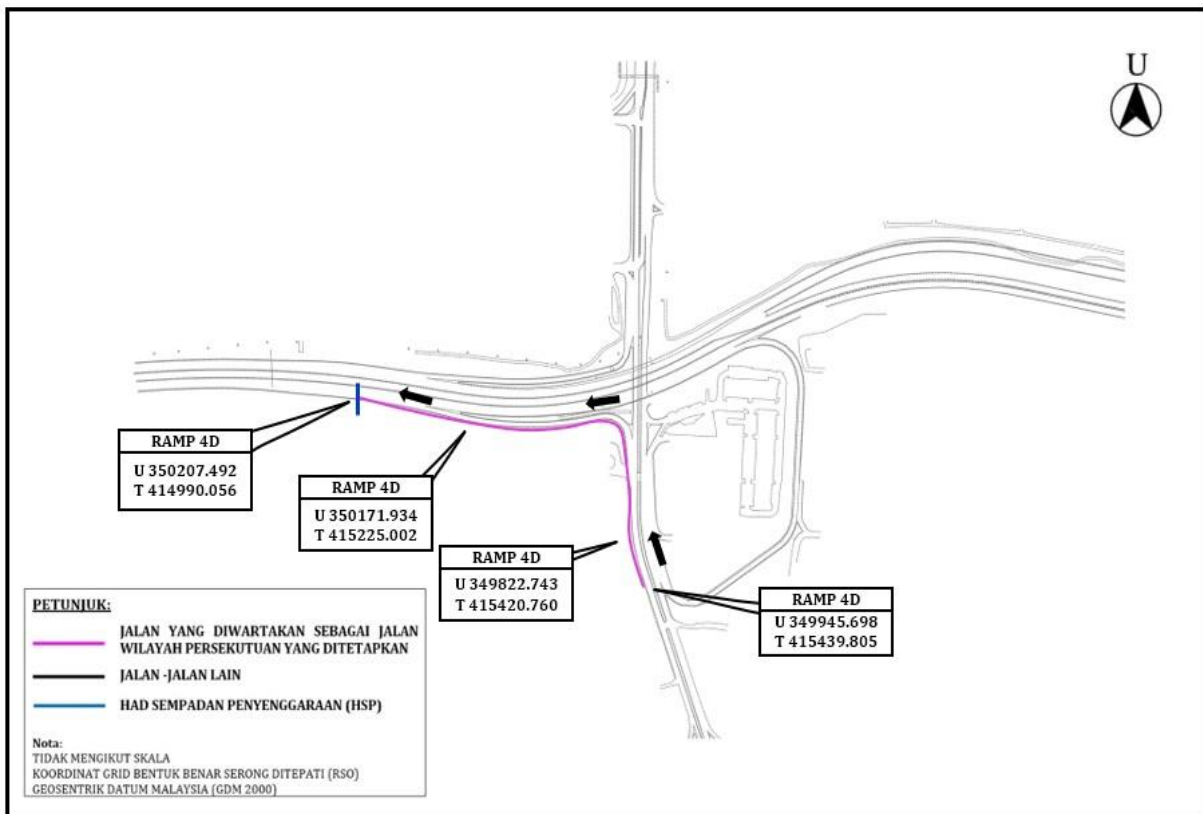
PETA 16 - PERSIMPANGAN BERTINGKAT AMPANG RAMP 4B



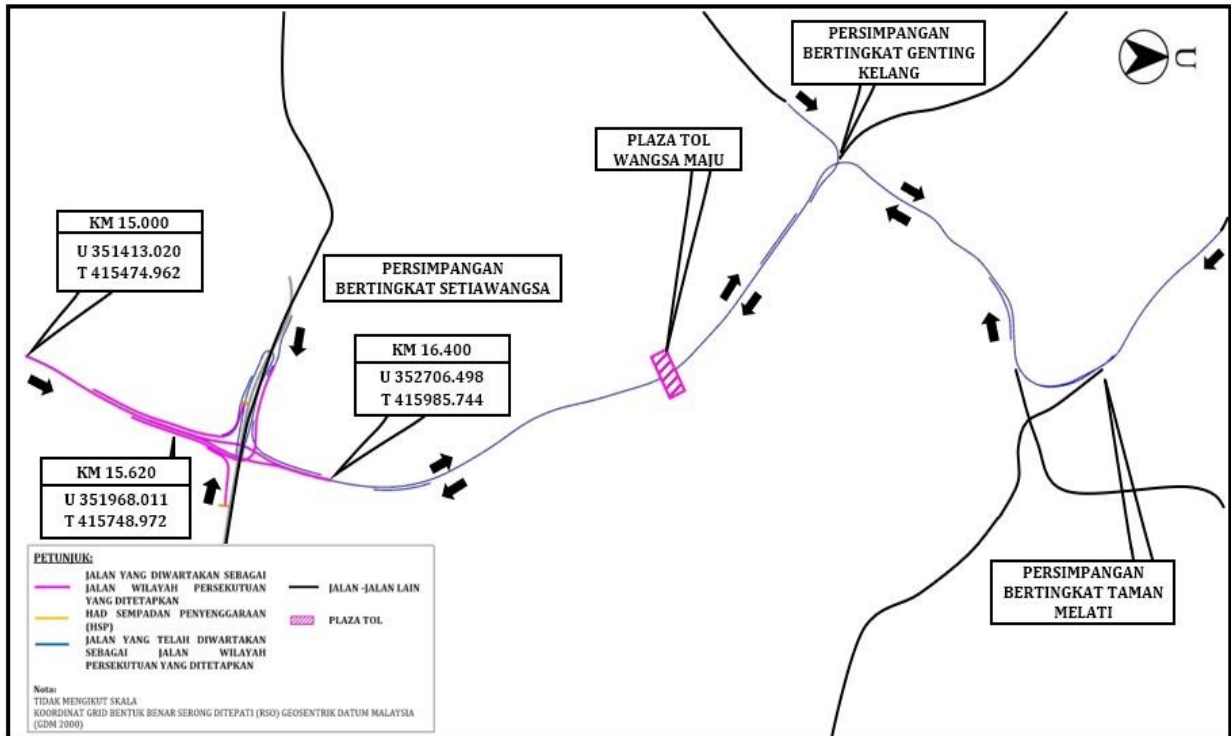
PETA 17 - PERSIMPANGAN BERTINGKAT AMPANG RAMP 4C



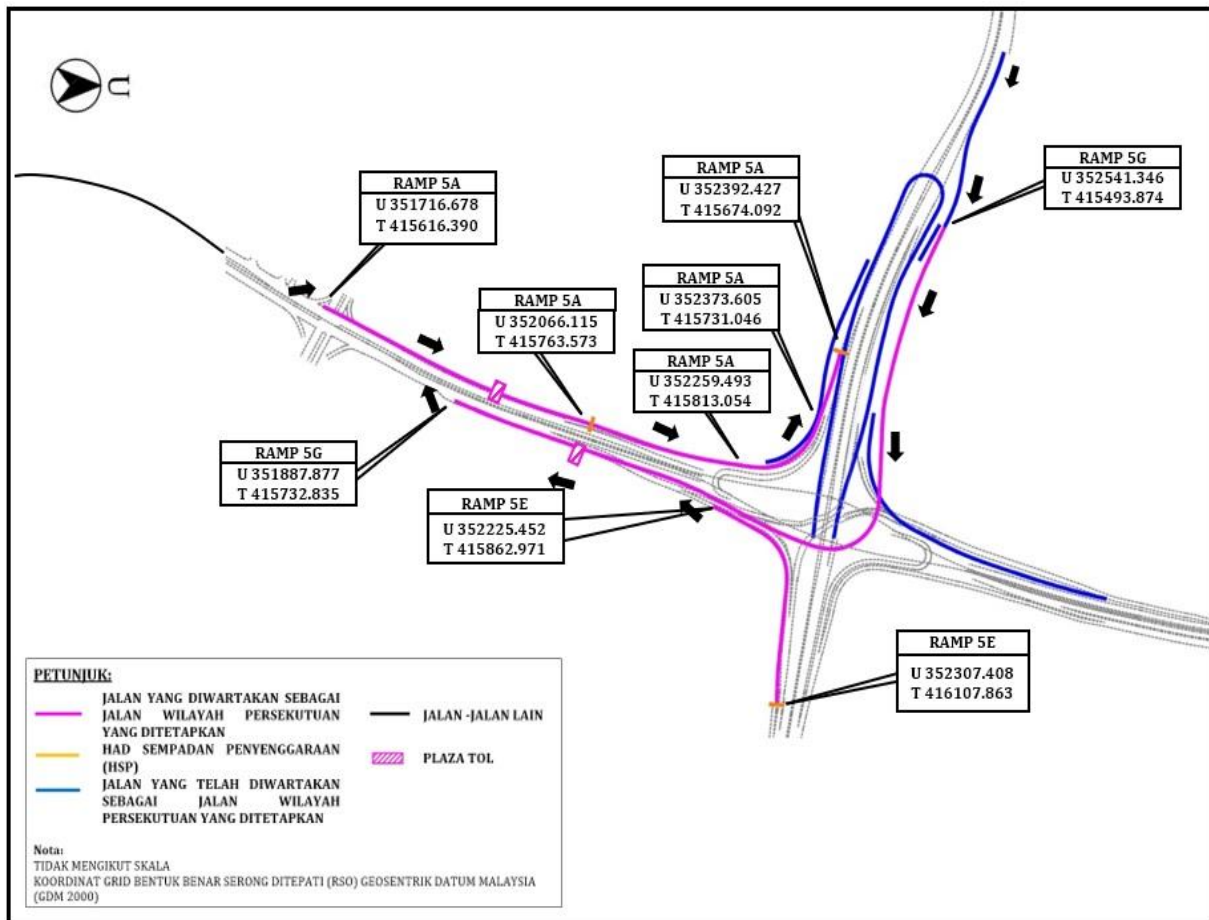
PETA 18 - PERSIMPANGAN BERTINGKAT AMPANG RAMP 4D



PETA 19 - LALUAN UTAMA DARI PERSIMPANGAN BERTINGKAT SETIAWANGSA  
KE PERSIMPANGAN BERTINGKAT TAMAN MELATI



PETA 20 - PERSIMPANGAN BERTINGKAT SETIAWANGSA



Dibuat 2 November 2023  
[KKR.PUU.110-1/7/44; PN(PU2)460/]ld. 129]

DATO SRI ALEXANDER NANTA LINGGI  
*Menteri Kerja Raya*

## ROAD TRANSPORT ACT 1987

## SPEED LIMIT (SETIAWANGSA-PANTAI EXPRESSWAY) (AMENDMENT) ORDER 2023

IN exercise of the powers conferred by subsection 69(2) of the Road Transport Act 1987 [Act 333], the Minister makes the following order:

**Citation and commencement**

1. (1) This order may be cited as the **Speed Limit (Setiawangsa-Pantai Expressway) (Amendment) Order 2023**.

(2) This Order comes into operation on 3 November 2023.

**Amendment of paragraph 2**

2. The Speed Limit (Setiawangsa-Pantai Expressway) Order 2021 [P.U. (A) 456/2021], which is referred to as the “principal Order” in this Order, is amended by substituting for subparagraph 2(2) the following subparagraph:

“(2) The road with speed limit specified in subparagraph (1) is shown on the maps in the Second Schedule.”.

**Amendment of First Schedule**

3. The principal Order is amended in the First Schedule—

(a) in subitem (e)(i), by deleting the word “and”;

(b) in item (f), by substituting for the full stop at the end of the item a semicolon; and

(c) by inserting after item (f) the following items:

(1) Road	(2) Speed Limit (km/h)
<i>(g)</i> Main line at kilometre -0.031 at coordinates N 345048.296, E 407457.781 of the RSO GDM2000 Grid and ending at kilometre 0.850 at coordinates N 344686.970, E 407936.190 of the RSO GDM2000 Grid north bound;	40
<i>(h)</i> Main line at kilometre 0.850 at coordinates N 344686.970, E 407936.190 of the RSO GDM2000 Grid and ending at kilometre 2.650 at coordinates N 344459.717, E 409658.270 of RSO GDM2000 Grid north bound;	60
<i>(i)</i> Main line at kilometre 1.550 at coordinates N 344662.631, E 408638.490 of the RSO GDM2000 Grid and ending at kilometre 2.650 at coordinates N 344459.717, E 409658.270 of the RSO GDM2000 Grid south bound;	60
<i>(j)</i> Main line at kilometre 2.650 at coordinates N 344459.717, E 409658.270 of the RSO GDM2000 Grid and ending at kilometre 4.120 at coordinates N 343683.386, E 410812.215 of the RSO GDM2000 Grid north and south bounds;	80
<i>(k)</i> Main line at kilometre 4.120 at coordinates N 343683.386, E 410812.215 of the RSO GDM2000 Grid and ending at kilometre 4.950 at coordinates N 343581.242, E 411351.868 of the RSO GDM2000 Grid north and south bounds;	60
<i>(l)</i> Kerinchi Interchange from RAMP 1A and 1B at coordinates N 344662.631, E 408638.490 of the RSO GDM2000 Grid and ending at the Limit of Maintenance Responsibility at coordinates N 344701.475, E 408061.556 of the RSO GDM2000 Grid;	40

	(1) Road	(2) Speed Limit (km/h)
<i>(m)</i>	On and Off Ramps at Jalan Kelang Lama from—	
	(i) RAMP 1 JKL/A at coordinates N 344430.615, E 409785.635 of the RSO GDM2000 Grid and ending at the Limit of Maintenance Responsibility at coordinates N 344483.130, E 409524.368 of the RSO GDM2000 Grid; and	50
	(ii) RAMP 1 JKL/B from the Limit of Maintenance Responsibility at coordinates N 344437.394, E 410026.641 of the RSO GDM2000 Grid and ending at coordinates N 344265.786, E 410317.682 of the RSO GDM2000 Grid;	50
<i>(n)</i>	Salak Interchange from—	
	(i) RAMP 2A from the Limit of Maintenance Responsibility at coordinates N 342944.439, E 411030.996 of the RSO GDM2000 Grid and ending at coordinates N 343426.377, E 411229.932 of the RSO GDM2000 Grid;	50
	(ii) RAMP 2D at coordinates N 343312.355, E 411266.691 of the RSO GDM2000 Grid and ending at the Limit of Maintenance Responsibility at coordinates N 343202.052, E 411343.713 of the RSO GDM2000 Grid;	50
	(iii) RAMP 2E from the Limit of Maintenance Responsibility at coordinates N 343179.702, E 410981.380 of the RSO GDM2000 Grid and ending at coordinates N 343213.478, E 411109.237 of the RSO GDM2000 Grid; and	40
	(iv) RAMP 2F at coordinates N 343436.140, E 411283.210 of the RSO GDM2000 Grid and ending at the Limit of Maintenance Responsibility at coordinates N 342959.687, E 411085.200 of the RSO GDM2000 Grid;	50

(1) Road	(2) Speed Limit (km/h)
<i>(o)</i> Main line at kilometre 5.000 at coordinates N 343581.242, E 411351.868 of the RSO GDM2000 Grid and ending at kilometre 5.181 at coordinates N 343785.262, E 411496.316 of the RSO GDM2000 Grid north and south bounds;	60
<i>(p)</i> Main line at kilometre 5.181 of coordinates N 343785.262, E 411496.316 of the RSO GDM2000 Grid and ending at kilometre 6.801 at coordinates N 345143.643, E 412377.730 of the RSO GDM2000 Grid north and south bounds;	80
<i>(q)</i> Main line at kilometre 6.801 at coordinates N 345143.643, E 412377.730 of the RSO GDM2000 Grid and ending at kilometre 9.493 at coordinates N 347188.083, E 413925.687 of the RSO GDM2000 Grid north and south bounds;	60
<i>(r)</i> Main line at kilometre 9.493 at coordinates N 347188.083, E 413925.687 of the RSO GDM2000 Grid and ending at kilometre 9.842 at coordinates N 347227.596, E 414236.669 of the RSO GDM2000 Grid north and south bounds;	50
<i>(s)</i> Pandan Interchange from—	
<i>(i)</i> RAMP 3A—	
<i>(A)</i> at coordinates N 347078.753, E 413819.955 of the RSO GDM2000 Grid and ending at coordinates N 347242.318, E 413969.610 of the RSO GDM2000 Grid;	50
<i>(B)</i> at coordinates N 347242.318, E 413969.610 of the RSO GDM2000 Grid and ending at coordinates N 347315.214, E 413949.057 of the RSO GDM2000 Grid; and	30

(1) Road	(2) Speed Limit (km/h)
(C) at coordinates N 347315.214, E 413949.057 of the RSO GDM2000 Grid and ending at coordinates N 347373.216, E 413756.361 of the RSO GDM2000 Grid;	50
(ii) RAMP 3B from the Limit of Maintenance Responsibility at coordinates N 347257.626, E 413838.546 of the RSO GDM2000 Grid and ending at coordinates N 347079.729, E 413818.828 of the RSO GDM2000 Grid;	50
(iii) RAMP 3C—	
(A) from the Limit of Maintenance Responsibility at coordinates N 347264.157, E 413844.776 of the RSO GDM2000 Grid and ending at coordinates N 347223.900, E 413945.359 of the RSO GDM2000 Grid; and	30
(B) at coordinates N 347223.900, E 413945.359 of the RSO GDM2000 Grid and ending at coordinates N 347245.632, E 414241.377 of the RSO GDM2000 Grid; and	50
(iv) RAMP 3D at coordinates N 347247.085, E 414241.756 of the RSO GDM2000 Grid and ending at coordinates N 347348.313, E 413844.202 of the RSO GDM2000 Grid;	50
(t) Main line double deck north bound at kilometre 9.893 at coordinates N 347227.597, E 414236.670 of the RSO GDM2000 Grid and ending at kilometre 11.200 at coordinates N 347991.972, E 415064.762 of the RSO GDM2000;	50

(1) Road	(2) Speed Limit (km/h)
(u) Main line double deck north bound at kilometre 11.200 at coordinates N 347991.972, E 415064.762 of the RSO GDM2000 Grid and ending at kilometre 12.135 at coordinates N 348404.120, E 415522.088 of the RSO GDM2000 north and south bounds;	60
(v) Main line double deck south bound at kilometre 9.897 at coordinates N 347237.756, E 414239.323 of the RSO GDM2000 Grid and ending at kilometre 11.200 at coordinates N 347979.457, E 415057.932 of the RSO GDM2000;	50
(w) Main line double deck south bound at kilometre 11.200 at coordinates N 347979.457, E 415057.932 of the RSO GDM2000 Grid and ending at kilometre 12.135 at coordinates N 348404.120, E 415522.088 of the RSO GDM2000;	60
(x) Main line at kilometre 12.135 at coordinates N 348404.120, E 415522.088 of the RSO GDM2000 Grid and ending at kilometre 14.994 at coordinates N 351413.020, E 415474.962 of the RSO GDM2000 north and south bounds;	80
(y) Ampang Interchange from—	
(i) RAMP 4A—	
(A) at coordinates N 350228.389, E 415328.818 of the RSO GDM2000 Grid and ending at coordinates N 350369.025, E 415412.622 of the RSO GDM2000 Grid; and	30
(B) at coordinates N 350369.025, E 415412.622 of the RSO GDM2000 Grid and ending at coordinates N 350485.740, E 415413.917 of the RSO GDM2000 Grid;	50

(1) Road	(2) Speed Limit (km/h)
(ii) RAMP 4B—	
(A) from the Limit of Maintenance Responsibility at coordinates N 350242.026, E 415029.288 of the RSO GDM2000 Grid and ending at coordinates N 350236.282, E 415416.281 of the RSO GDM2000 Grid;	50
(B) at coordinates N 350236.282, E 415416.281 of the RSO GDM2000 Grid and ending at coordinates N 350005.908, E 415556.947 of the RSO GDM2000 Grid; and	40
(C) at coordinates N 350005.908, E 415556.947 of the RSO GDM2000 Grid and ending at coordinates N 349899.152, E 415484.426 of the RSO GDM2000 Grid;	30
(iii) RAMP 4C—	
(A) at coordinates N 350307.358, E 415440.550 of the RSO GDM2000 Grid and ending at coordinates N 350107.377, E 415439.226 of the RSO GDM2000 Grid;	50
(B) at coordinates N 350107.377, E 415439.226 of the RSO GDM2000 Grid and ending at coordinates N 349982.225, E 415533.449 of the RSO GDM2000 Grid; and	30
(C) at coordinates N 349982.225, E 415533.449 of the RSO GDM2000 Grid and ending at the Limit of Maintenance Responsibility at coordinates N 350238.339, E 415613.712 of the RSO GDM2000 Grid;	40

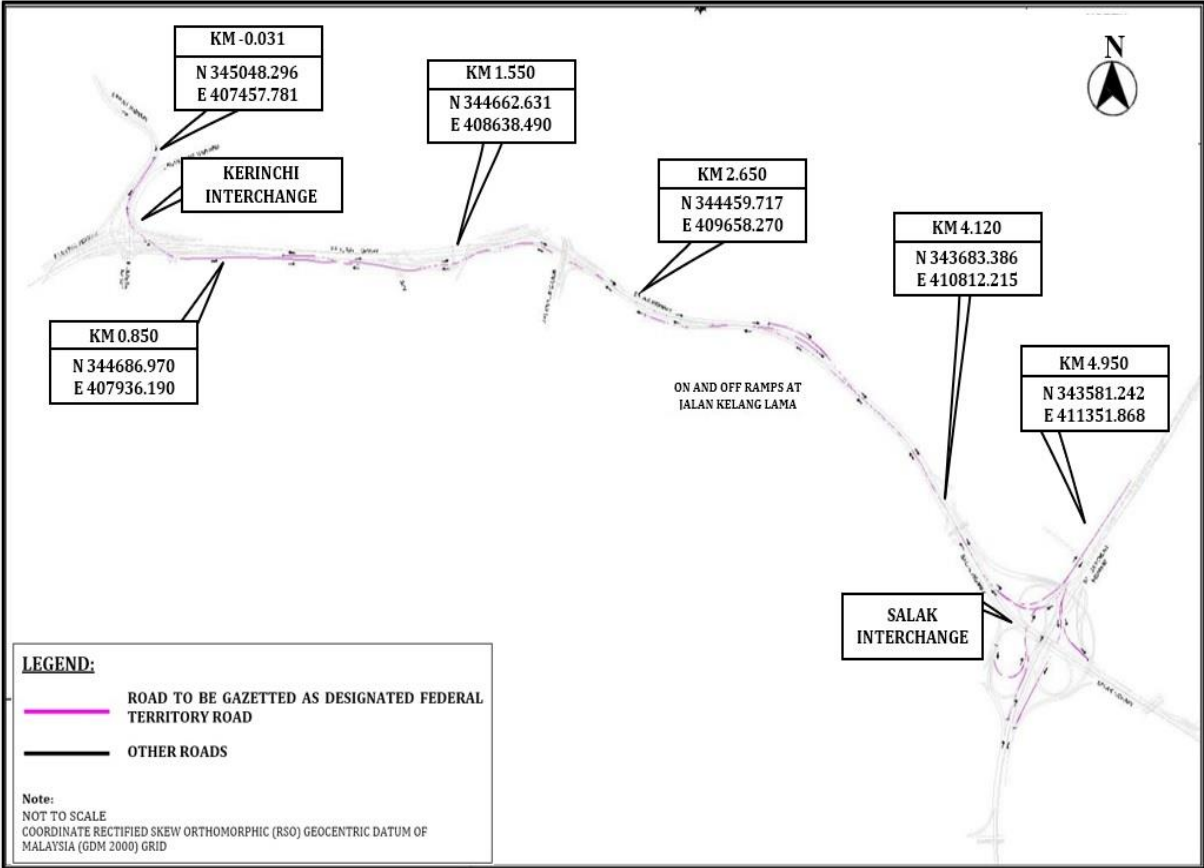
(1) Road	(2) Speed Limit (km/h)
(iv) RAMP 4D—	
(A) at coordinates N 349945.698, E 415439.805 of the RSO GDM2000 Grid and ending at coordinates N 349822.743, E 415420.760 of the RSO GDM2000 Grid;	50
(B) at coordinates N 349822.743, E 415420.760 of the RSO GDM2000 Grid and ending at coordinates N 350171.934, E 415225.002 of the RSO GDM2000 Grid; and	30
(C) at coordinates N 350171.934, E 415225.002 of the RSO GDM2000 Grid and ending at the Limit of Maintenance Responsibility at coordinates N 350207.492, E 414990.056 of the RSO GDM2000 Grid;	50
(z) Main line at kilometre 15.000 at coordinates N 351413.020, E 415474.962 of the RSO GDM2000 Grid and ending at kilometre 15.620 at coordinates N 351968.011, E 415748.972 of the RSO GDM2000 Grid north and south bounds;	80
(aa) Main line at kilometre 15.620 at coordinates N 351968.011, E 415748.972 of the RSO GDM2000 Grid and ending at kilometre 16.400 at coordinates N 352706.498, E 415985.744 of the RSO GDM2000 Grid north and south bounds; and	60
(bb) Setiawangsa Interchange from—	
(i) Ramp 5A—	
(A) from the Limit of Maintenance Responsibility at coordinates N 352066.115, E 415763.573 of the RSO GDM2000 Grid and at coordinates N 351716.678, E 415616.390 of the RSO GDM2000 Grid	40

(1) Road	(2) Speed Limit (km/h)
and ending at coordinates N 352259.493, E 415813.054 of the RSO GDM2000 Grid;	
(B) at coordinates N 352259.493, E 415813.054 of the RSO GDM2000 Grid and ending at coordinates N 352373.605, E 415731.046 of the RSO GDM2000 Grid; and	30
(C) at coordinates N 352373.605, E 415731.046 of the RSO GDM2000 Grid and ending at the Limit of Maintenance Responsibility at coordinates N 352392.427, E 415674.092 of the RSO GDM2000 Grid;	40
(ii) Ramp 5E from the Limit of Maintenance Responsibility at coordinates N 352307.408, E 416107.863 of the RSO GDM2000 Grid and ending at coordinates N 352225.452, E 415862.971 of the RSO GDM2000 Grid; and	40
(iii) Ramp 5G at coordinates N 352541.346, E 415493.874 of the RSO GDM2000 Grid and ending at coordinates N 351887.877, E 415732.835 of the RSO GDM2000 Grid.	40".

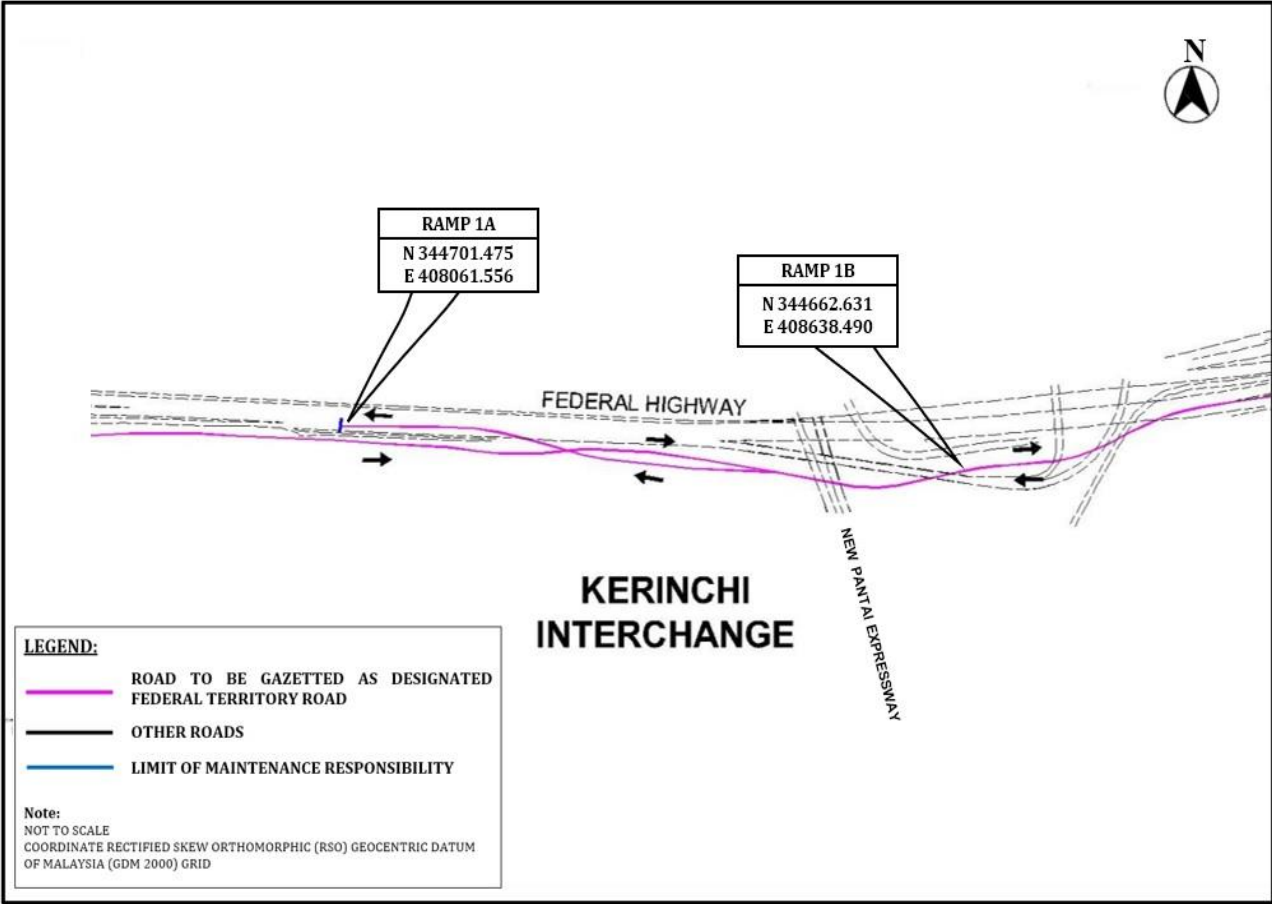
### **Amendment of Second Schedule**

3. The principal Order is amended in the Second Schedule by inserting after MAP 5 - TAMAN MELATI INTERCHANGE the following maps:

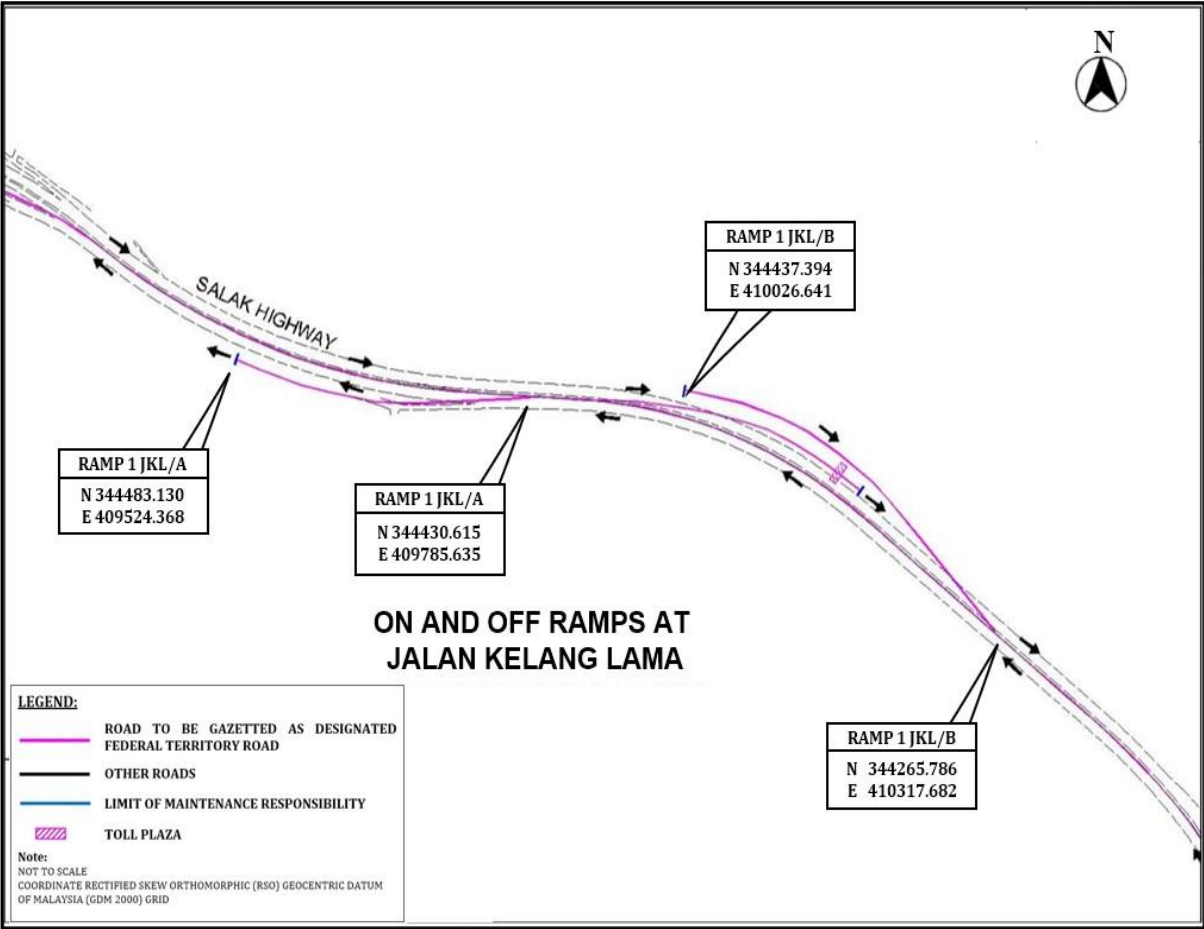
“MAP 6 - MAIN LINE FROM KERINCHI INTERCHANGE TO SALAK INTERCHANGE



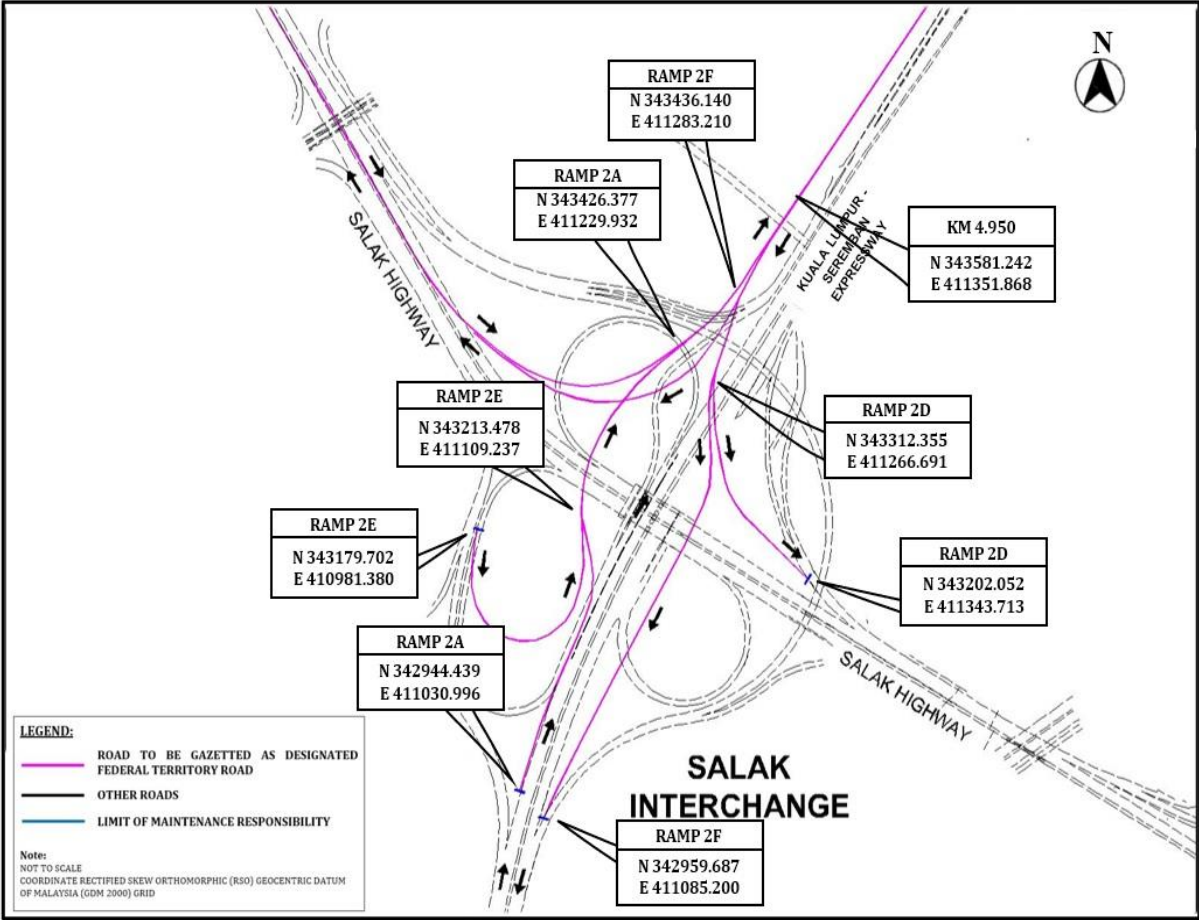
MAP 7 - KERINCHI INTERCHANGE



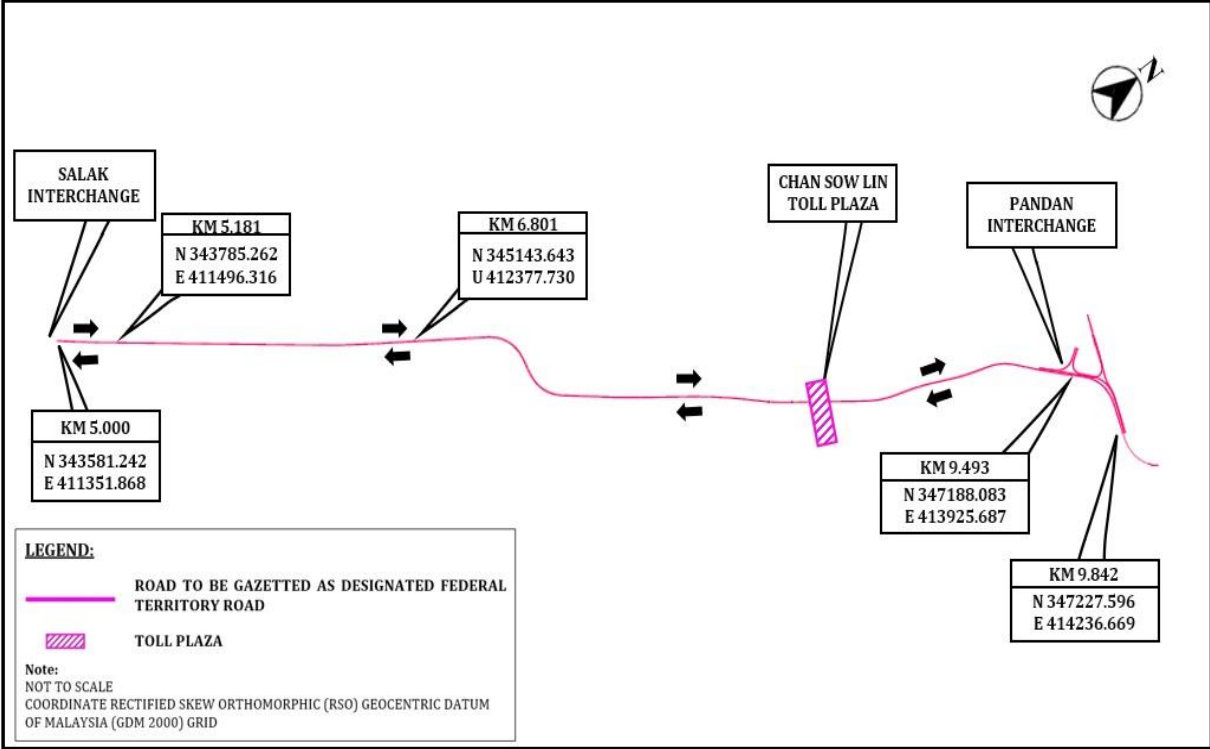
MAP 8 - ON AND OFF RAMPS AT JALAN KELANG LAMA



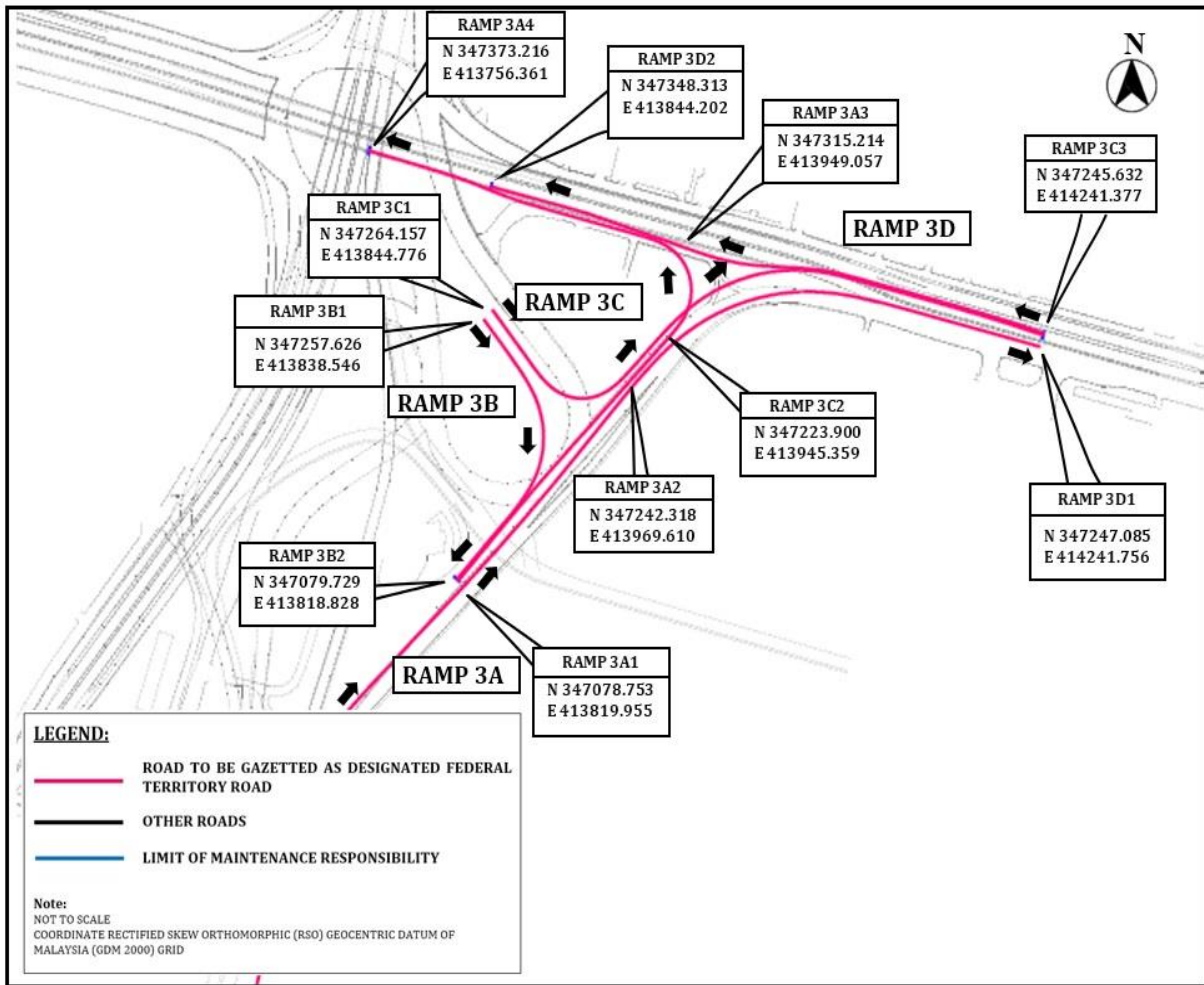
MAP 9 - SALAK INTERCHANGE



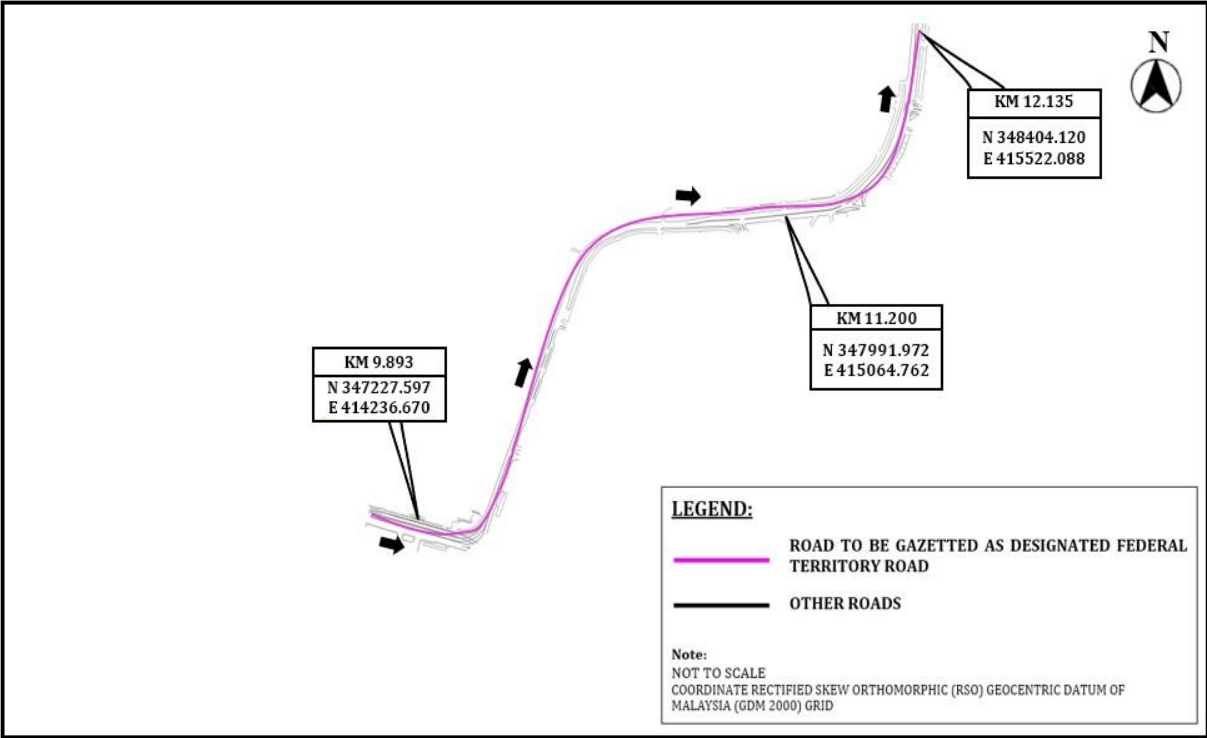
MAP 10 - MAIN LINE DOUBLE DECK FROM SALAK INTERCHANGE TO PANDAN INTERCHANGE



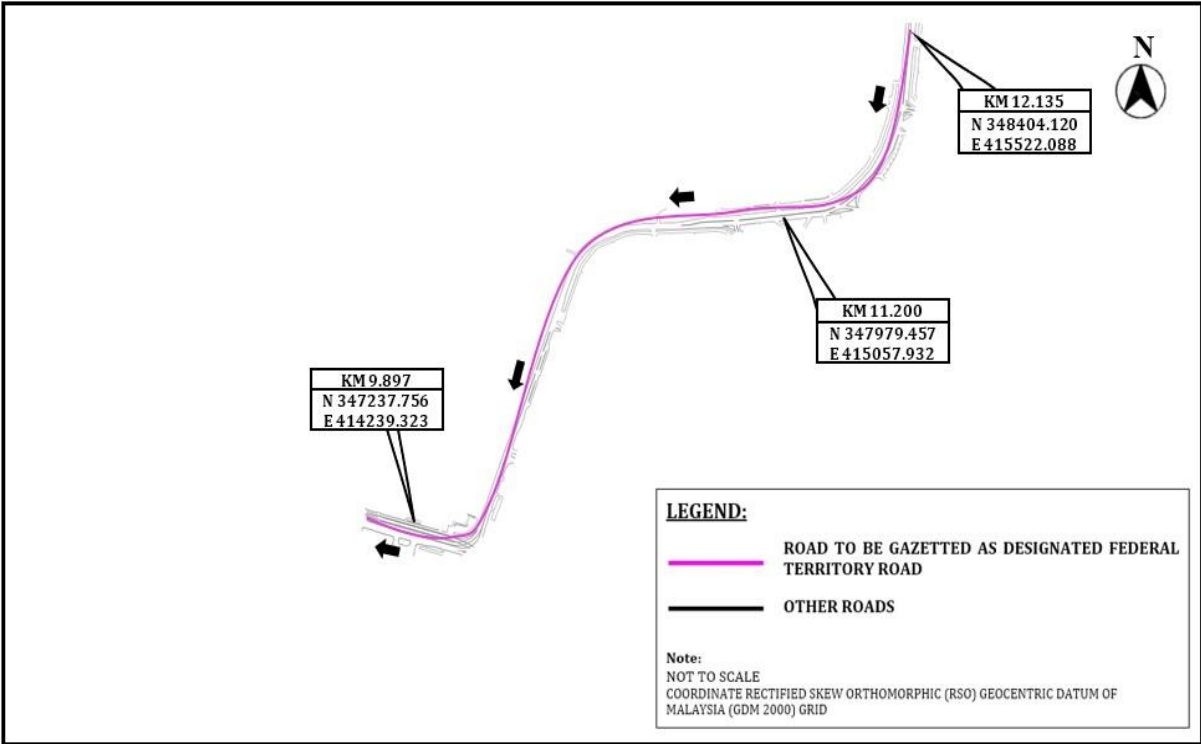
MAP 11 - PANDAN INTERCHANGE



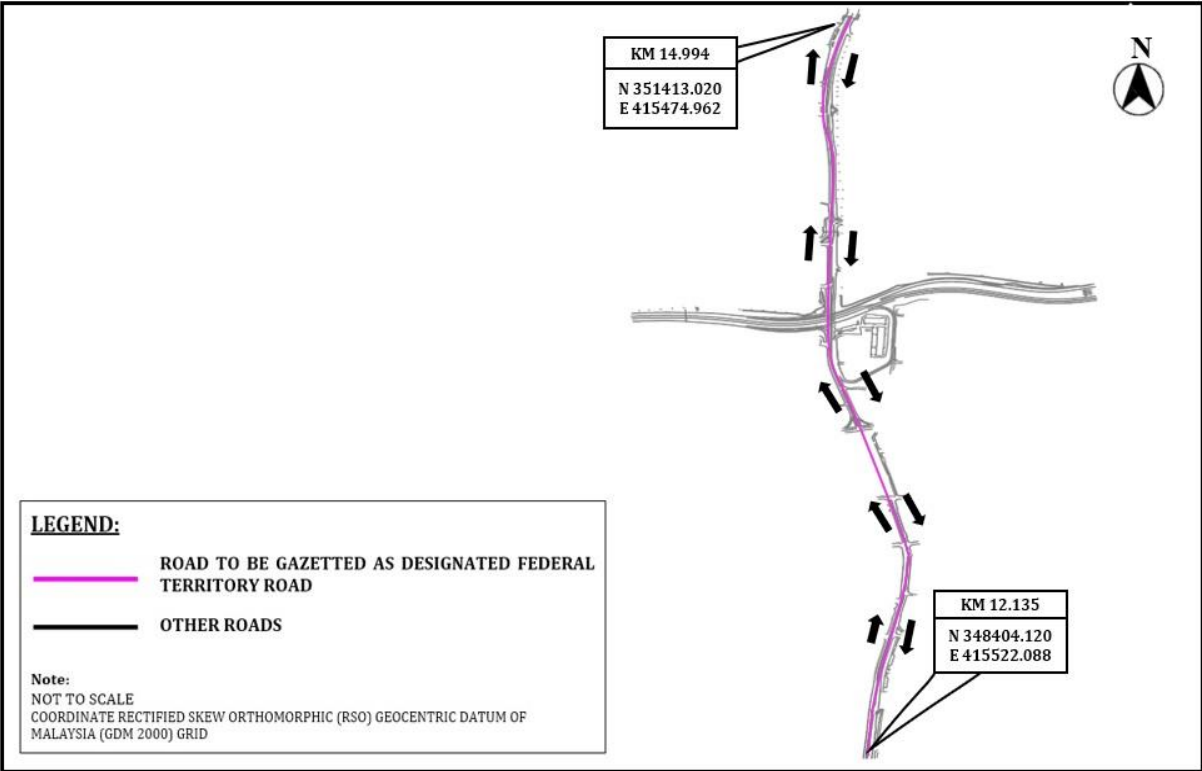
MAP 12 - MAIN LINE DOUBLE DECK NORTH BOUND



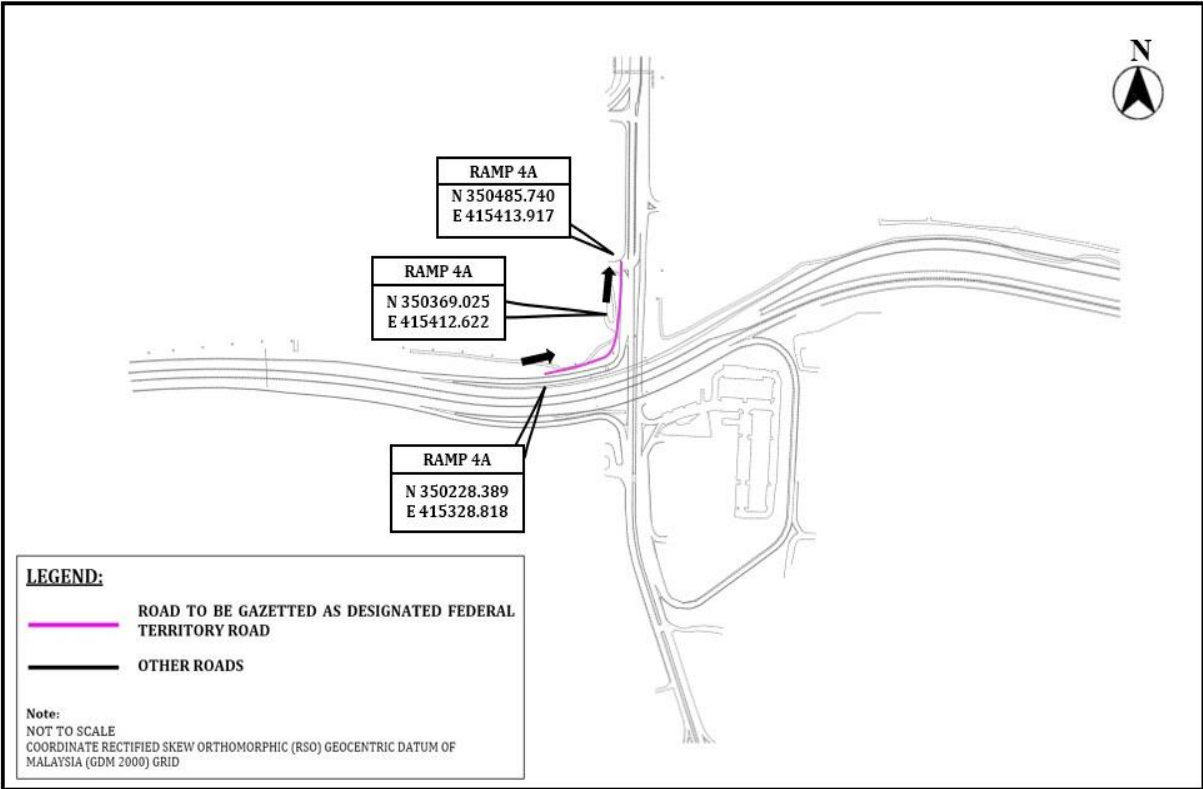
MAP 13 - MAIN LINE DOUBLE DECK NORTH BOUND



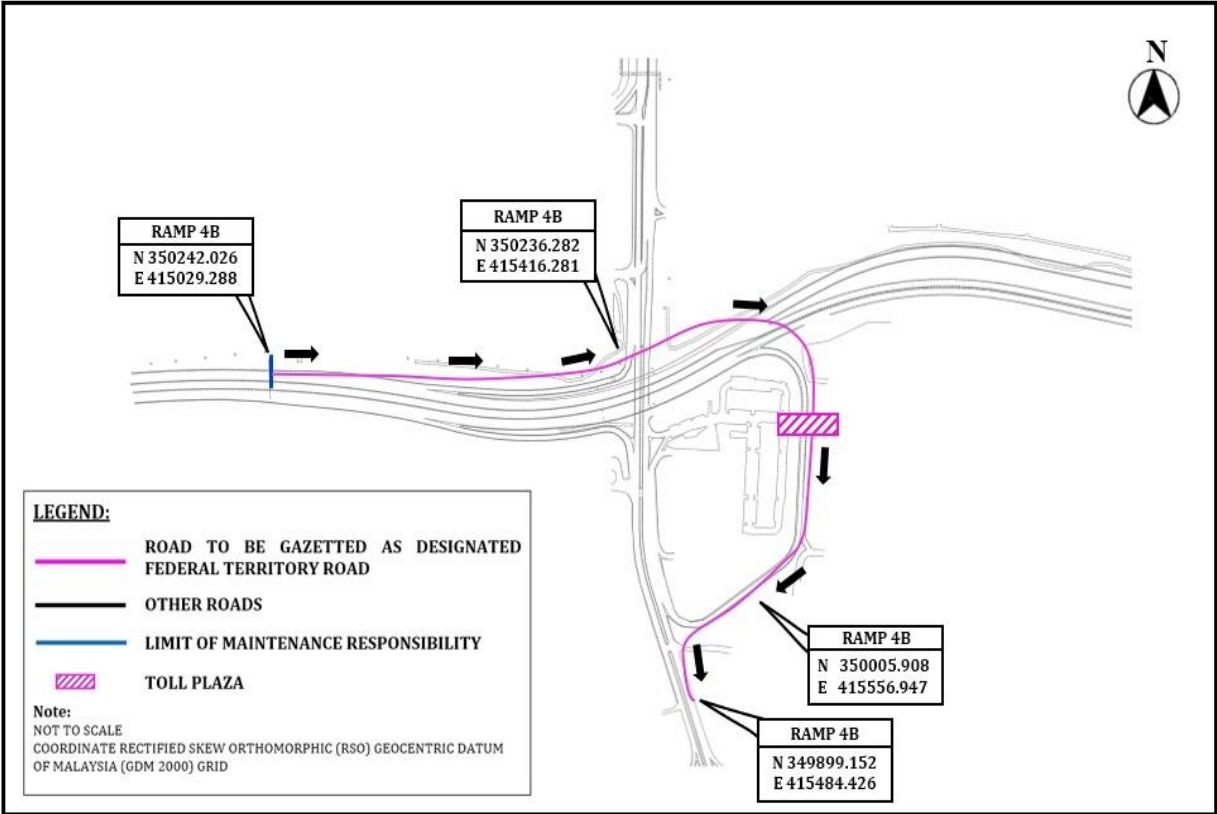
MAP 14 - MAIN LINE



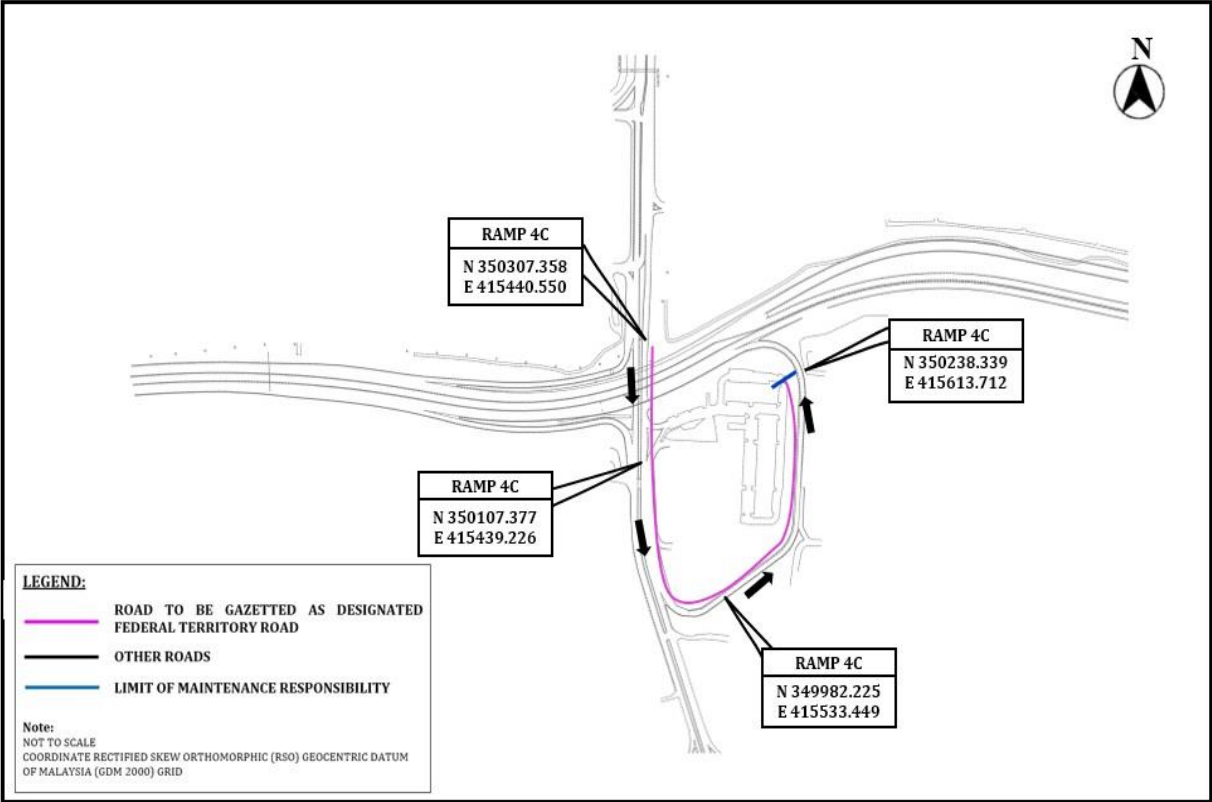
MAP 15 - AMPANG INTERCHANGE RAMP 4A



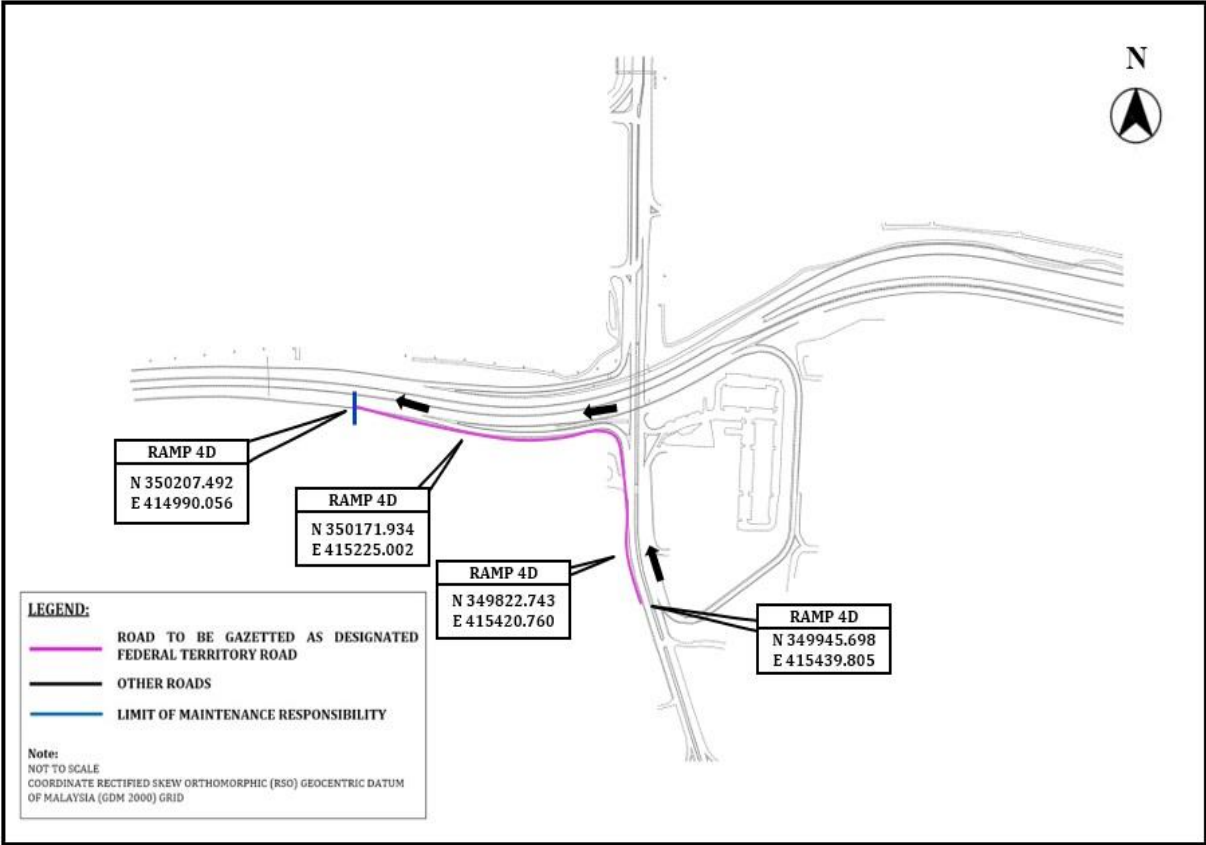
MAP 16 - AMPANG INTERCHANGE RAMP 4B



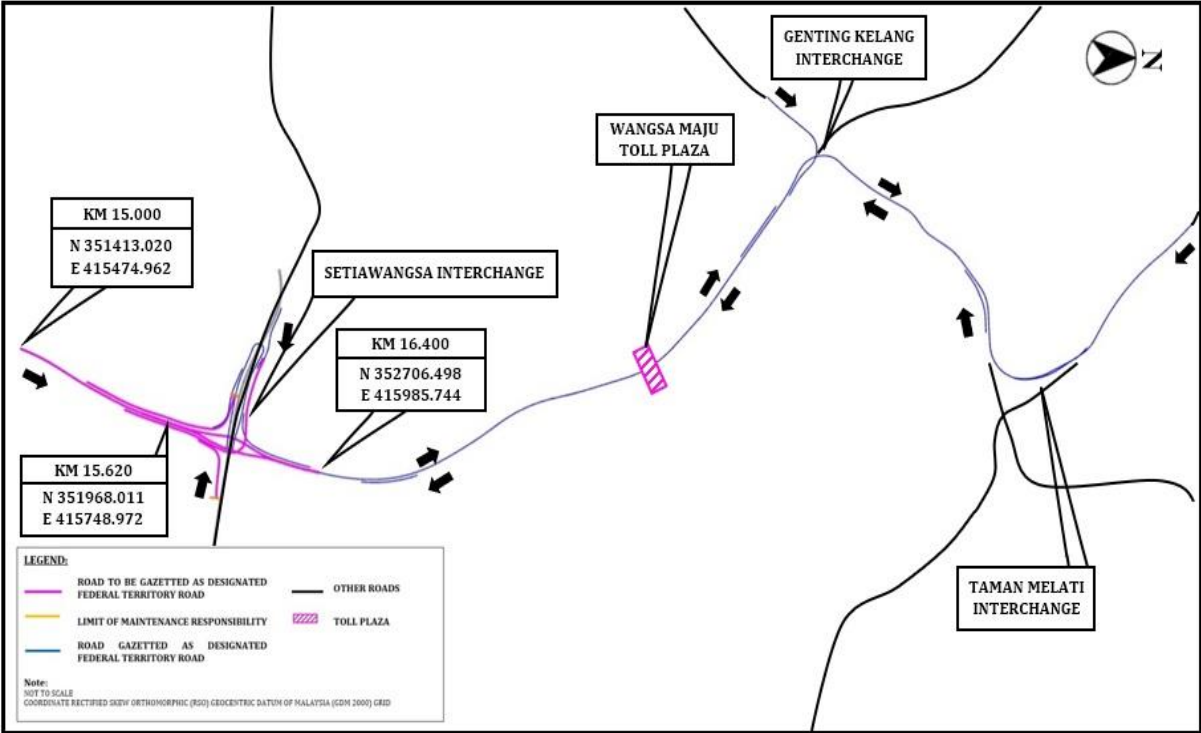
MAP 17 - AMPANG INTERCHANGE RAMP 4C



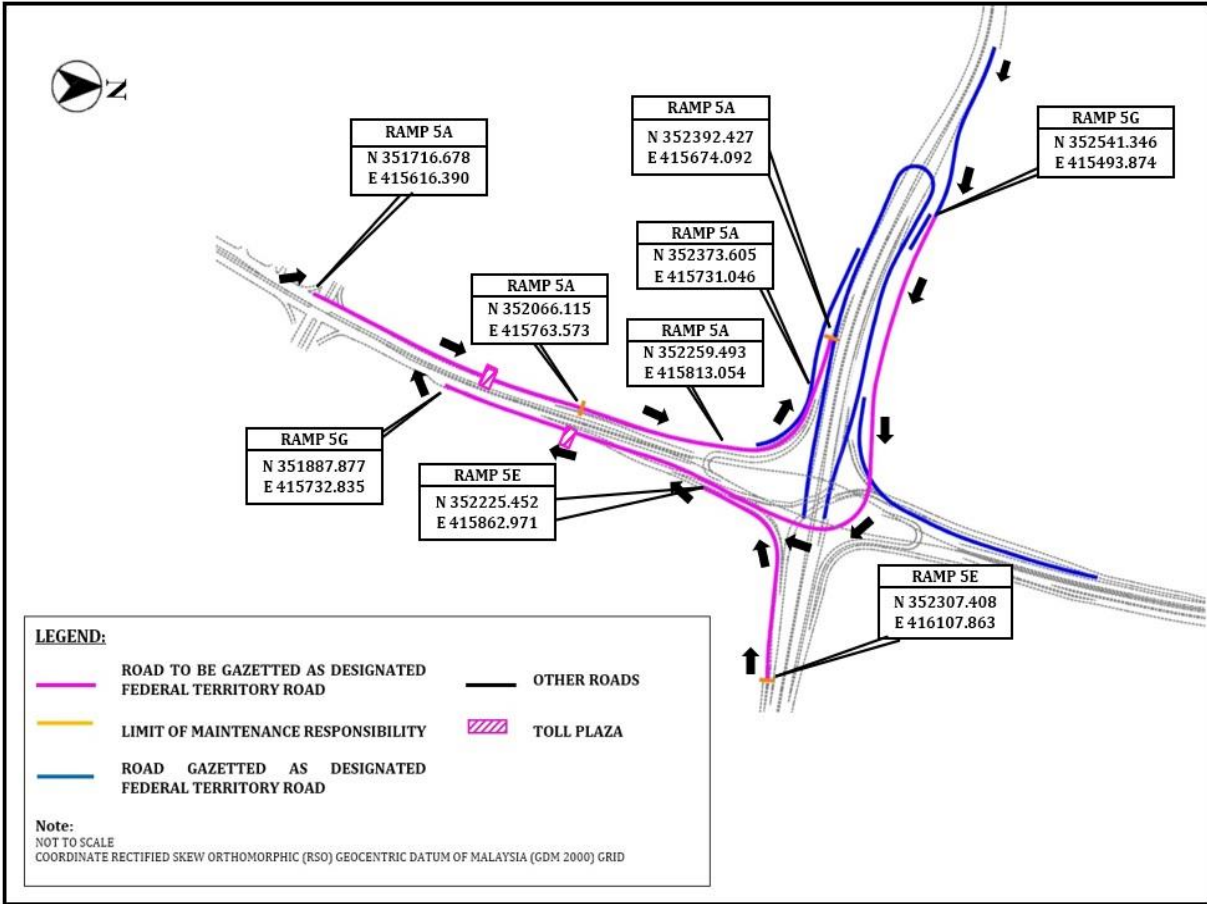
MAP 18 - AMPANG INTERCHANGE RAMP 4D



MAP 19 - MAIN LINE FROM SETIAWANGSA INTERCHANGE TO TAMAN MELATI INTERCHANGE



MAP 20 - SETIAWANGSA INTERCHANGE



Made 2 November 2023  
[KKR.PUU.110-1/7/44; PN(PU2)460/Jld. 129]

DATO SRI ALEXANDER NANTA LINGGI  
*Minister of Works*