



11 Jun 2025
11 June 2025
P.U. (A) 176

WARTA KERAJAAN PERSEKUTUAN

FEDERAL GOVERNMENT GAZETTE

PERINTAH JALAN-JALAN PERSEKUTUAN
(PENGURUSAN PERSENDIRIAN) (PUNGUTAN TOL)
(LEBUH RAYA PESISIRAN PANTAI BARAT
(TAIPING-BANTING)) (PINDAAN) 2025

*FEDERAL ROADS
(PRIVATE MANAGEMENT) (COLLECTION OF TOLLS)
(WEST COAST EXPRESSWAY (TAIPING-BANTING))
(AMENDMENT) ORDER 2025*

DISIARKAN OLEH/
PUBLISHED BY
JABATAN PEGUAM NEGARA/
ATTORNEY GENERAL'S CHAMBERS

AKTA JALAN-JALAN PERSEKUTUAN (PENGURUSAN PERSENDIRIAN) 1984

PERINTAH JALAN-JALAN PERSEKUTUAN (PENGURUSAN PERSENDIRIAN)
(PUNGUTAN TOL) (LEBUH RAYA PESISIRAN PANTAI BARAT (TAIPING-BANTING))
(PINDAAN) 2025

PADA menjalankan kuasa yang diberikan oleh seksyen 2 Akta Jalan-Jalan Persekutuan (Pengurusan Persendirian) 1984 [*Akta 306*], Menteri membuat perintah yang berikut:

Nama dan permulaan kuat kuasa

1. (1) Perintah ini bolehlah dinamakan **Perintah Jalan-Jalan Persekutuan (Pengurusan Persendirian) (Pungutan Tol) (Lebuh Raya Pesisiran Pantai Barat (Taiping-Banting)) (Pindaan) 2025**.

(2) Perintah ini mula berkuat kuasa pada 13 Jun 2025.

Pindaan perenggan 2

2. Perintah Jalan-Jalan Persekutuan (Pengurusan Persendirian) (Pungutan Tol) (Lebuh Raya Pesisiran Pantai Barat (Taiping-Banting)) 2020 [*P.U. (A) 14/2020*], yang disebut “Perintah ibu” dalam Perintah ini, dipinda dalam perenggan 2—

(a) dalam subperenggan (1)—

(i) dalam subsubperenggan (e), dengan memotong perkataan “dan” di hujung subsubperenggan itu;

(ii) dalam subsubperenggan (f), dengan menggantikan noktah di hujung subsubperenggan itu dengan perkataan “; dan”; dan

(iii) dengan memasukkan selepas subsubperenggan (f) subsubperenggan yang berikut:

“(g) kilometer 12.51 di koordinat U 324492.234, T 391350.504 Grid RSO Geosentrik (GDM 2000) dan berakhir di kilometer 19.43 di koordinat U 330516.392, T 388076.946 Grid RSO

Geosentrik (GDM 2000) (kedua-dua jarak diukur dari kilometer 0.0 Lebu Raya Pesisiran Pantai Barat (Taiping–Banting) di Persimpangan Bertingkat Banting) termasuklah Persimpangan Bertingkat SKVE, Plaza Tol SAE, Persimpangan Bertingkat SAE dan jalan-jalan sambungannya, iaitu suatu jarak sepanjang 6.92 kilometer.”; dan

- (b) dalam subperenggan (2), dengan menggantikan perkataan “Peta D dan Peta E” dengan perkataan “Peta D, Peta E dan Peta F”.

Pindaan Jadual Pertama

3. Perintah ibu dipinda dalam Jadual Pertama—

- (a) di bawah kepala Plaza Tol Keluar: Banting—

- (i) dalam teks bahasa Inggeris, dengan menggantikan kepala “Exit Toll: Banting” dengan kepala “Exit Toll Plaza: Banting”;
- (ii) berhubung dengan butiran 1. Ayer Hitam hingga 4. Pulau Indah, dengan menggantikan butir-butir dalam ruang (2) dengan butir-butir yang berikut:

(2) <i>Tempoh Operasi</i>
“10.6.2025- 19.12.2063
10.6.2025- 19.12.2063
10.6.2025- 19.12.2063
10.6.2025- 19.12.2063”

; dan

- (iii) dengan memasukkan selepas butiran 4. Pulau Indah dan butir-butir yang berhubungan dengannya butiran dan butir-butir yang berikut:

(1) <i>Plaza Tol Masuk</i>	(2) <i>Tempoh Operasi</i>	(3) <i>Tol Kena Dibayar (RM) Mengikut Kelas Kenderaan</i>				
		<i>Kelas 1</i>	<i>Kelas 2</i>	<i>Kelas 3</i>	<i>Kelas 4</i>	<i>Kelas 5</i>
"5. SAE	10.6.2025- 19.12.2063	3.53	7.06	10.59	1.76	2.64"

- (b) dengan memasukkan selepas kepala Plaza Tol Keluar: Banting, butiran dan butir-butir yang berhubungan dengannya kepala, butiran dan butir-butir yang berikut:

"Plaza Tol Keluar: SAE

(1) <i>Plaza Tol Masuk</i>	(2) <i>Tempoh Operasi</i>	(3) <i>Tol Kena Dibayar (RM) Mengikut Kelas Kenderaan</i>				
		<i>Kelas 1</i>	<i>Kelas 2</i>	<i>Kelas 3</i>	<i>Kelas 4</i>	<i>Kelas 5</i>
1. Ayer Hitam	10.6.2025- 19.12.2063	1.59	3.18	4.77	0.79	1.19
2. SKVE Saujana Putra	10.6.2025- 19.12.2063	1.59	3.18	4.77	0.79	1.19
3. Teluk Panglima Garang	10.6.2025- 19.12.2063	1.59	3.18	4.77	0.79	1.19
4. Pulau Indah	10.6.2025- 19.12.2063	1.59	3.18	4.77	0.79	1.19
5. Banting	10.6.2025- 19.12.2063	3.53	7.06	10.59	1.76	2.64

”; dan

- (c) dengan menggantikan kepala “Plaza Tol Keluar: Ayer Hitam/SKVE Saujana Putra/Teluk Panglima Garang/Ayer Hitam di Lebu Raya Lembah Klang Selatan (SKVE)”, butiran dan butir-butir yang berhubungan dengannya dengan kepala, butiran dan butir-butir yang berikut:

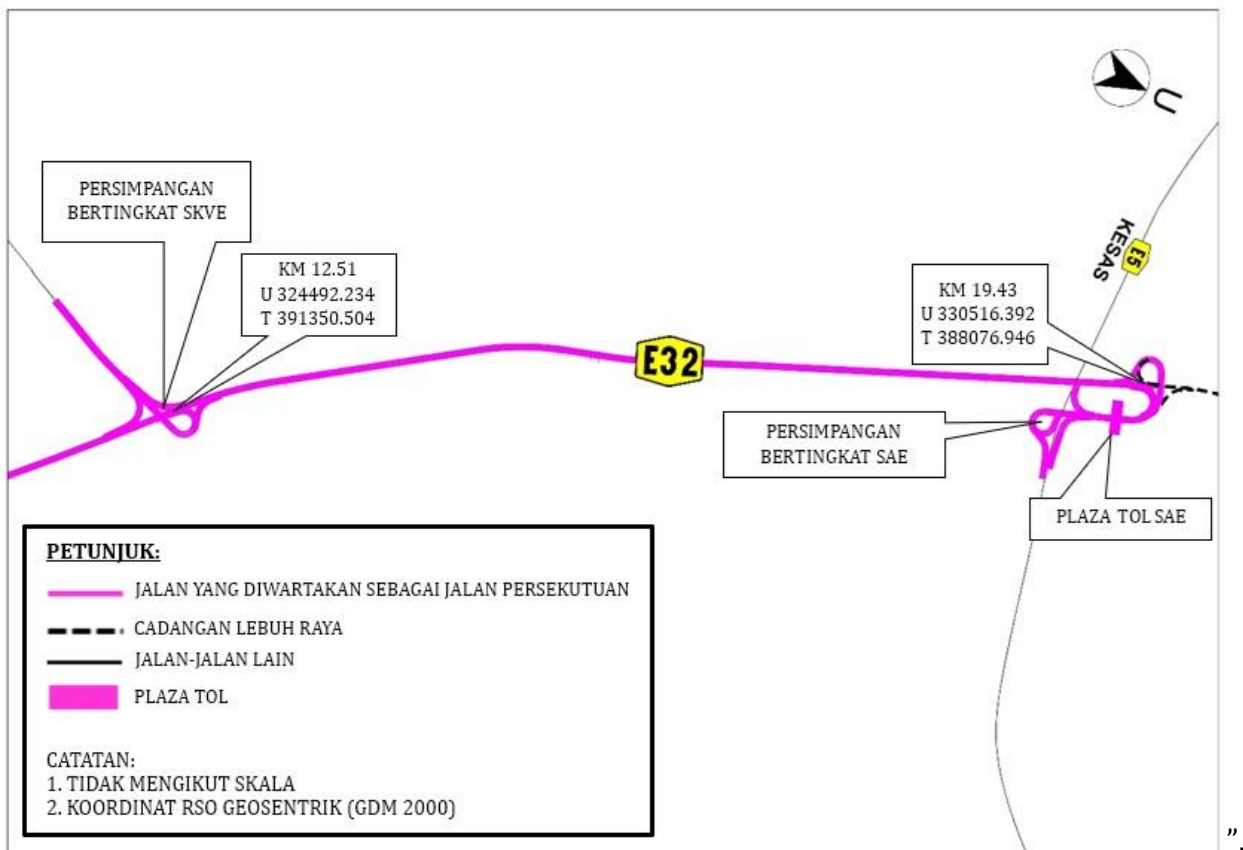
“Plaza Tol Keluar: Ayer Hitam/SKVE Saujana Putra/Teluk Panglima Garang/
Ayer Hitam di Lebu Raya Lembah Klang Selatan (SKVE)

(1) <i>Plaza Tol Masuk</i>	(2) <i>Tempoh Operasi</i>	(3) <i>Tol Kena Dibayar (RM) Mengikut Kelas Kenderaan</i>				
		<i>Kelas 1</i>	<i>Kelas 2</i>	<i>Kelas 3</i>	<i>Kelas 4</i>	<i>Kelas 5</i>
1. Banting	10.6.2025- 19.12.2063	2.34	4.69	7.03	1.17	1.76
2. SAE	10.6.2025- 19.12.2063	1.59	3.18	4.77	0.79	1.19

Pindaan Jadual Kedua

4. Perintah ibu dipinda dalam Jadual Kedua dengan memasukkan selepas Peta E peta yang berikut:

“PETA F
 PERSIMPANGAN BERTINGKAT SKVE-PERSIMPANGAN BERTINGKAT SAE



Dibuat 9 Jun 2025
 [KKR.PUU.110-1/6/20 Jld.2; PN(PU2)426/JLD.73]

DATO SRI ALEXANDER NANTA LINGGI
Menteri Kerja Raya

FEDERAL ROADS (PRIVATE MANAGEMENT) ACT 1984

FEDERAL ROADS (PRIVATE MANAGEMENT) (COLLECTION OF TOLLS)
(WEST COAST EXPRESSWAY (TAIPING-BANTING)) (AMENDMENT) ORDER 2025

IN exercise of the powers conferred by section 2 of the Federal Roads (Private Management) Act 1984 [*Act 306*], the Minister makes the following order:

Citation and commencement

1. (1) This order may be cited as the **Federal Roads (Private Management) (Collection of Tolls) (West Coast Expressway (Taiping-Banting)) (Amendment) Order 2025**.

(2) This Order comes into operation on 13 June 2025.

Amendment of paragraph 2

2. The Federal Roads (Private Management) (Collection of Tolls) (West Coast Expressway (Taiping-Banting)) Order 2020 [*P.U. (A) 14/2020*], which is referred to as the “principal Order” in this Order, is amended in paragraph 2—

(a) in subparagraph (1)—

(i) in subparagraph (e), by deleting the word “and” at the end of the subparagraph;

(ii) in subparagraph (f), by substituting for the full stop at the end of the subparagraph the words “; and”; and

(iii) by inserting after subparagraph (f) the following subparagraph:

“(g) kilometre 12.51 at coordinates N 324492.234, E 391350.504 of the RSO Geocentric (GDM 2000) Grid and ending at kilometre 19.43 at coordinates N 330516.392, E 388076.946 of the RSO Geocentric

(GDM 2000) Grid (both distances measured from kilometre 0.0 of the West Coast Expressway (Taiping-Banting) at the Banting Interchange) including SKVE Interchange, SAE Toll Plaza, SAE Interchange and its link roads, being a distance of 6.92 kilometre.”; and

- (b) in subparagraph (2), by substituting for the words “Map D and Map E” the words “Map D, Map E and Map F”.

Amendment of First Schedule

3. The principal Order is amended in the First Schedule—

- (a) under the heading of Exit Toll: Banting—

- (i) in the English language text, by substituting for the heading “Exit Toll: Banting” the heading “Exit Toll Plaza: Banting”;
- (ii) in relation to items 1. Ayer Hitam until 4. Pulau Indah, by substituting for particulars in column (2) the following particulars:

(2) <i>Period of Operation</i>
“10.6.2025- 19.12.2063
10.6.2025- 19.12.2063
10.6.2025- 19.12.2063
10.6.2025- 19.12.2063”

; and

- (iii) by inserting after item 4. Pulau Indah and the particulars relating to it the following item and particulars:

(1) <i>Entry Toll Plaza</i>	(2) <i>Period of Operation</i>	(3) <i>Toll Payable (RM) According to Classes of Vehicles</i>				
		<i>Class 1</i>	<i>Class 2</i>	<i>Class 3</i>	<i>Class 4</i>	<i>Class 5</i>
"5. SAE	10.6.2025-19.12.2063	3.53	7.06	10.59	1.76	2.64"

- (b) by inserting after the heading of Exit Toll Plaza: Banting, items and particulars relating to it the following heading, items and particulars:

"Exit Toll Plaza: SAE

(1) <i>Entry Toll Plaza</i>	(2) <i>Period of Operation</i>	(3) <i>Toll Payable (RM) According to Classes of Vehicles</i>				
		<i>Class 1</i>	<i>Class 2</i>	<i>Class 3</i>	<i>Class 4</i>	<i>Class 5</i>
1. Ayer Hitam	10.6.2025-19.12.2063	1.59	3.18	4.77	0.79	1.19
2. SKVE Saujana Putra	10.6.2025-19.12.2063	1.59	3.18	4.77	0.79	1.19
3. Teluk Panglima Garang	10.6.2025-19.12.2063	1.59	3.18	4.77	0.79	1.19
4. Pulau Indah	10.6.2025-19.12.2063	1.59	3.18	4.77	0.79	1.19
5. Banting	10.6.2025-19.12.2063	3.53	7.06	10.59	1.76	2.64

”; and

- (c) by substituting for the heading “Exit Toll Plaza: Ayer Hitam/SKVE Saujana Putra/Teluk Panglima Garang/Ayer Hitam at South Klang Valley Expressway (SKVE)”, item and particulars relating to it the following heading, items and particulars:

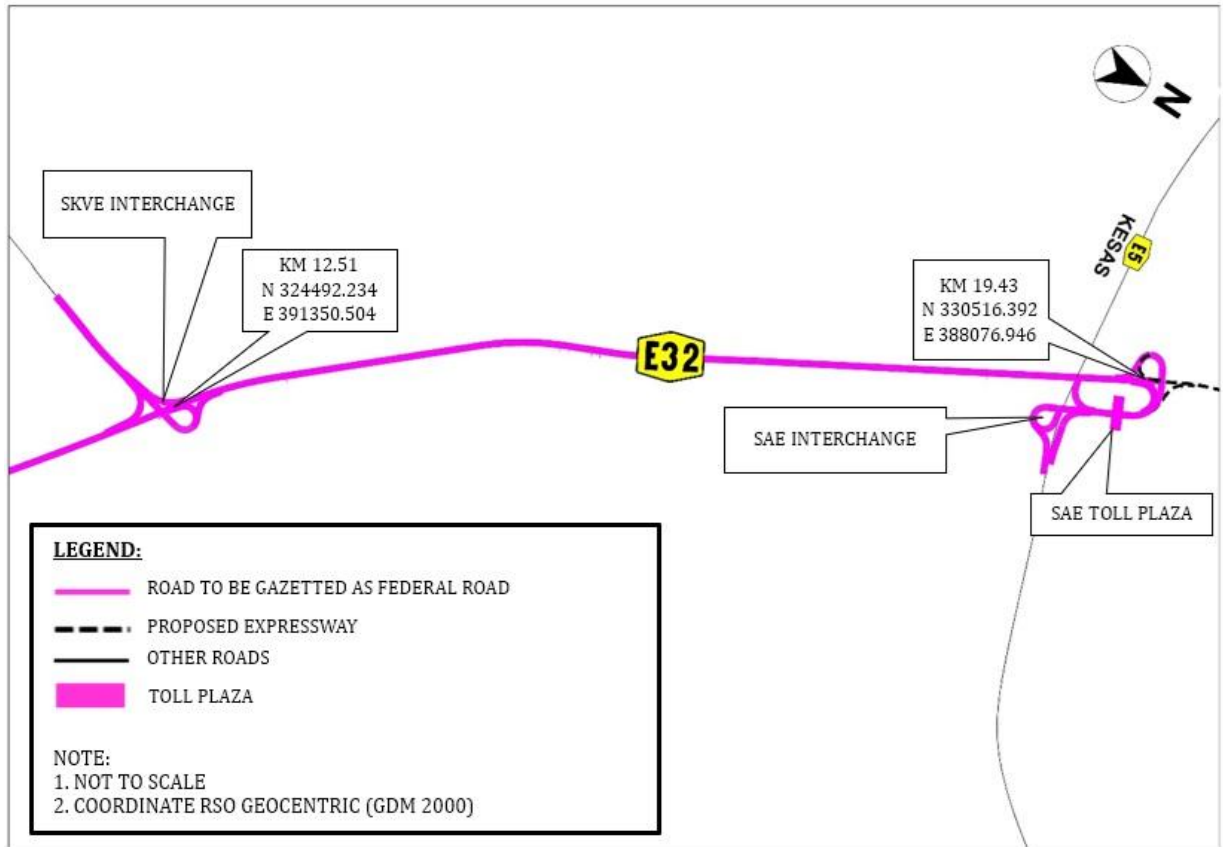
“Exit Toll Plaza: Ayer Hitam/SKVE Saujana Putra/Teluk Panglima Garang/Ayer Hitam at South Klang Valley Expressway (SKVE)

(1) <i>Entry Toll Plaza</i>	(2) <i>Period of Operation</i>	(3) <i>Toll Payable (RM) According to Classes of Vehicles</i>				
		<i>Class 1</i>	<i>Class 2</i>	<i>Class 3</i>	<i>Class 4</i>	<i>Class 5</i>
1. Banting	10.6.2025-19.12.2063	2.34	4.69	7.03	1.17	1.76
2. SAE	10.6.2025-19.12.2063	1.59	3.18	4.77	0.79	1.19

Amendment of Second Schedule

4. The principal Order is amended in the Second Schedule by inserting after Map E the following map:

“MAP F
SKVE INTERCHANGE-SAE INTERCHANGE



Made 9 June 2025
[KKR.PUU.110-1/6/20]ld.2; PN(PU2)426/JLD.73]

DATO SRI ALEXANDER NANTA LINGGI
Minister of Works