



21 Disember 2021  
21 December 2021  
P.U. (A) 456

WARTA KERAJAAN PERSEKUTUAN

*FEDERAL GOVERNMENT  
GAZETTE*

PERINTAH HAD LAJU  
(LEBUH RAYA SETIAWANGSA-PANTAI) 2021

*SPEED LIMIT  
(SETIAWANGSA-PANTAI EXPRESSWAY) ORDER 2021*

DISIARKAN OLEH/  
*PUBLISHED BY*  
JABATAN PEGUAM NEGARA/  
*ATTORNEY GENERAL'S CHAMBERS*

AKTA PENGANGKUTAN JALAN 1987

PERINTAH HAD LAJU (LEBUH RAYA SETIAWANGSA-PANTAI) 2021

PADA menjalankan kuasa yang diberikan oleh subseksyen 69(2) Akta Pengangkutan Jalan 1987 [*Akta 333*], Menteri membuat perintah yang berikut:

**Nama dan permulaan kuat kuasa**

1. (1) Perintah ini bolehlah dinamakan **Perintah Had Laju (Lebuh Raya Setiawangsa-Pantai) 2021**.

(2) Perintah ini mula berkuat kuasa pada 22 Disember 2021.

**Larangan**

2. (1) Pemanduan kenderaan motor dengan kelajuan yang lebih daripada kelajuan yang dinyatakan dalam ruang (2) Jadual Pertama di atas jalan yang dinyatakan dalam ruang (1) dilarang.

(2) Jalan dengan had laju yang dinyatakan dalam subperenggan (1) ditunjukkan dalam Peta 1, Peta 2, Peta 3, Peta 4 dan Peta 5 dalam Jadual Kedua.

## JADUAL PERTAMA

[Subperenggan 2(1)]

(1) <i>Jalan</i>	(2) <i>Had Laju (km/j)</i>
Bahagian jalan yang dikenali sebagai Lebuhraya Setiawangsa-Pantai yang bermula dari—	
(a) Laluan utama di kilometer 16.40 di koordinat U 352706.499, T 415985.744 Grid Bentuk Benar Serong di Tepi (RSO) Geosentrik (GDM 2000) dan berakhir di kilometer 17.90 di koordinat U 354118.558, T 415623.487 Grid RSO Geosentrik (GDM 2000) arah utara dan arah selatan;	80
(b) Laluan utama di kilometer 17.90 di koordinat U 354118.558, T 415623.487 Grid RSO Geosentrik (GDM 2000) dan berakhir di kilometer 20.67 di koordinat U 355959.040, T 415610.971 Grid RSO Geosentrik (GDM 2000) arah utara dan arah selatan;	50
(c) Persimpangan Bertingkat Setiawangsa dari—	
(i) Had Sempadan Penyenggaraan di koordinat U 352359.060, T 415873.406 Grid RSO Geosentrik (GDM 2000) dan koordinat U 352293.922, T 415809.708 Grid RSO Geosentrik (GDM 2000) dan berakhir di koordinat U 352473.862, T 415482.061 Grid RSO Geosentrik (GDM 2000);	40

- |       |   |    |
|-------|---|----|
| (ii)  | koordinat U 352473.862, T 415482.061<br>Grid RSO Geosentrik (GDM 2000) dan<br>berakhir di koordinat U 352517.273,<br>T 415504.069 Grid RSO Geosentrik<br>(GDM 2000);  | 30 |
| (iii) | koordinat U 352517.273, T 415504.069<br>Grid RSO Geosentrik (GDM 2000) dan<br>berakhir di Had Sempadan Penyenggaraan<br>di koordinat U 352382.460, T 415903.261<br>Grid RSO Geosentrik (GDM 2000);  | 40 |
| (iv)  | Had Sempadan Penyenggaraan<br>di koordinat U 352606.527, T 415305.853<br>Grid RSO Geosentrik (GDM 2000) dan<br>koordinat U 352517.273, T 415504.069<br>Grid RSO Geosentrik (GDM 2000) dan<br>berakhir di koordinat U 352738.739,<br>T 415978.828 Grid RSO Geosentrik<br>(GDM 2000); dan | 40 |
| (v)   | koordinat U 353227.262, T 416014.055<br>Grid RSO Geosentrik (GDM 2000) dan<br>berakhir di Had Sempadan Penyenggaraan<br>di koordinat U 352970.317, T 416040.872<br>Grid RSO Geosentrik (GDM 2000);  | 40 |
| (d)   | Persimpangan Bertingkat Genting Kelang dari—  |    |
| (i)   | koordinat U 354705.953, T 415097.575<br>Grid RSO Geosentrik (GDM 2000) dan<br>berakhir di Had Sempadan Penyenggaraan  | 40 |

di koordinat U 354863.737, T 414890.936  
Grid RSO Geosentrik (GDM 2000); dan

- (ii) Had Sempadan Penyenggaraan 50  
di koordinat U 354830.156, T 414422.833  
Grid RSO Geosentrik (GDM 2000) dan  
berakhir di koordinat U 354928.721,  
T 414838.932 Grid RSO Geosentrik  
(GDM 2000);

(e) Tanjakan Masuk Genting Kelang dari—

- (i) Had Sempadan Penyenggaraan 40  
di koordinat U 355827.144, T 415418.880  
Grid RSO Geosentrik (GDM 2000) dan  
berakhir di koordinat U 355730.512,  
T 415154.010 Grid RSO Geosentrik  
(GDM 2000); dan

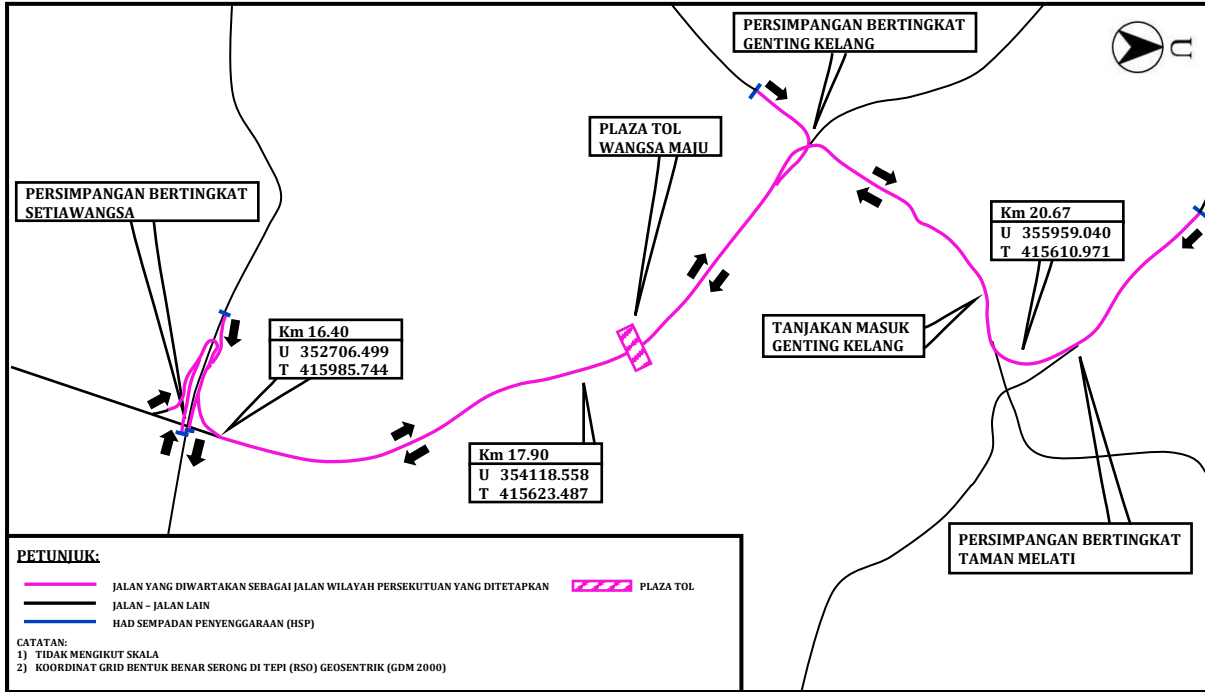
(f) Persimpangan Bertingkat Taman Melati dari—

- (i) koordinat U 355959.278, T 415610.000 50  
Grid RSO Geosentrik (GDM 2000) dan  
berakhir di Had Sempadan Penyenggaraan  
di koordinat U 356287.209, T 415483.768  
Grid RSO Geosentrik (GDM 2000); dan
- (ii) Had Sempadan Penyenggaraan di 50  
koordinat U 356774.281, T 414957.701  
Grid RSO Geosentrik (GDM 2000) dan  
berakhir di koordinat U 355958.799,  
T 415611.942 Grid RSO Geosentrik  
(GDM 2000).

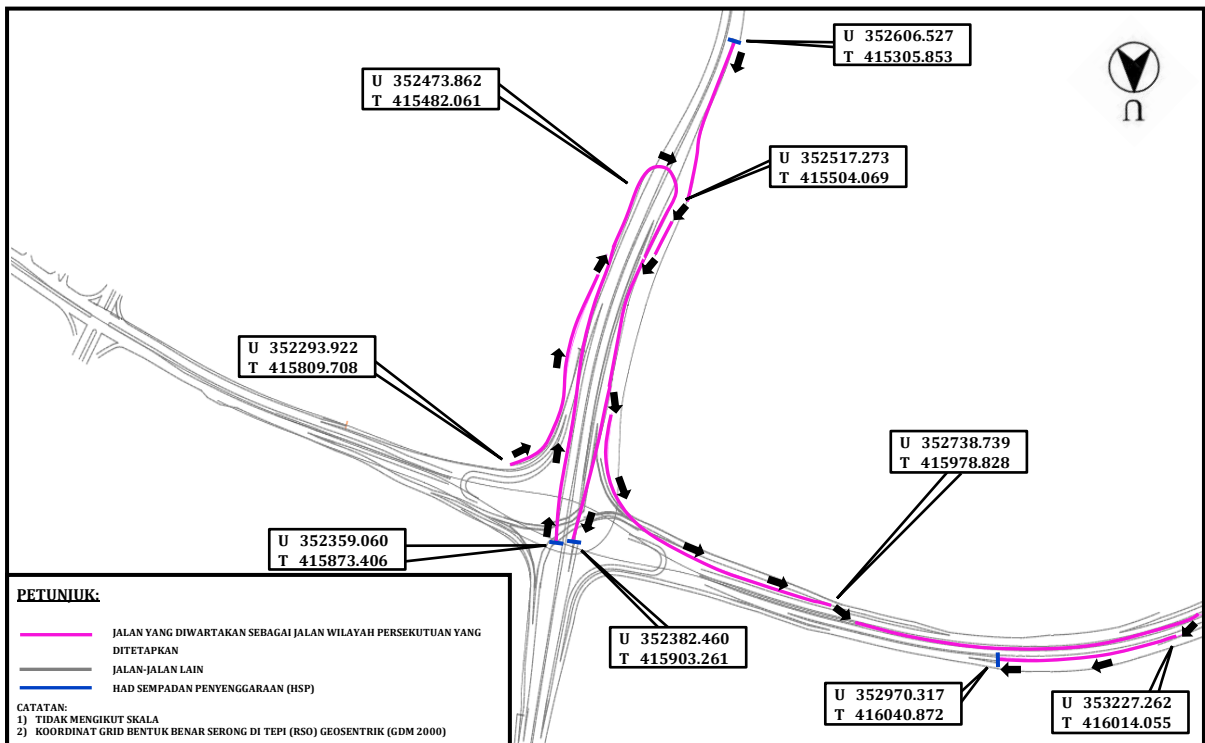
JADUAL KEDUA

[Subperenggan 2(2)]

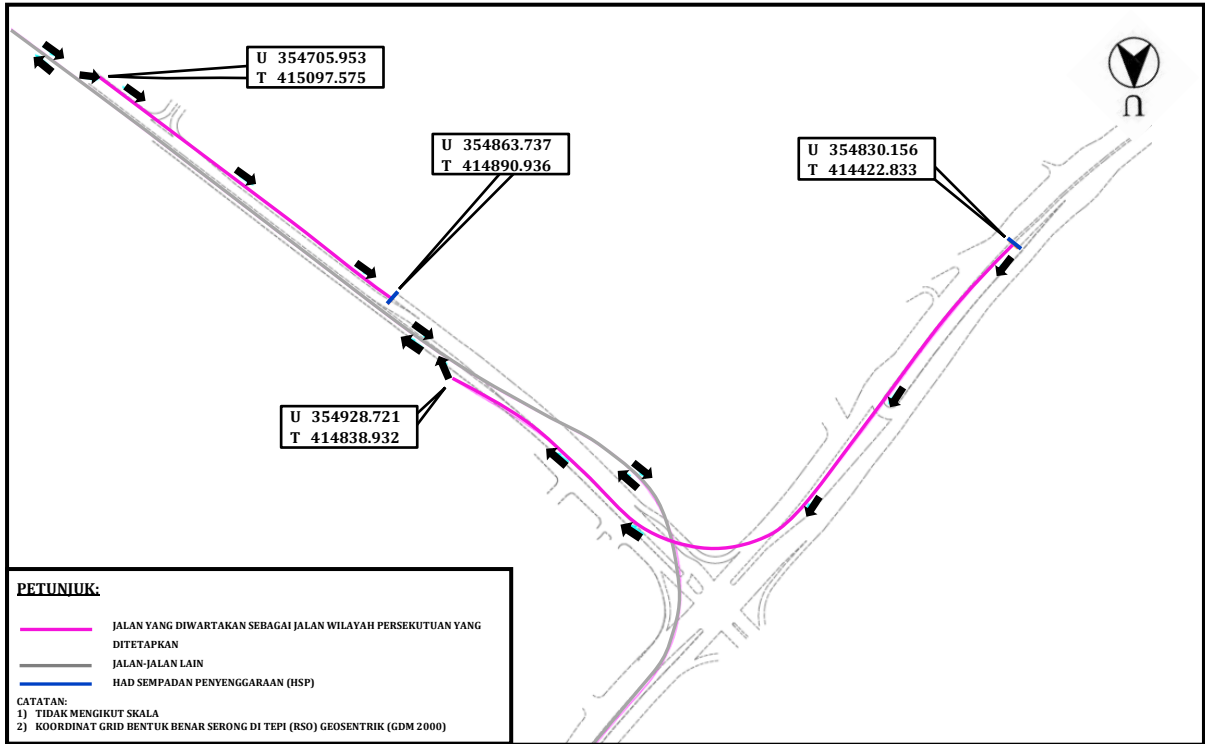
PETA 1 – LALUAN UTAMA PERSIMPANGAN BERTINGKAT SETIAWANGSA KE PERSIMPANGAN BERTINGKAT TAMAN MELATI



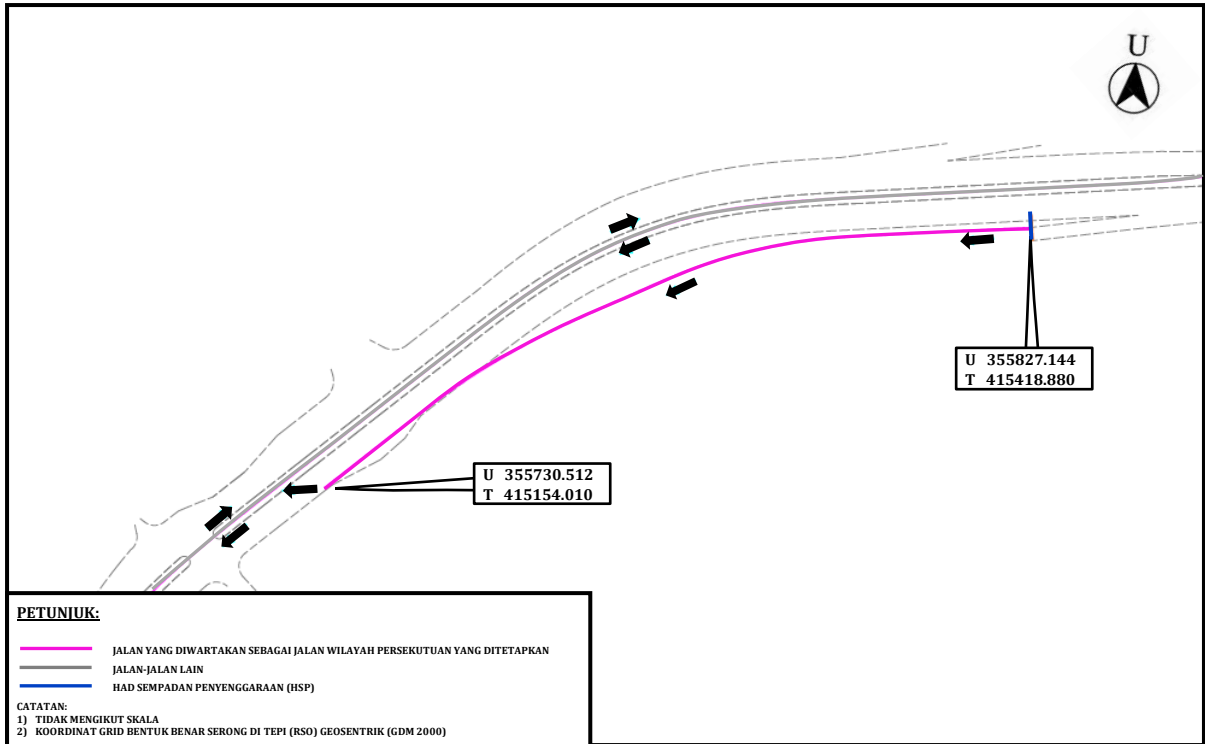
PETA 2 – PERSIMPANGAN BERTINGKAT SETIAWANGSA



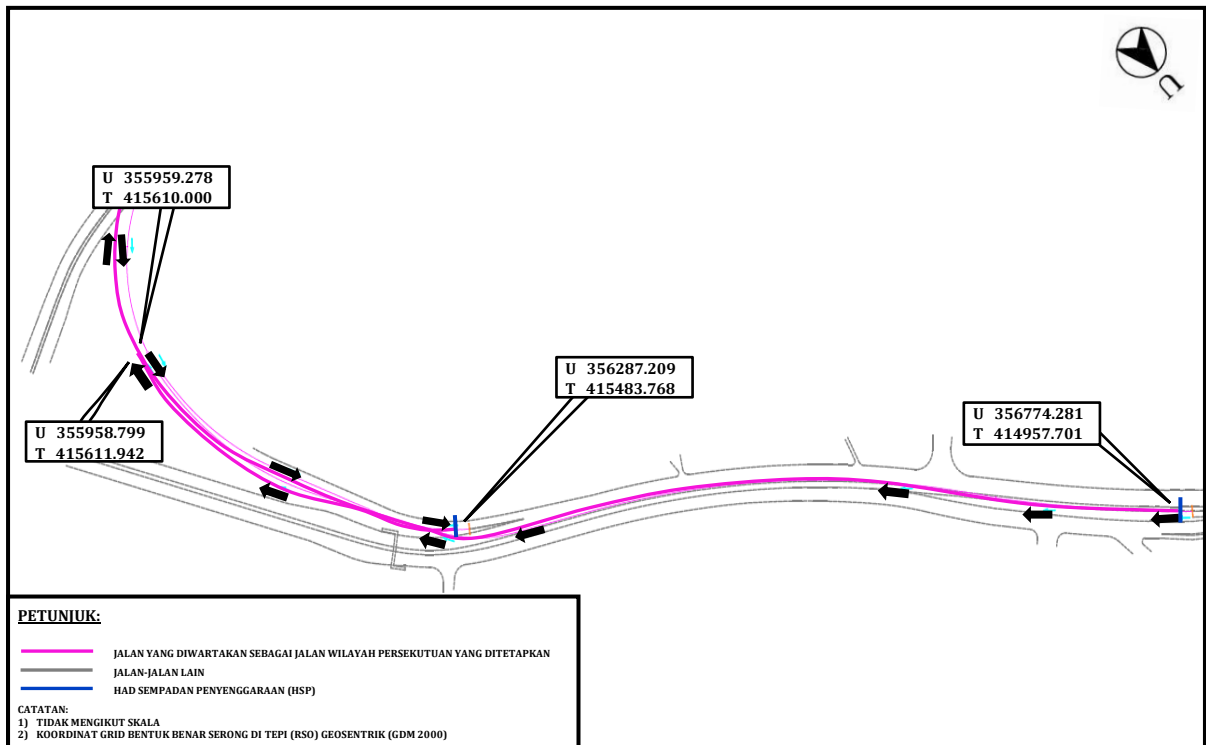
PETA 3 – PERSIMPANGAN BERTINGKAT GENTING KELANG



PETA 4 – TANJAKAN MASUK GENTING KELANG



PETA 5 – PERSIMPANGAN BERTINGKAT TAMAN MELATI



Dibuat 20 Disember 2021  
[KKR.PUU.110-1/6/; PN(PU2)460/Jld.110]

DATO' SRI HAJI FADILLAH BIN HAJI YUSOF  
*Menteri Kanan Kerja Raya*

ROAD TRANSPORT ACT 1987

SPEED LIMIT (SETIAWANGSA-PANTAI EXPRESSWAY) ORDER 2021

IN exercise of the powers conferred by subsection 69(2) of the Road Transport Act 1987 [Act 333], the Minister makes the following order:

**Citation and commencement**

1. (1) This order may be cited as the **Speed Limit (Setiawangsa-Pantai Expressway) Order 2021**.

(2) This Order comes into operation on 22 December 2021.

**Prohibition**

2. (1) The driving of motor vehicles at a speed greater than the speed specified in column (2) of the First Schedule on the road specified in column (1) is prohibited.

(2) The road with speed limit specified under subparagraph (1) is shown on Map 1, Map 2, Map 3, Map 4 and Map 5 in the Second Schedule.

## FIRST SCHEDULE

## [Subparagraph 2(1)]

(1) <i>Road</i>	(2) <i>Speed limit (km/h)</i>
The part of the road known as Setiawangsa-Pantai Expressway commencing from—	
(a) Main line at kilometre 16.40 at coordinates N 352706.499, E 415985.744 of the Rectified Skew Orthomorphic (RSO) Geocentric (GDM 2000) Grid and ending at kilometre 17.90 at coordinates N 354118.558, E 415623.487 of the RSO Geocentric (GDM 2000) Grid north bound and south bound;	80
(b) Main line at kilometre 17.90 at coordinates N 354118.558, E 415623.487 of the RSO Geocentric (GDM 2000) Grid and ending at kilometre 20.67 at coordinates N 355959.040, E 415610.971 of the RSO Geocentric (GDM 2000) Grid north bound and south bound;	50
(c) the Setiawangsa Interchange from—	
(i) the Limit of Maintenance Responsibility at coordinates N 352359.060, E 415873.406 of the RSO Geocentric (GDM 2000) Grid and coordinates N 352293.922, E 415809.708 of the RSO Geocentric (GDM 2000) Grid and ending at coordinates N 352473.862,	40

- E 415482.061 of the RSO Geocentric (GDM 2000) Grid;
- (ii) coordinates N 352473.862, E 415482.061 of the RSO Geocentric (GDM 2000) Grid and ending at coordinates N 352517.273, E 415504.069 of the RSO Geocentric (GDM 2000) Grid; 30
- (iii) coordinates N 352517.273, E 415504.069 of the RSO Geocentric (GDM 2000) Grid and ending at Limit of Maintenance Responsibility at coordinates N 352382.460, E 415903.261 of the RSO Geocentric (GDM 2000) Grid; 40
- (iv) the Limit of Maintenance Responsibility at coordinates N 352606.527, E 415305.853 of the RSO Geocentric (GDM 2000) Grid and coordinates N 352517.273, E 415504.069 of the RSO Geocentric (GDM 2000) Grid ending at coordinates N 352738.739, E 415978.828 of the RSO Geocentric (GDM 2000) Grid; and 40
- (v) coordinates N 353227.262, E 416014.055 of the RSO Geocentric (GDM 2000) Grid and ending at Limit of Maintenance Responsibility at coordinates N 352970.317, E 416040.872 of the RSO Geocentric (GDM 2000) Grid; 40

- (d) the Genting Kelang Interchange from—
- (i) coordinates N 354705.953, E 415097.575 of the RSO Geocentric (GDM 2000) Grid and ending at Limit of Maintenance Responsibility at coordinates N 354863.737, E 414890.936 of the (RSO) Geocentric (GDM 2000) Grid; and 40
  - (ii) the Limit of Maintenance Responsibility at coordinates N 354830.156, E 414422.833 of the RSO Geocentric (GDM 2000) Grid and ending at coordinates N 354928.721, E 414838.932 of the RSO Geocentric (GDM 2000) Grid; 50
- (e) Genting Kelang On Ramp from—
- (i) the Limit of Maintenance Responsibility at coordinates N 355827.144, E 415418.880 of the RSO Geocentric (GDM 2000) Grid and ending at coordinates N 355730.512, E 415154.010 of the RSO Geocentric (GDM 2000) Grid; and 40
- (f) Taman Melati Interchange from—
- (i) coordinates N 355959.278, E 415610.000 of the RSO Geocentric (GDM 2000) Grid and ending at Limit of Maintenance Responsibility at coordinates 50

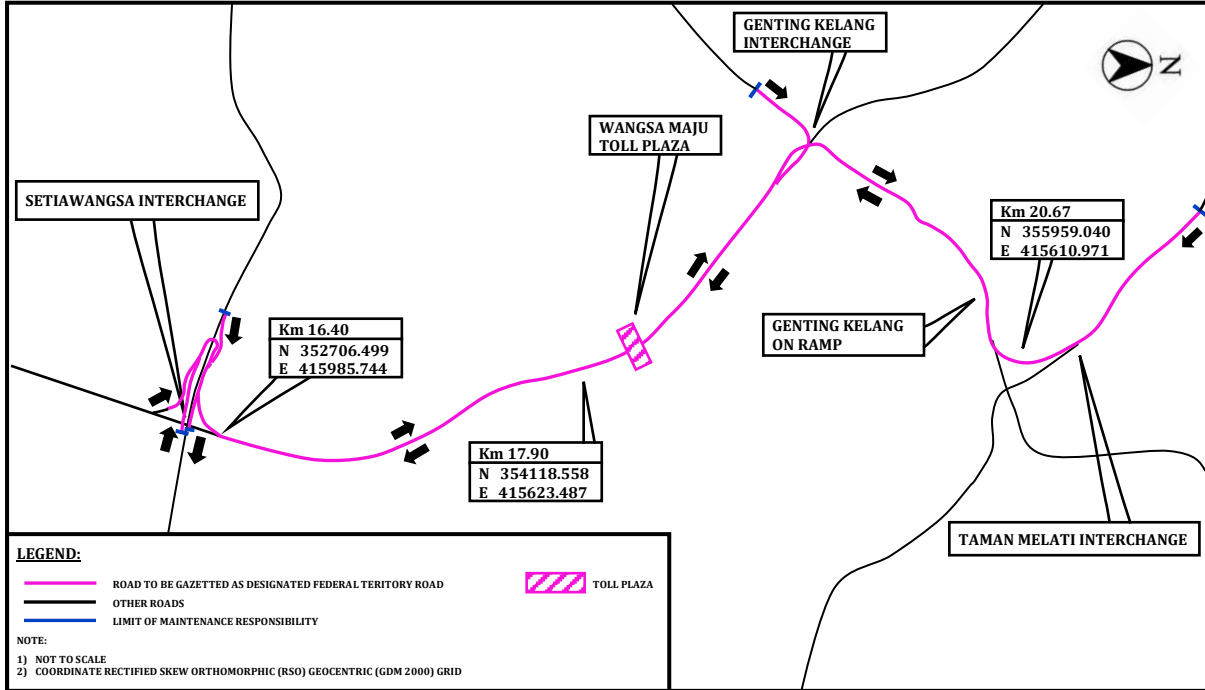
N 356287.209, E 415483.768 of the RSO Geocentric (GDM 2000) Grid; and

- (ii) the Limit of Maintenance Responsibility at 50  
coordinates N 356774.281, E 414957.701  
of the RSO Geocentric (GDM 2000) Grid and  
ending at coordinates N 355958.799,  
E 415611.942 of the RSO Geocentric  
(GDM 2000) Grid.

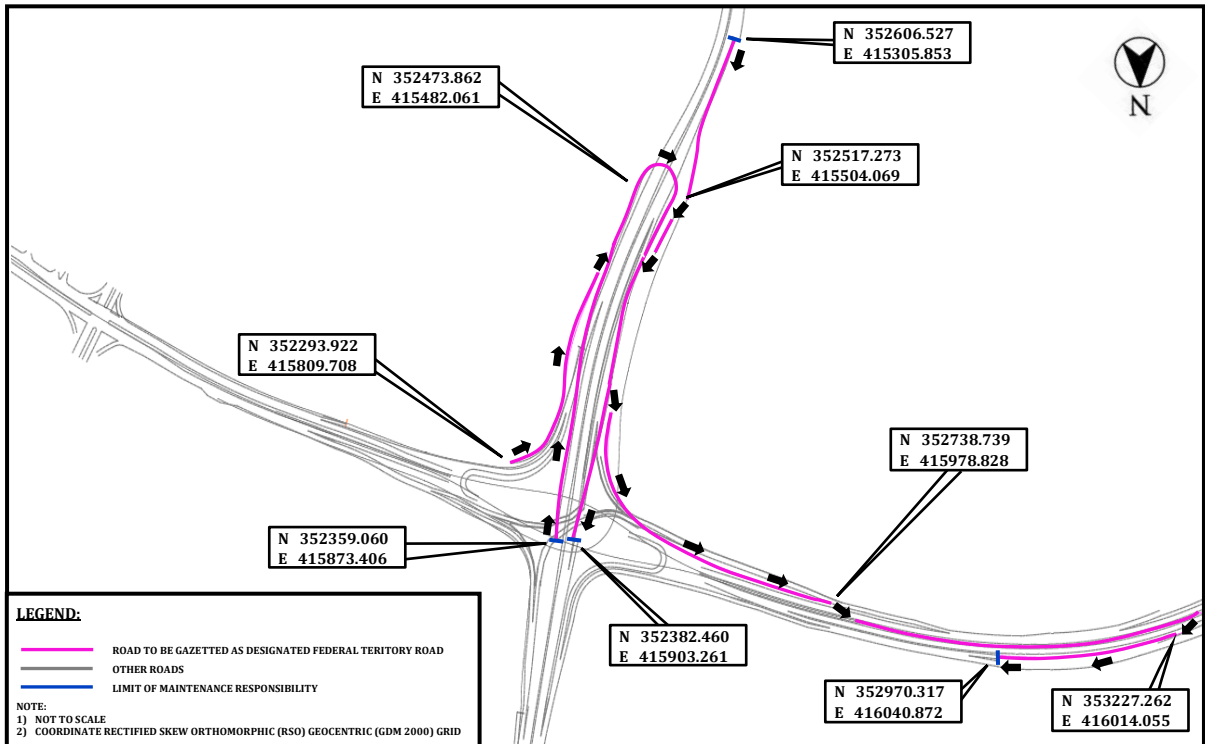
SECOND SCHEDULE

[Subparagraph 2(2)]

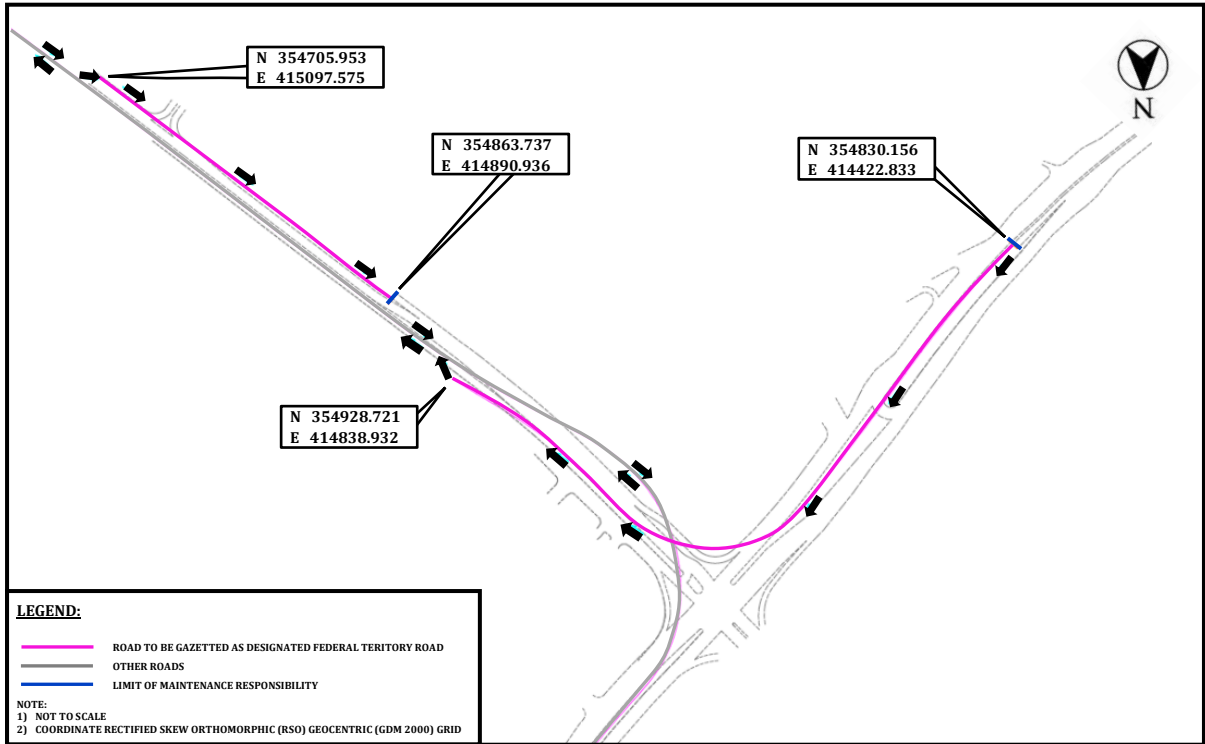
MAP 1 – MAIN LINE SETIAWANGSA INTERCHANGE TO TAMAN MELATI INTERCHANGE



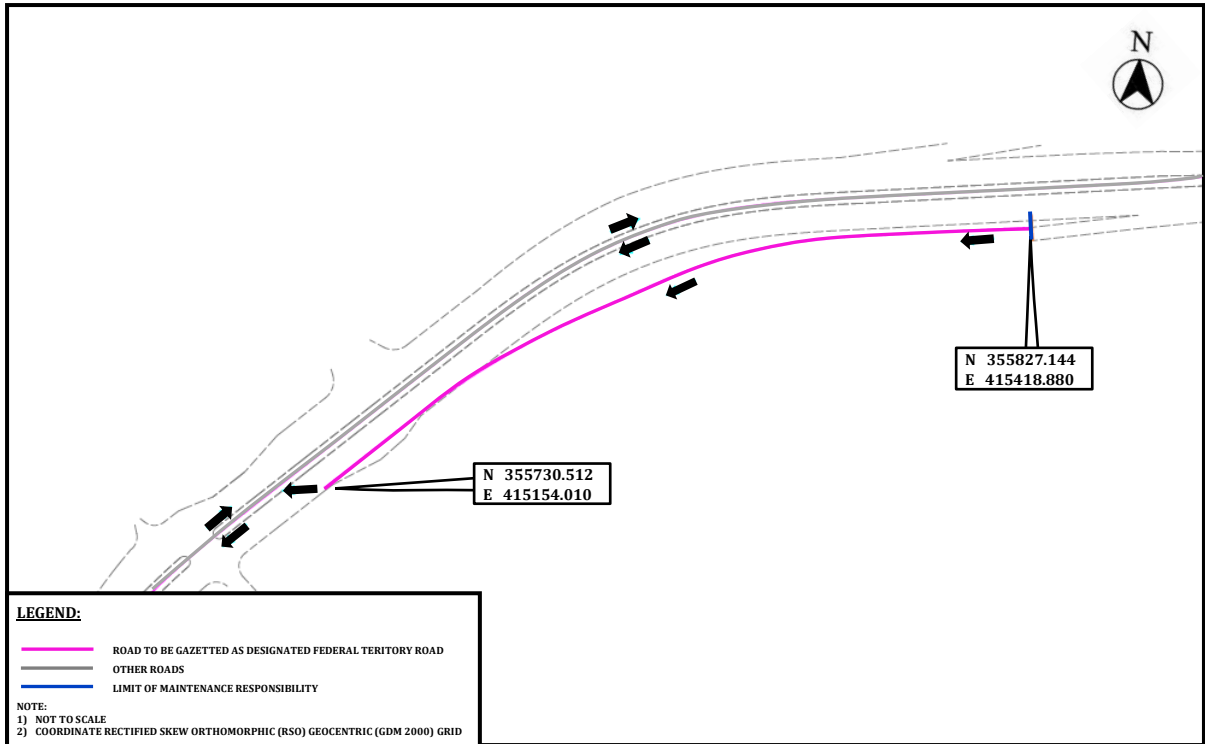
MAP 2 – SETIAWANGSA INTERCHANGE



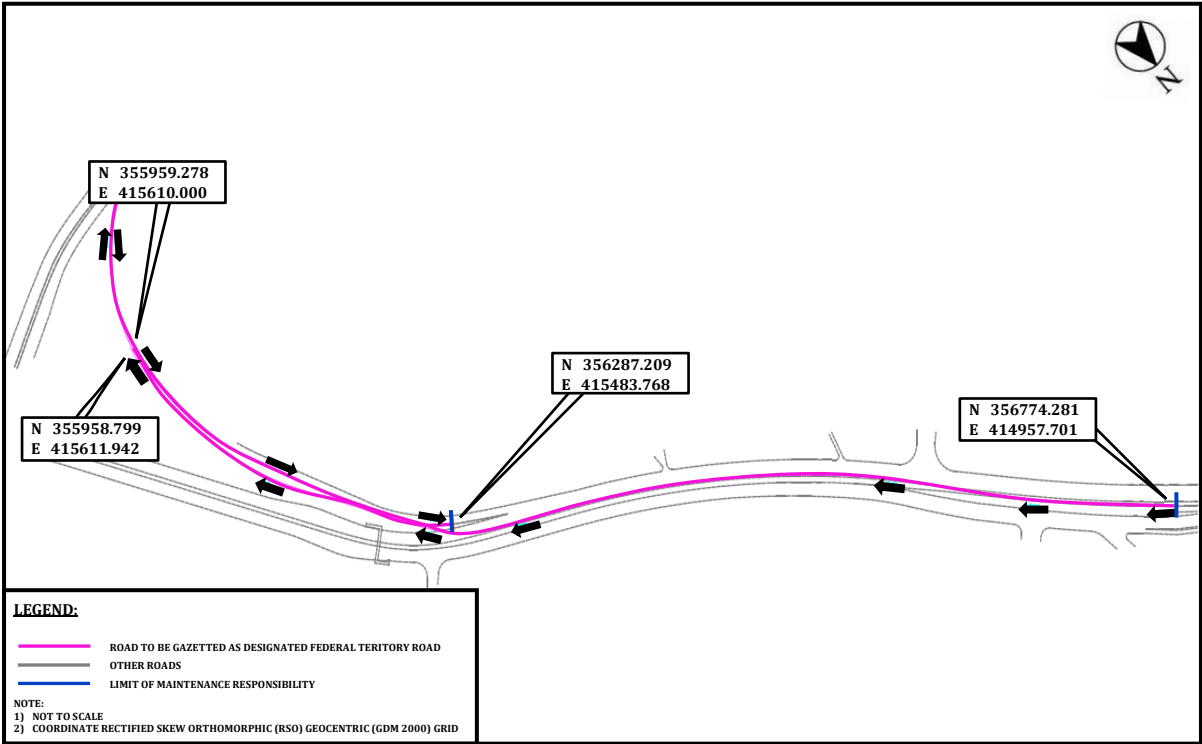
MAP 3 – GENTING KELANG INTERCHANGE



MAP 4 – GENTING KELANG ON RAMP



MAP 5 – TAMAN MELATI INTERCHANGE



Made 20 December 2021  
[KKR.PUU.110-1/6/; PN(PU2)460/Jld.110]

DATO' SRI HAJI FADILLAH BIN HAJI YUSOF  
*Senior Minister of Works*